



AMERICAN[®]
WHIRLPOOL

The Ultimate Hot Tub





AMERICAN[®]
WHIRLPOOL

The Ultimate Hot Tub

The Ultimate Hot Tub

Built to last a lifetime American Whirlpool[®] features the worlds first Steel frame - Appliance Grade[®] structure. For the ultimate relaxing and healing experience, American Whirlpool[®] also features the worlds

first medically designed jet massage systems called Zone Therapy[®]. Experience the exclusive features that make your new American Whirlpool[®] the ultimate hot tub.

| | |
|-----------------------------------|-------------------------|
| Dimensions..... | 64" X 81" /163 x 206 cm |
| Depth..... | 31" /79 cm |
| Seating Capacity..... | 3 |
| Water Capacity (gal/liters) | 186 gal /705 L |
| Weight (empty) | 605 lbs/274 kg |
| Weight (full) | 2,151 lbs/976 kg |
| Lounge..... | Yes |
| Illuminated Drink Holders..... | 3 |
| Illuminated Spa Controls..... | Yes |
| 3.5" Underwater Spa Light | Yes |

STANDARD UTILITY FEATURES

| | |
|--|-----|
| Programmable Filter Cycles | Yes |
| Steel Sub-Structure | Yes |
| DuraMAAX® Cabinetry..... | Yes |
| ABS Bottom Pan..... | Yes |
| Northern Exposure® Insulation..... | Yes |
| SmartTouch 2 Controls..... | Yes |
| Foot Relief Zone®..... | Yes |
| Performance Seating®..... | Yes |
| Head Cushions | 3 |
| Digital Color Optic Lighting (interior only) | Yes |
| Status Indicator Light..... | Yes |
| Stainless Steel Jets | Yes |

| | |
|--|-------------------------|
| Pump1 | 3.0Hp/6.0bHp, 230V, 2Sp |
| Pump1 (Export) | 3.0Hp/6.0bHp, 230V, 2Sp |
| Electrical Requirements (4-Wire)..... | 240/40A/50A |
| Export..... | 230V, 50Hz, 1x32A |
| Jet Total | 29 |

OPTIONAL FEATURES

| | |
|------------------------------|-----|
| CleanZone® System | Yes |
| Bluetooth Music System | Yes |
| WiFi Connectivity..... | Yes |



Specifications subject
to change
without prior notice.

| | |
|------------------------------------|-----------------------------|
| Dimensions..... | 78" X 78" / 198 cm x 198 cm |
| Depth | 35" / 89 cm |
| Seating Capacity..... | 4 |
| Water Capacity (gal./liters) | 259 gal / 980 L |
| Weight empty | 773 lbs / 351 kg |
| Weight full..... | 2,923 lbs / 1,326 kg |
| Illuminated Drink Holders..... | 3 |
| Illuminated Spa Controls..... | Yes |
| 3.5" Underwater Spa Light..... | Yes |

STANDARD UTILITY FEATURES

| | |
|--|-----|
| Programmable Filter Cycles | Yes |
| Steel Sub-Structure | Yes |
| DuraMAAX® Cabinetry..... | Yes |
| ABS Bottom Pan..... | Yes |
| Northern Exposure® Insulation..... | Yes |
| SmartTouch 2 Controls | Yes |
| Comfort Collar® | 2 |
| Head Cushions | 2 |
| Performance Seating® | Yes |
| Aurora Cascade Water Feature | 2 |
| Digital Color Optic Lighting (interior only) | Yes |
| Status Indicator Light..... | Yes |
| Stainless Steel Jets | Yes |

| | |
|--|-------------------------|
| Pump1 | 3.0Hp/6.0bHp, 230V, 2Sp |
| Pump2..... | 3.0Hp/6.0bHp, 230V, 2Sp |
| Pump1 (Export) | 3.0Hp/6.0bHp, 230V, 2Sp |
| Pump2(Export) | 3.0Hp/6.0bHp, 230V, 2Sp |
| Electrical Requirements (4-Wire)..... | 240/40A/60A |
| Export..... | 230V, 50Hz, 1x32A |
| Jet Total | 32 |

OPTIONAL FEATURES

| | |
|--|-----|
| AeroMAAX® Plus (10 air jets)..... | Yes |
| CleanZone® System..... | Yes |
| Clean Zone® Ultra (Dual Sanitization System) | Yes |
| Bluetooth Music System | Yes |
| Pedestal Lights | Yes |
| WiFi Connectivity..... | Yes |
| X-Series Collar | Yes |



Specifications subject
to change
without prior notice.

| | |
|------------------------------------|-------------------------|
| Dimensions | 78" X 78" /198 x 198 cm |
| Depth..... | 35" /89 cm |
| Seating Capacity..... | 4 |
| Water Capacity (gal./liters) | 255 gal /963 L |
| Weight (empty) | 773 lbs/351 kg |
| Weight (full) | 2,886 lbs/1,309 kg |
| Lounge..... | Yes |
| Illuminated Drink Holders | 2 |
| Illuminated Spa Controls | Yes |
| 3.5" Underwater Spa Light | Yes |

STANDARD UTILITY FEATURES

| | |
|--|-----|
| Programmable Filter Cycles | Yes |
| Steel Sub-Structure | Yes |
| DuraMAAX® Cabinetry..... | Yes |
| ABS Bottom Pan..... | Yes |
| Northern Exposure® Insulation..... | Yes |
| SmartTouch 2 Controls..... | Yes |
| Comfort Collar®..... | 1 |
| Head Cushions | 2 |
| Chromatherapy..... | Yes |
| Performance Seating®..... | Yes |
| Aurora Cascade Water Feature | 2 |
| Digital Color Optic Lighting (interior only) | Yes |
| Status Indicator Light..... | Yes |
| Stainless Steel Jets | Yes |

| | |
|--|-------------------------|
| Pump1 | 3.0Hp/6.0bHp, 230V, 2Sp |
| Pump2..... | 3.0Hp/6.0bHp, 230V, 2Sp |
| Pump1 (Export) | 3.0Hp/6.0bHp, 230V, 2Sp |
| Pump2(Export) | 3.0Hp/6.0bHp, 230V, 2Sp |
| Electrical Requirements (4-Wire)..... | 240/40A/60A |
| Export | 230V, 50Hz, 1x32A |
| Jet Total | 28 |

OPTIONAL FEATURES

| | |
|--|-----|
| AeroMAAX® Plus (10 air jets)..... | Yes |
| CleanZone® System..... | Yes |
| Clean Zone® Ultra (Dual Sanitization System) | Yes |
| Bluetooth Music System | Yes |
| Pedestal Lights | Yes |
| WiFi Connectivity..... | Yes |
| X-Series Collar | Yes |



Specifications subject
to change
without prior notice.

| | |
|------------------------------------|--------------------------|
| Dimensions..... | 88" X 88" / 224 x 224 cm |
| Depth..... | 35" / 89 cm |
| Seating Capacity..... | 6 |
| Water Capacity (gal./liters) | 296 gal /1,119 L |
| Weight (empty) | 918 lbs/416 kg |
| Weight (full) | 3,372 lbs/1,530 kg |
| Illuminated Drink Holders | 4 |
| Illuminated Spa Controls | Yes |
| 3.5" Underwater Spa Light | Yes |

STANDARD UTILITY FEATURES

| | |
|--|-----|
| Programmable Filter Cycles | Yes |
| Steel Sub-Structure | Yes |
| DuraMAAX® Cabinetry..... | Yes |
| ABS Bottom Pan..... | Yes |
| Northern Exposure® Insulation..... | Yes |
| SmartTouch 2 Controls..... | Yes |
| Comfort Collar®..... | 2 |
| Foot Dome | Yes |
| Zone Therapy® Seat..... | Yes |
| Shiatsu Seat | Yes |
| Head Cushions | 2 |
| Chromatherapy..... | Yes |
| Aurora Cascade Water Feature | 2 |
| Digital Color Optic Lighting (interior only) | Yes |
| Status Indicator Light..... | Yes |
| Stainless Steel Jets | Yes |

| | |
|--|-------------------------|
| Pump1 | 3.0Hp/6.0bHp, 230V, 2Sp |
| Pump2..... | 3.0Hp/6.0bHp, 230V, 2Sp |
| Pump1 (Export) | 3.0Hp/6.0bHp, 230V, 2Sp |
| Pump2(Export) | 3.0Hp/6.0bHp, 230V, 2Sp |
| Electrical Requirements (4-Wire)..... | 240/40A/60A |
| Export | 230V, 50Hz, 1x32A |
| Jet Total | 48 |

OPTIONAL FEATURES

| | |
|--|-----|
| AeroMAAX® Plus (10 air jets)..... | Yes |
| CleanZone® System..... | Yes |
| Clean Zone® Ultra (Dual Sanitization System) | Yes |
| Bluetooth Music System | Yes |
| Pedestal Lights | Yes |
| WiFi Connectivity..... | Yes |
| X-Series Collar | Yes |



Specifications subject
to change
without prior notice.

| | |
|------------------------------------|----------------------------|
| Dimensions..... | 88" X 88" /224 cm x 224 cm |
| Depth..... | 35" /89 cm |
| Seating Capacity..... | 6 |
| Water Capacity (gal./liters) | 347/1,314 |
| Weight (empty) | 820 lbs/372 kg |
| Weight (full) | 3,703 lbs/1,680 kg |
| Lounge..... | Yes |
| Illuminated Drink Holders | 4 |
| Illuminated Spa Controls | Yes |
| Molded Grab Bar | Yes |
| 3.5" Underwater Spa Light | Yes |

STANDARD UTILITY Features

| | |
|--|-----|
| Programmable Filter Cycles | Yes |
| Steel Sub-Structure | Yes |
| DuraMAAX® Cabinetry..... | Yes |
| Northern Exposure® Insulation..... | Yes |
| ABS Bottom Pan..... | Yes |
| SmartTouch 2 Controls..... | Yes |
| Foot Relief Zone® | Yes |
| Comfort Collar® | 2 |
| Zone Therapy® Seat..... | Yes |
| Shiatsu Seat | Yes |
| Head Cushions | 3 |
| ChromaTherapy | Yes |
| Aurora Cascade Water Feature | 2 |
| Digital Color Optic Lighting (interior only) | Yes |
| Status Indicator Light..... | Yes |
| Stainless Steel Jets | Yes |

| | |
|--|-------------------------|
| Pump1 | 3.0Hp/6.0bHp, 230V, 2Sp |
| Pump2..... | 3.0Hp/6.0bHp, 230V, 2Sp |
| Pump1 (Export) | 3.0Hp/6.0bHp, 230V, 2Sp |
| Pump2(Export) | 3.0Hp/6.0bHp, 230V, 2Sp |
| Electrical Requirements (4-Wire)..... | 240/40A/60A |
| Export | 230V, 50Hz, 1x32A |
| Jet Total | 49 |

OPTIONAL Features

| | |
|--|-----|
| AeroMAAX® Plus (10 air jets)..... | Yes |
| CleanZone® System..... | Yes |
| Clean Zone® Ultra (Dual Sanitization System) | Yes |
| Bluetooth Music System | Yes |
| Pedestal Lights | Yes |
| WiFi Connectivity..... | Yes |
| X-Series Collar | Yes |



Specifications subject
to change
without prior notice.

| | |
|------------------------------------|-----------------------------|
| Dimensions..... | 88" X 88" / 224 cm x 224 cm |
| Depth..... | 35" / 89 cm |
| Seating Capacity..... | 5 |
| Water Capacity (gal./liters) | 349 gal /1,320 L |
| Weight (empty) | 899 lbs/408 kg |
| Weight (full) | 3,794 lbs/1,721 kg |
| Lounges | 2 |
| Illuminated Drink Holders..... | 3 |
| Illuminated Spa Controls | Yes |
| Molded Grab Bars | Yes |
| 3.5" Underwater Spa Light | Yes |

STANDARD UTILITY FEATURES

| | |
|--|-----|
| Programmable Filter Cycles | Yes |
| Steel Sub-Structure | Yes |
| DuraMAAX® Cabinetry..... | Yes |
| ABS Bottom Pan..... | Yes |
| Northern Exposure® Insulation..... | Yes |
| SmartTouch 2 Controls..... | Yes |
| Foot Relief Zone® | Yes |
| Calf Zone..... | Yes |
| Comfort Collar®..... | 1 |
| Zone Therapy® Seat..... | Yes |
| Head Cushions | 3 |
| Chromatherapy..... | Yes |
| Aurora Cascade Water Feature | 2 |
| Digital Color Optic Lighting (interior only) | Yes |
| Status Indicator Light..... | Yes |
| Stainless Steel Jets | Yes |

| | |
|-------------------------|-------------------------|
| Pump1 | 3.0Hp/6.0bHp, 230V, 2Sp |
| Pump2..... | 3.0Hp/6.0bHp, 230V, 2Sp |
| Pump1 (Export) | 3.0Hp/6.0bHp, 230V, 2Sp |
| Pump2(Export) | 3.0Hp/6.0bHp, 230V, 2Sp |
| Electrical Requirements | |
| (4-Wire)..... | 240/40A/60A |
| Export | 230V, 50Hz, 1x32A |
| Jet Total | 47 |

OPTIONAL FEATURES

| | |
|--|-----|
| AeroMAAX® Plus (10 air jets)..... | Yes |
| CleanZone® System | Yes |
| Clean Zone® Ultra (Dual Sanitization System) | Yes |
| Bluetooth Music System | Yes |
| Pedestal Lights | Yes |
| WiFi Connectivity..... | Yes |
| X-Series Collar | Yes |



Specifications subject
to change
without prior notice.

| | |
|-----------------------------------|---------------------------------|
| Dimensions..... | 91.5" x 91.5" / 232 cm x 232 cm |
| Depth..... | 38" / 97 cm |
| Seating Capacity..... | 6 |
| Water Capacity (gal/liters) | 351 gal / 1,330 L |
| Weight (empty) | 972 lbs/441 kg |
| Weight (full) | 3,889lbs/1,764 kg |
| Lounges | 1 |
| Illuminated Drink Holders..... | 5 |
| Illuminated Spa Controls | Yes |
| 3.5" Underwater Light | Yes |

STANDARD UTILITY FEATURES

| | |
|--|-----|
| Programmable Filter Cycles | Yes |
| Steel Sub-Structure | Yes |
| DuraMAAX® Cabinetry..... | Yes |
| Northern Exposure® Insulation..... | Yes |
| ABS Bottom Pan..... | Yes |
| SmartTouch 2 Controls..... | Yes |
| Comfort Collar® | 2 |
| Foot Dome | Yes |
| Zone Therapy® Seat..... | Yes |
| Shiatsu Seat | Yes |
| Head Cushions | 2 |
| ChromaTherapy | Yes |
| Illuminated Waterfall Feature..... | 2 |
| Digital Color Optic Lighting (interior only) | Yes |
| Status Indicator Light..... | Yes |
| Stainless Steel Jets | Yes |

| | |
|-------------------------|-------------------------|
| Pump1 | 3.0Hp/6.0bHp, 230V, 2Sp |
| Pump2 | 3.0Hp/6.0bHp, 230V, 2Sp |
| Pump1 (Export) | 3.0Hp/6.0bHp, 230V, 2Sp |
| Pump2 (Export) | 3.0Hp/6.0bHp, 230V, 2Sp |
| Electrical Requirements | |
| (4-Wire)..... | 240/40A/60A |
| Export | 230V, 50Hz, 1x32A |
| Jet Total | 53 |

OPTIONAL FEATURES

| | |
|--|-----|
| AeroMAAX® Plus (10 air jets)..... | Yes |
| CleanZone® System | Yes |
| Clean Zone® Ultra (Dual Sanitization System) | Yes |
| Bluetooth Music System | Yes |
| Pedestal Lights | Yes |
| WiFi Connectivity | Yes |
| X-Series Collar | Yes |



Specifications subject
to change
without prior notice.

| | |
|-----------------------------------|--------------------------------|
| Dimensions..... | 91.5" x 91.5" /232 cm x 232 cm |
| Depth..... | 38" /97 cm |
| Seating Capacity..... | 6 |
| Water Capacity (gal/liters) | 417 gal /1,580 L |
| Weight (empty) | 938 lbs/425 kg |
| Weight (full) | 4,403 lbs/1,997 kg |
| Lounge..... | Yes |
| Illuminated Drink Holders..... | 3 |
| Illuminated Spa Controls | Yes |
| 3.5" Underwater Spa Light..... | Yes |

STANDARD UTILITY FEATURES

| | |
|--|-----|
| Programmable Filter Cycles | Yes |
| Steel Sub-Structure | Yes |
| DuraMAAX® Cabinetry..... | Yes |
| Northern Exposure® Insulation..... | Yes |
| ABS Bottom Pan..... | Yes |
| SmartTouch 2 Controls..... | Yes |
| Foot Relief Zone® | Yes |
| Comfort Collar® | 2 |
| Zone Therapy® Seat..... | Yes |
| Shiatsu Seat | Yes |
| Head Cushions | 3 |
| ChromaTherapy | Yes |
| Aurora Cascade Water Feature | 2 |
| Digital Color Optic Lighting (interior only) | Yes |
| Status Indicator Light..... | Yes |
| Stainless Steel Jets | Yes |

| | |
|-------------------------|-------------------------|
| Pump1 | 3.0Hp/6.0bHp, 230V, 2Sp |
| Pump2..... | 3.0Hp/6.0bHp, 230V, 2Sp |
| Pump1 (Export) | 3.0Hp/6.0bHp, 230V, 2Sp |
| Pump2(Export) | 3.0Hp/6.0bHp, 230V, 2Sp |
| Electrical Requirements | |
| (4-Wire)..... | 240/40A/60A |
| Export | 230V, 50Hz, 1x32A |
| Jet Total | 52 |

OPTIONAL FEATURES

| | |
|--|-----|
| AeroMAAX® Plus (10 air jets)..... | Yes |
| CleanZone® System | Yes |
| Clean Zone® Ultra (Dual Sanitization System) | Yes |
| Bluetooth Music System | Yes |
| Pedestal Lights | Yes |
| WiFi Connectivity..... | Yes |
| X-Series Collar | Yes |



Specifications subject
to change
without prior notice.

| | |
|-----------------------------------|-----------------------------|
| Dimensions..... | 92" x 92" / 234 cm x 234 cm |
| Depth..... | 38" / 97 cm |
| Seating Capacity..... | 6 |
| Water Capacity (gal/liters) | 415 gal /1,572 L |
| Weight (empty) | 1,050 lbs/476 kg |
| Weight (full) | 4,497 lbs/2,040 kg |
| Lounge..... | Yes |
| Illuminated Drink Holders..... | 4 |
| Illuminated Spa Controls | Yes |
| 3.5" Underwater Spa Light..... | Yes |

STANDARD UTILITY FEATURES

| | |
|--|-----|
| Programmable Filter Cycles | Yes |
| Steel Sub-Structure | Yes |
| DuraMAAX® Cabinetry..... | Yes |
| Northern Exposure® Insulation..... | Yes |
| ABS Bottom Pan..... | Yes |
| SmartTouch 2 Controls..... | Yes |
| Comfort Collar® | 1 |
| Foot Dome | Yes |
| Zone Therapy® Seat..... | Yes |
| Head Cushions | 4 |
| Illuminated Waterfall Feature..... | 2 |
| Aurora Cascade Water Feature | 2 |
| Digital Color Optic Lighting (interior only) | Yes |
| Status Indicator Light..... | Yes |
| Stainless Steel Jets | Yes |

| | |
|-------------------------|-------------------------|
| Pump1 | 3.0Hp/6.0bHp, 240V, 2Sp |
| Pump2..... | 3.0Hp/6.0bHp, 240V, 2Sp |
| Pump3..... | 3.0Hp/6.0bHp, 240V, 1Sp |
| Pump1 (Export) | 3.0Hp/6.0bHp, 230V, 2Sp |
| Pump2 (Export) | 3.0Hp/6.0bHp, 230V, 2Sp |
| Pump3 (Export) | 3.0Hp/6.0bHp, 230V, 1Sp |
| Electrical Requirements | |
| (4-Wire)..... | 240/50A/60A |
| Export | 230V, 50Hz, 1x35A |
| Jet Total | 75 |

OPTIONAL FEATURES

| | |
|--|-----|
| CleanZone® System | Yes |
| Clean Zone® Ultra (Dual Sanitization System) | Yes |
| Bluetooth Music System | Yes |
| WiFi Connectivity | Yes |



Specifications subject
to change
without prior notice.

890

| | |
|-----------------------------------|-----------------------------|
| Dimensions..... | 100" x 92" /254 cm x 234 cm |
| Depth..... | 38" /97 cm |
| Seating Capacity..... | 6 |
| Water Capacity (gal/liters) | 470 gal /1,779 L |
| Weight (empty) | 1,219 lbs/553 kg |
| Weight (full) | 5,120 lbs/2,322 kg |
| Illuminated Drink Holders..... | 3 |
| Illuminated Spa Controls | Yes |
| 3.5" Underwater Spa Light | Yes |

STANDARD UTILITY FEATURES

| | |
|--|-----|
| Programmable Filter Cycles | Yes |
| Steel Sub-Structure | Yes |
| DuraMAAX® Cabinetry..... | Yes |
| Northern Exposure® Insulation..... | Yes |
| ABS Bottom Pan..... | Yes |
| SmartTouch 2 Controls..... | Yes |
| Comfort Collar®..... | 1 |
| Illuminated Waterfall Feature..... | 1 |
| Aurora Cascade Water Feature | 2 |
| Foot Dome | Yes |
| Zone Therapy® Seat..... | Yes |
| Head Cushions | 4 |
| Ice Bucket | Yes |
| Digital Color Optic Lighting (interior only) | Yes |
| Status Indicator Light..... | Yes |
| Stainless Steel Jets | Yes |

| | |
|--|-------------------------|
| Pump1 | 3.0Hp/6.0bHp, 240V, 2Sp |
| Pump2 | 3.0Hp/6.0bHp, 240V, 2Sp |
| Pump3..... | 3.0Hp/6.0bHp, 240V, 1Sp |
| Pump1 (Export) | 3.0Hp/6.0bHp, 230V, 2Sp |
| Pump2 (Export) | 3.0Hp/6.0bHp, 230V, 2Sp |
| Pump3 (Export) | 3.0Hp/6.0bHp, 230V, 1Sp |
| Electrical Requirements (4-Wire)..... | 240/50A/60A |
| Export | 230V, 50Hz, 1x35A |
| Jet Total | 78 |

OPTIONAL FEATURES

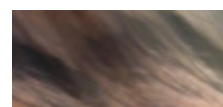
| | |
|--|-----|
| CleanZone® System | Yes |
| Clean Zone® Ultra (Dual Sanitization System) | Yes |
| Bluetooth Music System | Yes |
| WiFi Connectivity..... | Yes |

890 Acrylic Colors

Sterling Silver



Tuscan Sun



Midnight Canyon



Specifications subject
to change
without prior notice.

| | |
|-----------------------------------|-----------------------------|
| Dimensions..... | 91" X 133" /231 cm x 338 cm |
| Depth..... | 38" /97 cm |
| Seating Capacity..... | 8-10 |
| Water Capacity (gal/liters) | 689 gal /2,609 L |
| Weight (empty) | 1,448 lbs/657 kg |
| Weight (full) | 7,375 lbs/3,345 kg |
| Lounges | 2 |
| Illuminated Drink Holders..... | 4 |
| Illuminated Spa Controls | Yes |
| 3.5" Underwater Spa Light..... | Yes |

STANDARD UTILITY FEATURES

| | |
|------------------------------------|-----|
| Programmable Filter Cycles | Yes |
| Steel Sub-Structure | Yes |
| DuraMAAX® Cabinetry | Yes |
| Northern Exposure® Insulation..... | Yes |

| | |
|--|-------------------------|
| ABS Bottom Pan..... | Yes |
| SmartTouch 2 Controls..... | Yes |
| Comfort Collar®..... | 1 |
| Foot Dome | Yes |
| Zone Therapy® Seat..... | Yes |
| Head Cushions | 4 |
| Love Seat | Yes |
| Illuminated Water Feature..... | 2 |
| Digital Color Optic Lighting (interior only) | Yes |
| Status Indicator Light..... | Yes |
| Stainless Steel Jets | Yes |
| Pump1 | 3.0Hp/6.0bHp, 240V, 2Sp |
| Pump 2..... | 3.0Hp/6.0bHp, 240V, 2Sp |
| Pump 3 | 3.0Hp/6.0bHp, 240V, 1Sp |
| Pump 4..... | 3.0Hp/6.0bHp, 240V, 1Sp |

| | |
|-------------------------------|-------------------------|
| Pump1 (Export) | 2.0Hp/4.0bHp, 230V, 2Sp |
| Pump2 (Export) | 2.0Hp/4.0bHp, 230V, 2Sp |
| Pump3 (Export) | 2.0Hp/4.0bHp, 230V, 1Sp |
| Pump4 (Export) | 2.0Hp/4.0bHp, 230V, 1Sp |
| Electrical Requirements | |
| (4-Wire)..... | 240/60A |
| Export | 230V, 50Hz, 1x35A |
| Jet Total | 84 |

OPTIONAL FEATURES

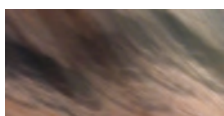
| | |
|--|-----|
| CleanZone® System..... | Yes |
| Clean Zone® Ultra (Dual Sanitization System) | Yes |
| Bluetooth Music System | Yes |
| WiFi Connectivity..... | Yes |
| Exercise Kit..... | Yes |
| Pneumatic Power Oars..... | Yes |
| X-Series Collar | Yes |

982 Acrylic Colors Available

Sterling Silver



Tuscan Sun



Midnight Canyon



Specifications subject to change without prior notice.

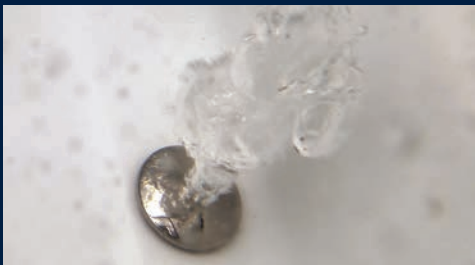


Medically Designed Massage

Your AMERICAN WHIRLPOOL® hot tub features the worlds first Medically designed jetting systems for the ultimate massage. Whether it's diminishing the stresses of everyday life, relieving stiff muscles or simply helping you get a good night's sleep - medically designed Zone Therapy® utilizes correctly positioned jets to target pain zone trigger points. Precisely locating the correct size jet and massaging action where they are most effective is key to relieving pain and stiffness throughout the entire body.

AeroMAAX®

AeroMAAX® strategically places air injectors throughout the spa. This gentler massage promotes blood flow and "vacillation," the awakening of smaller blood vessels through the body. The effect is mild vibration in the spa, to soothe, refresh and heat.



TheraMAAX® Jets

The exclusive TheraMAAX® Jets utilize a scientifically designed grill surrounding the nozzle of the jet to reduce drag and cohesion of the jet stream. The three spoke stainless steel escutcheon makes it easy to adjust the power of the jet.



Comfort Collar®



A neck massage therapy system is one of the most relaxing features in a spa. The molded Comfort Collar's unique cushion supports your neck, while the jets massage neck and shoulder muscles. The Comfort Collar® is like having your neck massaged by a loved one. This hallmark feature is one of the reasons many have already chosen an AMERICAN WHIRLPOOL® hot tub.

X-Series Collar

The convenient X-series option replaces the Comfort Collar® and increases the seat size in the deep corner seat for physical freedom of movement and enhanced comfort for those who need it.



Ultimate Comfort

For over 40 years we have designed the worlds most comfortable hot tubs thanks to patented features like the zero gravity Performance Seat®. Seats are specifically molded to fit a variety of shapes and sizes so you can find the one that's right for you. Deep immersion seating provides ultimate comfort, while armrests and Foot Relief Zones® seem to mold to your body.



Performance Seating®

Performance Seating® means AMERICAN WHIRLPOOL® has the most comfortable spas in the industry. Each seat is designed to provide full body immersion and proper posture, in harmony with their respective jetting pattern, for comfort, superior jet performance and reducing stress on your lower back.



SmartTouch Control

Intuitive SmartTouch control panels are easy to read with animation allowing you to control the hot tub with the tap of your finger. Unlike your smart devices this control works great when wet. Combined with Powerworks® and fully electronic pumps makes it the most advanced hot tubs in the world.

AMERICAN WHIRLPOOL® hot tubs utilize Direct Drive 56 frame pumps in all of their 240 volt models. These are larger, and more powerful motors that eliminates mechanical switches allowing the pumps to run cooler for a longer and more energy efficient life.



Wifi Connectivity

AMERICAN WHIRLPOOL® hot tubs now put your spa's controls in the palm of your hand. Simply download the free app, sync to your home's WiFi system and enjoy complete control anywhere in the world.





Bluetooth Music

State of the art bluetooth technology puts the music at your fingertips. Enjoy your favorite artists and playlists anytime with this easy to use stereo system. Simply sync any bluetooth compatible device and as you slip in to the soothing waters enjoy your favorite artists.

Two fully integrated speakers provide crisp clear fidelity for your listening enjoyment.

When you choose the AMERICAN WHIRLPOOL® Sound System, sound will resonate through the water from the powerful subwoofer, which is integrated directly into your spa's structure. The technology allows you to not only hear, but also feel your music.



Subwoofer

Crystal Clear Water

Perfect moments deserve perfect, crystal clear water. The water maintenance of your spa is made easy by the exclusive features of AMERICAN WHIRLPOOL's complete 4 step cleaning system and dual sanitization.



4 Step Filtration System

- 1. Weir Door** - Breaks the water surface tension and traps debris.
- 2. First Filter** - Removes oil and ultra fine particulates up to 10 microns.
- 3. Basket** - Captures debris before filtering for easy removal.
- 4. Spa Filter** - Oversized filter permits the high flow 1000gpm intake of water to be cleaned and returned into the spa.

CleanZone®

The CleanZone® water purification system will automatically maintain healthy, crystal clear water while greatly reducing chemical maintenance. CleanZone® is a cartridge oxidizer that generates oxygen and cleans your spa water.



CleanZone® Ultra

The CleanZone® Ultra system uses the power of UVC light, the same technology utilized in many communities around the world to purify drinking water. CleanZone® Ultra kills 99.9% of micro-organisms, bacteria, viruses and parasites. This system is the perfect blend of hygiene, purity and technology.



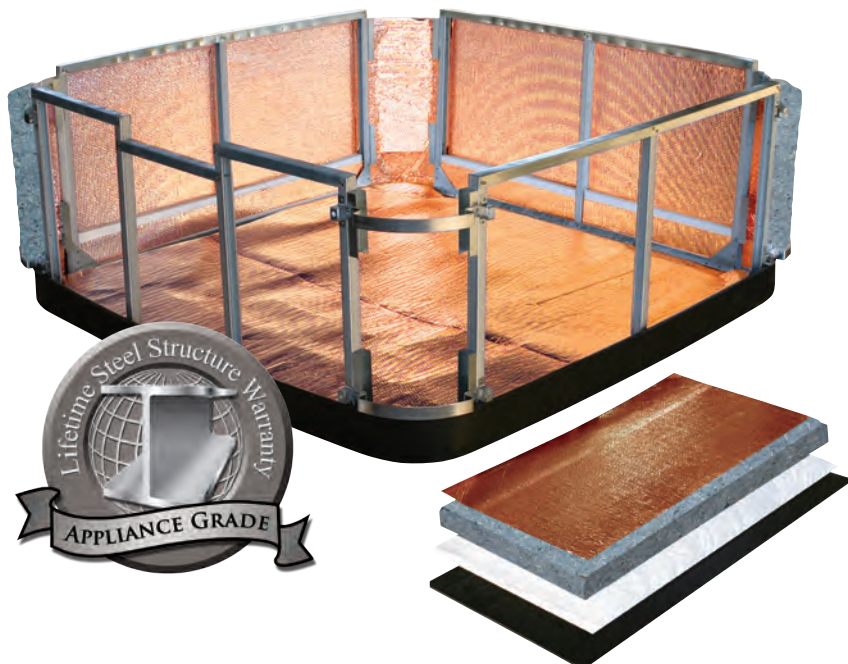
Steel Frame Appliance Grade Structure

AMERICAN WHIRLPOOL® hot tubs are the worlds first steel frame Appliance Grade® hot tubs. The steel frame provides greater structural integrity than wood, as well as superior corrosion protection for a much longer life. Unlike wood It will never rot, warp, or crack. Stronger, more durable, and ideal for the environment - it's the reason AMERICAN WHIRLPOOL® is the ultimate hot tub. The steel frame and Northern Exposure® Insulation allow for complete service of the entire structure and all mechanical parts. Essentially the spa can be serviced to factory specifications right in your backyard, for the lifetime you own it. The hot tub is built to the same service and safety standards as other home appliances.



Lifetime Steel Structure Warranty

The steel frame is the backbone and support for the entire spa. The steel structure of your AMERICAN WHIRLPOOL® hot tub carries a lifetime warranty.



ABS Sealed Base

The ABS Sealed Base is an integral part of the support structure in an AMERICAN WHIRLPOOL® hot tub. Its one-piece construction provides a rugged foundation that seals the bottom of the spa, locking in heat and sealing out moisture.

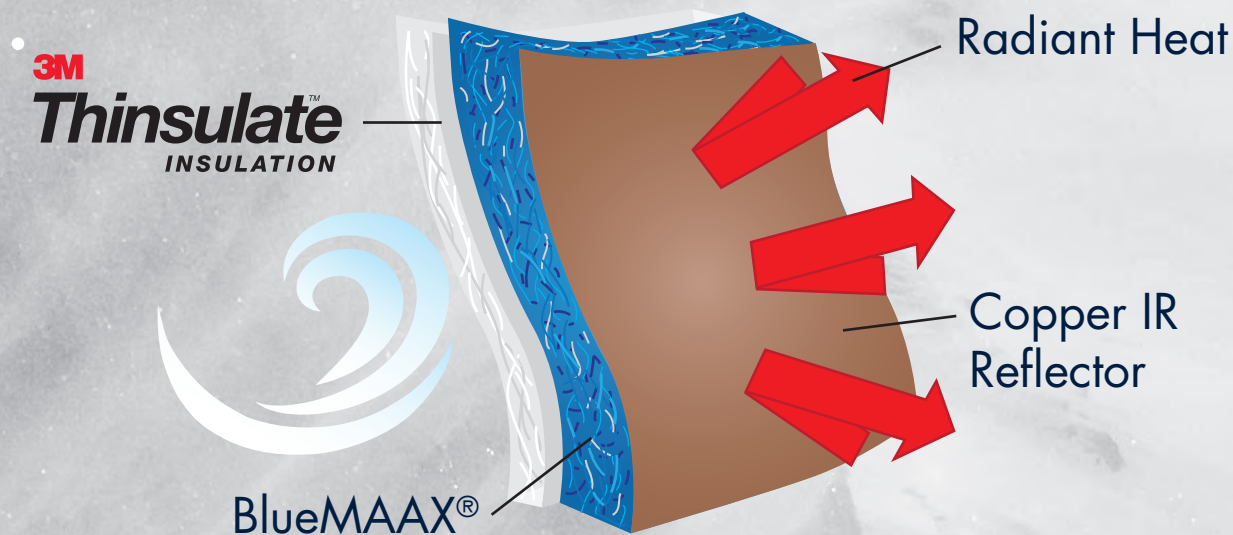
Service

Conventional foam-filled hot tubs are extremely hard to service and are often damaged in the process. It is very costly to bring these back to factory specifications.



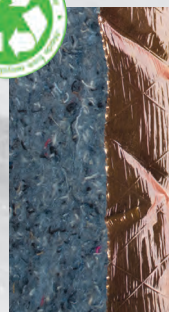


Northern Exposure® is the ultimate hot tub insulation system. This patent pending thermal barrier technology recycles the free heat energy for more efficient heating and lower energy costs. All four sides of the spa, plus the floor and cover are lined with reflective copper material to reflect radiant heat energy generated from the pumps back into the spa. Heat is absorbed back into the plumbing helping raise and maintain water temperature. Finally the entire exterior of the hot tub is wrapped in 3M Thinsulate® Insulation, the same incredible material utilized in winter clothing. This three layer patent pending system ensures energy created by the spa stays in the spa.



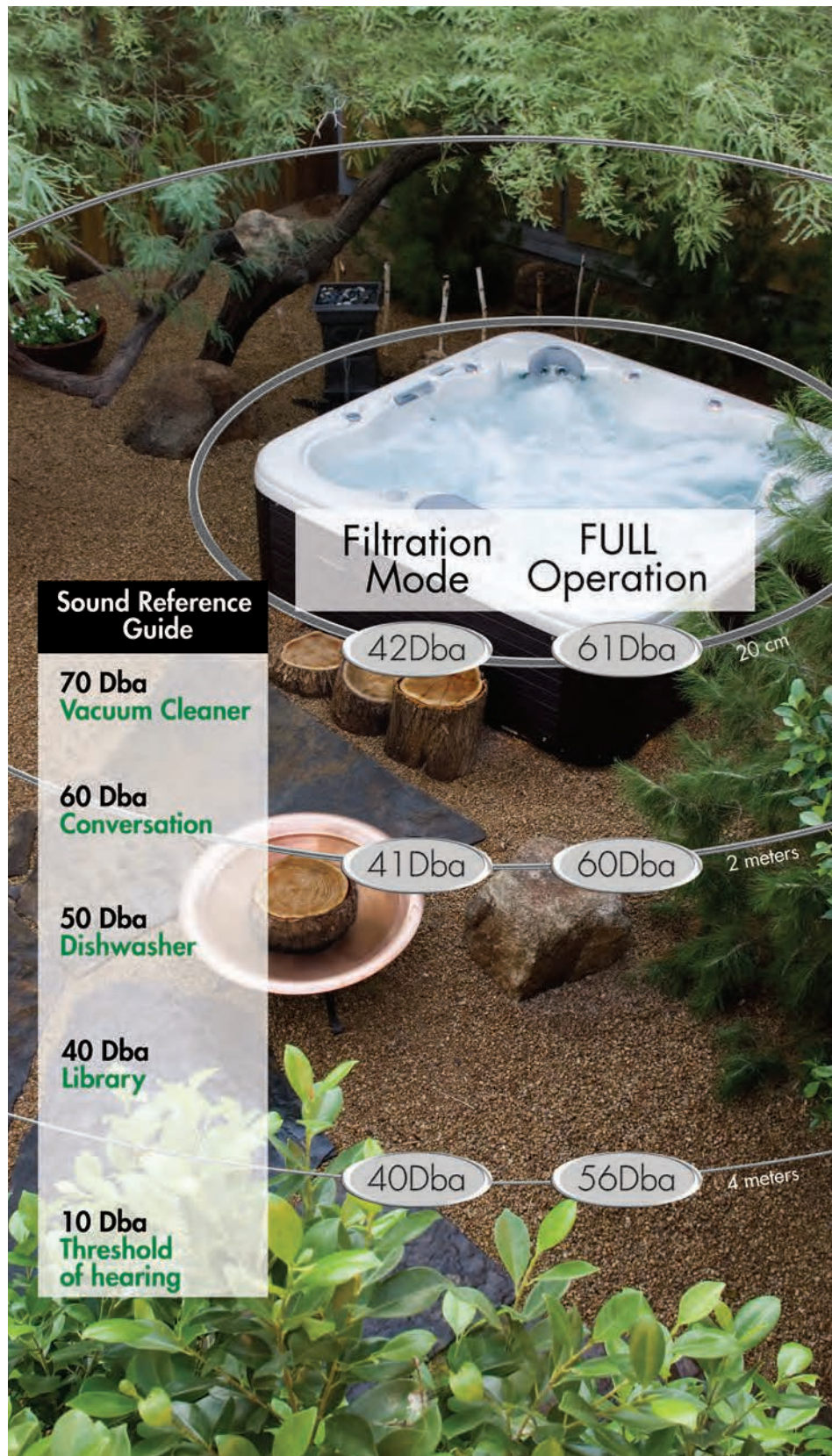
BlueMAAX®

The Northern Exposure® Insulation System features our eco-friendly BlueMAAX® insulation. Made from recycled natural fiber, it is approved by the U.S. Green Building Council. The insulation contains no chemical irritants, is treated with a borate based solution to prevent mold/mildew growth, pest infestation, and acts as a fire retardant. BlueMAAX® replaces the urethane foam in "foam filled" hot tubs. (Foam filling produces volatile organic compounds (VOC's) which are harmful to the environment.)



Ultra Quiet

The same insulation that makes an AMERICAN WHIRLPOOL® hot tub energy efficient also aids in it's ultra quiet operation. Sound energy is trapped and deadened inside the hot tub by the insulation sound barrier. Quiet operation is essential to ensure a peaceful relaxing experience throughout the entire backyard.



Insulating Cover

AMERICAN WHIRLPOOL's premium grade insulating covers contain a unique copper lining, removable heat sealing pillows to vent excess heat off in the summer and a tailored fit to keep the heat in when cooler. The cover also acts as an important safety barrier to the spa.



Lifetime Insulation Warranty

The insulation system in your new AMERICAN WHIRLPOOL® hot tub is warranted to maintain the same insulation value as it had at the time it was manufactured. The high R value, Appliance Grade® construction will allow a technician to service the entire spa and bring it back to factory specifications at home.

Set The Mood

Your American whirlpool hot tub is available with a beautiful variety of water and light features. From the laminar water fountains to the Chromotherapy underwater lighting system, everything you need for the perfect scene is available with the touch of a button. Set the color for the perfect mood or turn on the soothing water cascade to help you drift off and forget the stress of the day.



Illuminated Ergonomic Massage Controller

The Ergonomic Massage Controller is illuminated to work in harmony with the other lighting options. It provides an ergonomic grip for easy adjustment of the jet pressure.



Illuminated Drink Holders

The illuminated drink holders turn even water into a visual piece of art that makes any evening special.

Continuous Cast Acrylic

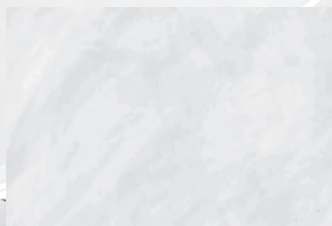
Every AMERICAN WHIRLPOOL® hot tub has an attractive interior finish made from continuous cast acrylic. This is superior to Ethylene "soft plastic" surfaces. The hard, non-porous surface resists stains, fading, scratches and chemical abuse. With the look of granite, pearl or metalescence, the extremely rugged and durable finish offers beauty and peace of mind.

Acrylic Colors

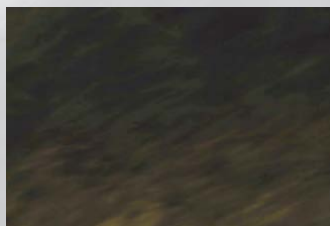
Glacier Mountain



Silver Marble



Midnight Canyon



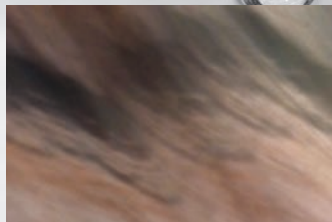
Smokey Mountain



Storm Clouds



Tuscan Sun



Majestic Sky



Sahara



DuraMAAX® Siding

DuraMAAX® is a state of the art wood-alternative material that has the look and feel of natural wood, without the maintenance. The material is impact resistant, impervious to weather or insect damage and will never splinter, crack or rot. The attractive exterior locks in heat and seals out cold air providing a beautiful look and feel



Cabinet Colors

Resort Gray



Modern Mocha



Pecan Ridge



100

**STRUCTURAL FEATURES**

| | |
|-----------------------------------|----------------------|
| Dimensions..... | 76" /193 cm Diameter |
| Depth..... | 36" /91 cm |
| Seating Capacity..... | 4 |
| Water Capacity (gal/liters) | 200 gal/757 ltr |
| Weight (empty) | 620 lbs /281 kg |
| Weight (full) | 2,277 lbs /1,033 kg |
| 3.5" Underwater Spa Light | Yes |

STANDARD UTILITY FEATURES

| | |
|----------------------------------|-------------------------|
| Programmable Filter Cycles | Yes |
| Treated Wooden Frame | Yes |
| DuraMAAX® Cabinetry | Yes |
| Thermo-Lock® Insulation | Yes |
| HDPE Sealed Base | Yes |
| Stainless Steel Jets | Yes |
| Dynamic LED Lighting | Yes |
| Pump1 | 1.5Hp/3.0bHp, 115V, 2Sp |
| Pump1 (Export) | 2.0Hp/4.0bHp, 230V, 2Sp |
| Electrical Requirements | |
| (4-Wire)..... | 240V/30A/40A |
| (3-Wire)..... | 120V/15A/30A |
| Export | 230V, 50 Hz, 1x10A |
| Jet Total | 18 |

OPTIONAL FEATURES

| | |
|-------------------------|-----|
| CleanZone® System | Yes |
|-------------------------|-----|

Dealer Installed Option:

| | |
|-----------------|-----------|
| GFCI Cord | 15ft, 15A |
|-----------------|-----------|

151

**STRUCTURAL FEATURES**

| | |
|-----------------------------------|-----------------------------|
| Dimensions..... | 83" x 63" / 211 cm x 160 cm |
| Depth..... | 30" /76 cm |
| Seating Capacity..... | 3 |
| Water Capacity (gal/liters) | 193 gal/731 ltr |
| Weight (empty) | 680 lbs /308 kg |
| Weight (full) | 2,280 lbs /1,034 kg |
| Waterfall | Yes |
| 3.5" Underwater Spa Light | Yes |

STANDARD UTILITY FEATURES

| | |
|----------------------------------|-------------------------|
| Programmable Filter Cycles | Yes |
| Treated Wooden Frame | Yes |
| DuraMAAX® Cabinetry | Yes |
| Thermo-Lock® Insulation | Yes |
| HDPE Sealed Base | Yes |
| Stainless Steel Jets | Yes |
| Dynamic LED Lighting | Yes |
| Pump1 | 1.5Hp/3.0bHp, 115V, 2Sp |
| Pump1 (Export) | 2.0Hp/4.0bHp, 230V, 2Sp |
| Electrical Requirements | |
| (4-Wire)..... | 240V/30A/40A |
| (3-Wire)..... | 120V/15A/30A |
| Export | 230V, 50 Hz, 1x10A |
| Jet Total | 20 |

OPTIONAL FEATURES

| | |
|-------------------------|-----|
| CleanZone® System | Yes |
|-------------------------|-----|

Dealer Installed Option:

| | |
|-----------------|-----------|
| GFCI Cord | 15ft, 15A |
|-----------------|-----------|

160



STRUCTURAL FEATURES

Dimensions..... 71" x 71" /180 cm x 180 cm
 Depth..... 35"/89 cm
 Seating Capacity..... 4
 Water Capacity (gal/liters) 229 gal/867 ltr
 Weight (empty) 653 lbs /296 kg
 Weight (full) 2,556 lbs /1,159 kg
 3.5" Underwater Spa Light Yes

STANDARD UTILITY FEATURES

Programmable Filter Cycles Yes
 Treated Wooden Frame Yes
 DuraMAAX® Cabinetry Yes
 Thermo-Lock® Insulation Yes
 HDPE Sealed Base Yes
 Stainless Steel Jets Yes
 Dynamic LED Lighting Yes
 Pump1 1.5Hp/3.0bHp, 115V, 2Sp
 Pump1 (Export) 2.0Hp/4.0bHp, 230V, 2Sp
 Electrical Requirements
 (4-Wire) 240V/30A/40A
 (3-Wire) 120V/15A/30A
 Export 230V, 50 Hz, 1x10A
 Jet Total 16

OPTIONAL FEATURES

CleanZone® System Yes
Dealer Installed Option:
 GFCI Cord 15ft, 15A

171



STRUCTURAL FEATURES

Dimensions..... 83" x 83" /211 cm x 211 cm
 Depth..... 35"/89 cm
 Seating Capacity..... 5-6
 Water Capacity (gal/liters) 336 gal/1,272 ltr
 Weight (empty) 893 lbs /405 kg
 Weight (full) 3,679 lbs /1,669 kg
 Lounge..... Yes
 Waterfall Yes
 3.5" Underwater Spa Light Yes

STANDARD UTILITY FEATURES

Programmable Filter Cycles Yes
 Treated Wooden Frame Yes
 DuraMAAX® Cabinetry Yes
 Thermo-Lock® Insulation Yes
 HDPE Sealed Base Yes
 Stainless Steel Jets Yes
 Dynamic LED Lighting Yes
 Pump1 2.5Hp/5.0bHp, 240V, 2Sp
 Pump 2 2.5Hp/5.0bHp, 240V, 2Sp
 Pump1 (Export) 2.0Hp/4.0bHp, 230V, 2Sp
 Pump2 (Export) 2.0Hp/4.0bHp, 230V, 2Sp
 Electrical Requirements
 (4-Wire) 240V/40A/60A
 Export 230V, 50 Hz, 1x25A
 Jet Total 40

OPTIONAL FEATURES

CleanZone® System Yes

Specifications subject to change without prior notice.

250

**STRUCTURAL FEATURES**

| | |
|------------------------------------|-----------------------------|
| Dimensions | 63" X 83" / 160 cm x 211 cm |
| Depth | 33" / 84 cm |
| Seating Capacity | 4 |
| Water Capacity (gal./liters) | 242 gal / 916 ltr |
| Weight (empty) | 707 lbs / 321 kg |
| Weight (full) | 2,718 lbs / 1,233 kg |
| Drink Holders | 1 |
| Pillows | 2 |
| 3.5" Underwater Spa Light | Yes |

STANDARD UTILITY FEATURES

| | |
|---|-------------------------|
| Programmable Filter Cycles | Yes |
| Hybrid Sub-Structure | Yes |
| DuraMAAX® Cabinetry | Yes |
| Thermo-Lock® Insulation | Yes |
| Molded Bottom Pan | Yes |
| Stainless Steel Jets | Yes |
| Dynamic LED Lighting | Yes |
| Aurora Cascade Water Feature | 2 |
| Pump 1 | 3.0Hp/6.0bHp, 240V, 2Sp |
| Pump 1 (Export) | 3.0Hp/6.0bHp, 230V, 2Sp |
| Electrical Requirements (4-Wire) | 240V/40A/50A |
| Export | 230V, 50 Hz, 1x15A |
| Jet Total | 23 |

OPTIONAL FEATURES

| | |
|------------------------------|-----|
| CleanZone® System | Yes |
| Bluetooth Music System | Yes |
| WiFi Connectivity | Yes |

Dealer Installed Option:

| | |
|------------------------------|-----|
| Aqua Klean® Filtration | Yes |
|------------------------------|-----|

261

**STRUCTURAL FEATURES**

| | |
|------------------------------------|-----------------------------|
| Dimensions | 72" X 72" / 183 cm x 183 cm |
| Depth | 33" / 84 cm |
| Seating Capacity | 2-3 |
| Water Capacity (gal./liters) | 198 gal / 750 ltr |
| Weight (empty) | 648 lbs / 294 kg |
| Weight (full) | 2,292 lbs / 1,040 kg |
| Drink Holders | 2 |
| Pillows | 2 |
| 3.5" Underwater Spa Light | Yes |

STANDARD UTILITY FEATURES

| | |
|---|-------------------------|
| Programmable Filter Cycles | Yes |
| Hybrid Sub-Structure | Yes |
| DuraMAAX® Cabinetry | Yes |
| Thermo-Lock® Insulation | Yes |
| Molded Bottom Pan | Yes |
| Stainless Steel Jets | Yes |
| Dynamic LED Lighting | Yes |
| Aurora Cascade Water Feature | 2 |
| Pump 1 | 3.0Hp/6.0bHp, 240V, 2Sp |
| Pump 1 (Export) | 3.0Hp/6.0bHp, 230V, 2Sp |
| Electrical Requirements (4-Wire) | 240V/40A/50A |
| Export | 230V, 50 Hz, 1x15A |
| Jet Total | 24 |

OPTIONAL FEATURES

| | |
|------------------------------|-----|
| CleanZone® System | Yes |
| Bluetooth Music System | Yes |
| WiFi Connectivity | Yes |

Dealer Installed Option:

| | |
|------------------------------|-----|
| Aqua Klean® Filtration | Yes |
|------------------------------|-----|

270



STRUCTURAL FEATURES

| | |
|-----------------------------------|-----------------------------|
| Dimensions..... | 83" X 83" / 211 cm x 211 cm |
| Depth..... | 36"/91 cm |
| Seating Capacity..... | 6-7 |
| Water Capacity (gal/liters) | 364 gal/1,378 ltr |
| Weight (empty) | 950 lbs /431 kg |
| Weight (full) | 3,968 lbs /1,800 kg |
| Drink Holders | 2 |
| Pillows | 4 |
| 3.5" Underwater Spa Light | Yes |

STANDARD UTILITY FEATURES

| | |
|---------------------------------------|-------------------------|
| Programmable Filter Cycles | Yes |
| Hybrid Sub-Structure..... | Yes |
| DuraMAAX® Cabinetry..... | Yes |
| Thermo-Lock® Insulation..... | Yes |
| Molded Bottom Pan | Yes |
| Stainless Steel Jets | Yes |
| Dynamic LED Lighting | Yes |
| Aurora Cascade Water Feature | 2 |
| Pump1 | 3.0Hp/6.0bHp, 240V, 2Sp |
| Pump2..... | 3.0Hp/6.0bHp, 240V, 2Sp |
| Pump1 (Export) | 3.0Hp/6.0bHp, 230V, 2Sp |
| Pump2(Export) | 3.0Hp/6.0bHp, 230V, 2Sp |
| Electrical Requirements (4-Wire)..... | 240V/40A/60A |
| Export..... | 230V, 50 Hz, 1x25A |
| Jet Total | 46 |

OPTIONAL FEATURES

| | |
|---|-----|
| CleanZone® System | Yes |
| CleanZone® Ultra (Dual Sanitization System) | Yes |
| Bluetooth Music System | Yes |
| WiFi Connectivity | Yes |
| Dealer Installed Option: | |
| Aqua Klean® Filtration | Yes |

271



STRUCTURAL FEATURES

| | |
|-----------------------------------|-----------------------------|
| Dimensions..... | 83" x 83" / 211 cm x 211 cm |
| Depth..... | 36"/91 cm |
| Seating Capacity..... | 6 |
| Water Capacity (gal/liters) | 375 gal/1,420 ltr |
| Weight (empty) | 934 lbs /424 kg |
| Weight (full) | 4,038 lbs /1,832 kg |
| Drink Holders | 2 |
| Lounge..... | Yes |
| Pillows | 3 |
| 3.5" Underwater Spa Light | Yes |

STANDARD UTILITY FEATURES

| | |
|--|-------------------------|
| Programmable Filter Cycles | Yes |
| Hybrid Sub-Structure..... | Yes |
| DuraMAAX® Cabinetry..... | Yes |
| Thermo-Lock® Insulation..... | Yes |
| Molded Bottom Pan | Yes |
| Stainless Steel Jets | Yes |
| Dynamic LED Lighting | Yes |
| Aurora Cascade Water Feature | 2 |
| Pump1 | 3.0Hp/6.0bHp, 240V, 2Sp |
| Pump2..... | 3.0Hp/6.0bHp, 240V, 2Sp |
| Pump1 (Export) | 3.0Hp/6.0bHp, 230V, 2Sp |
| Pump2(Export) | 3.0Hp/6.0bHp, 230V, 2Sp |
| Electrical Requirements (4-Wire) | 240V/40A/60A |
| Export..... | 230V, 50 Hz, 1x25A |
| Jet Total | 44 |

OPTIONAL FEATURES

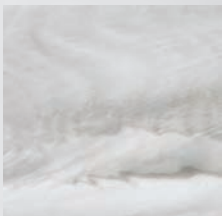
| | |
|---|-----|
| CleanZone® System | Yes |
| CleanZone® Ultra (Dual Sanitization System) | Yes |
| Bluetooth Music System | Yes |
| WiFi Connectivity | Yes |
| Dealer Installed Option: | |
| Aqua Klean® Filtration | Yes |

Specifications subject to change without prior notice.

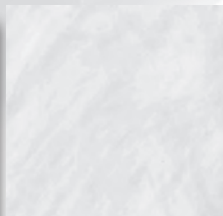
100-200 Series Color Palette

Acrylic Colors

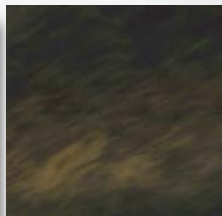
Glacier Mountain



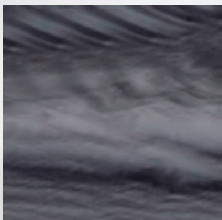
Silver Marble



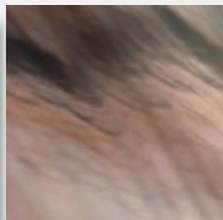
Midnight Canyon



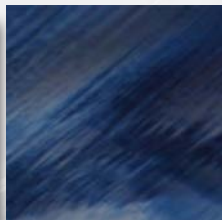
Storm Clouds



Tuscan Sun



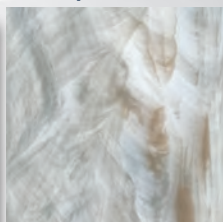
Majestic Sky



Sahara



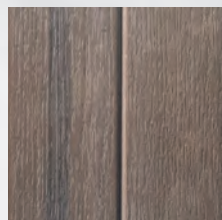
Smokey Mountain



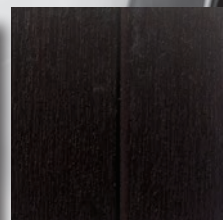
Cabinet Colors



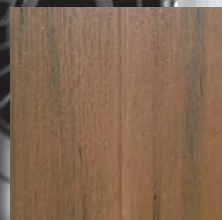
Gray



Mocha



Pecan



STRUCTURAL FEATURES

| | |
|-----------------------------------|-----------------------------|
| Dimensions | 92" X 92" / 234 cm x 234 cm |
| Depth | 36" / 91 cm |
| Seating Capacity | 7-8 |
| Water Capacity (gal/liters) | 433 gal / 1,639 ltr |
| Weight (empty) | 946 lbs / 429 kg |
| Weight (full) | 4,548 lbs / 2,135 kg |
| Drink Holders | 3 |
| Pillows | 4 |
| 3.5" Underwater Spa Light | Yes |

STANDARD UTILITY FEATURES

| | |
|---|-------------------------|
| Programmable Filter Cycles | Yes |
| Hybrid Sub-Structure | Yes |
| DuraMAAX® Cabinetry | Yes |
| Thermo-Lock® Insulation | Yes |
| Molded Bottom Pan | Yes |
| Stainless Steel Jets | Yes |
| Dynamic LED Lighting | Yes |
| Aurora Cascade Water Feature | 2 |
| Pump1 | 3.0Hp/6.0bHp, 240V, 2Sp |
| Pump2 | 3.0Hp/6.0bHp, 240V, 2Sp |
| Pump1 (Export) | 3.0Hp/6.0bHp, 230V, 2Sp |
| Pump2 (Export) | 3.0Hp/6.0bHp, 230V, 2Sp |
| Electrical Requirements (4-Wire) | 240V/40A/60A |
| Export | 230V, 50 Hz, 1x25A |
| Jet Total | 46 |

OPTIONAL FEATURES

| | |
|---|-----|
| CleanZone® System | Yes |
| CleanZone® Ultra (Dual Sanitization System) | Yes |
| Bluetooth Music System | Yes |
| WiFi Connectivity | Yes |
| Dealer Installed Option: | |
| Aqua Klean® Filtration | Yes |

281



STRUCTURAL FEATURES

| | |
|-----------------------------------|-----------------------------|
| Dimensions | 92" X 92" / 234 cm x 234 cm |
| Depth..... | 36"/91 cm |
| Seating Capacity..... | 6 |
| Water Capacity (gal/liters) | 440 gal/1,666 ltr |
| Weight (empty) | 1,009 lbs /458 kg |
| Weight (full) | 4,658 lbs /2,113 kg |
| Drink Holders | 2 |
| Lounge..... | Yes |
| Pillows | 3 |
| 3.5" Underwater Spa Light | Yes |

STANDARD UTILITY FEATURES

| | |
|--|-------------------------|
| Programmable Filter Cycles | Yes |
| Hybrid Sub-Structure..... | Yes |
| DuraMAAX® Cabinetry | Yes |
| Thermo-Lock® Insulation | Yes |
| Molded Bottom Pan | Yes |
| Stainless Steel Jets | Yes |
| Dynamic LED Lighting | Yes |
| Aurora Cascade Water Feature | 2 |
| Pump1 | 3.0Hp/6.0bHp, 240V, 2Sp |
| Pump2..... | 3.0Hp/6.0bHp, 240V, 2Sp |
| Pump1 (Export) | 3.0Hp/6.0bHp, 230V, 2Sp |
| Pump2(Export) | 3.0Hp/6.0bHp, 230V, 2Sp |
| Electrical Requirements (4-Wire) | 240V/40A/60A |
| Export..... | 230V, 50 Hz, 1x25A |
| Jet Total | 44 |

OPTIONAL FEATURES

| | |
|---|-----|
| CleanZone® System..... | Yes |
| CleanZone® Ultra (Dual Sanitization System) | Yes |
| Bluetooth Music System | Yes |
| WiFi Connectivity | Yes |

Dealer Installed Option:

| | |
|------------------------------|-----|
| Aqua Klean® Filtration | Yes |
|------------------------------|-----|

282



STRUCTURAL FEATURES

| | |
|-----------------------------------|-----------------------------|
| Dimensions | 92" X 92" / 234 cm x 234 cm |
| Depth..... | 36"/91 cm |
| Seating Capacity..... | 5 |
| Water Capacity (gal/liters) | 408 gal/1,544 ltr |
| Weight (empty) | 992 lbs /450 kg |
| Weight (full) | 4,376 lbs /1,985 kg |
| Lounge..... | 2 |
| Pillows | 3 |
| 3.5" Underwater Spa Light | Yes |

STANDARD UTILITY FEATURES

| | |
|------------------------------------|-------------------------|
| Programmable Filter Cycles | Yes |
| Hybrid Sub-Structure..... | Yes |
| DuraMAAX® Cabinetry | Yes |
| Thermo-Lock® Insulation | Yes |
| Molded Bottom Pan | Yes |
| Stainless Steel Jets | Yes |
| Dynamic LED Lighting | Yes |
| Aurora Cascade Water Feature | 2 |
| Pump1 | 3.0Hp/6.0bHp, 240V, 2Sp |
| Pump2..... | 3.0Hp/6.0bHp, 240V, 2Sp |
| Pump1 (Export) | 3.0Hp/6.0bHp, 230V, 2Sp |
| Pump2(Export) | 3.0Hp/6.0bHp, 230V, 2Sp |
| Electrical Requirements | |
| (4-Wire)..... | 240V/40A/60A |
| Export..... | 230V, 50 Hz, 1x25A |
| Jet Total | 44 |

OPTIONAL FEATURES

| | |
|---|-----|
| CleanZone® System..... | Yes |
| CleanZone® Ultra (Dual Sanitization System) | Yes |
| Bluetooth Music System | Yes |
| WiFi Connectivity | Yes |

Dealer Installed Option:

| | |
|------------------------------|-----|
| Aqua Klean® Filtration | Yes |
|------------------------------|-----|

Specifications subject to change without prior notice.

PowerPool®

The Ultimate In Backyard Fun





PowerPool™

SWIM. .



Swimming has long been known as the ultimate zero-impact exercise and is widely **prescribed by physicians** to patients who want to get in shape or tone their body. PowerPools® employ two different water propulsion systems that work in concert with its open floor plan design. Choose a multi jet deep stream for exercise or the MAAX Force™ swim system for the ultimate endless current swimming experience. The observation seats and well marked swim lanes provide the **optimum swim training center** for your entire family.

. TRAIN. .



A wide variety of aerobic exercises are possible in a PowerPool®. Aqua jogging is especially effective as the deep water neutralizes the effects of gravity while increasing resistance for an amazing low impact workout. **Fitness experts recommend** a warm water fitness regimen to maximize weight loss. Your PowerPool® can also be equipped with the aquatic exercise equipment package that features modern resistance band technology. Attach the resistance bands to perform a **complete toning program**.

A woman with sunglasses is relaxing in a white hot tub. The water is bubbling. In the background, there is a blue Adirondack chair and a white fence. The word "RELAX" is written in large white letters across the middle of the image.

RELAX

When you are finished working out, sit back and relax for a complete spa experience. Let the hydrotherapy jets massage those tight, sore muscles. A recent study shows a 10 minute massage improves muscle recovery after working out. Owning a swim spa allows you the convenience of enjoying it year round on your schedule. Invite your friends or that special someone over to enjoy the soothing waters with you.

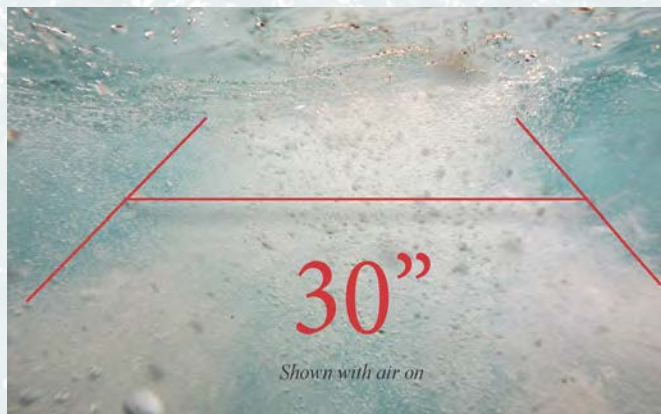
MAAX[®] **FORCE**

JET PROPULSION SWIM SYSTEM

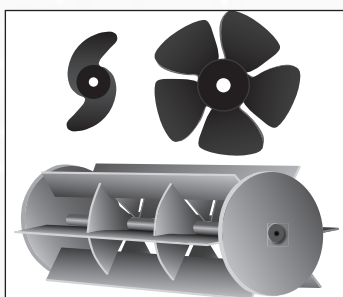
The new MAAX[®] Force jet propulsion system uses proprietary 'Anti-Turbulence' technology to boost and smooth the swim stream for the ultimate swimming experience. **Anti-turbulence technology** creates a powerful, smooth, variable jet stream that is completely adjustable and designed to allow you to swim at your individual fitness level.



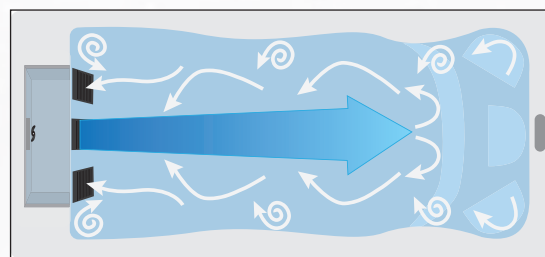
The MAAX Force Jet Propulsion Swim System has a 30 inch wide swim lane offering a superior swimming experience.



MAAX[®] Force Jet propulsion has **advantages over propellers or paddles** when creating a better swim stream. It is over 30" wide and easily produces a powerful swimming experience. You can also turn on the hydrotherapy mode to add air for a massage while you work out in the jet stream.



Propeller and Impeller Systems



Propeller system turbulence

Four Seasons Swimming

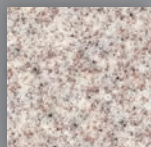
Enjoy the benefits of outdoor swimming all year long in a PowerPool® swim spa. In many places of the world the outdoor swimming season is short and heating a conventional in-ground pool is expensive and impractical. With your new PowerPool® you can swim and entertain guests any time of the year without the hassle and cost of a swimming pool. Never worry about winterizing your swimming pool again, PowerPool® swim spas are made with the same high efficiency Northern Exposure® insulation system as our hot tubs. Additionally the locking insulated cover means your PowerPool® is hot and ready to use any time of the year.

Swim, Train and Relax year round!

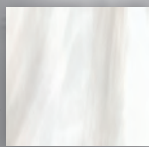


Built to the MAAX

The PowerPool® is built to the same quality standards as our appliance grade hot tubs. Every model features our steel frame, Northern Exposure® insulation and ABS bottom pan.



SAHARA



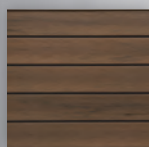
SILVER MARBLE



MODERN
MOCHA



RESORT
GRAY



PECAN
RIDGE

MX6 SIDING COLORS

MX6

| | |
|-----------------------------|--------------------|
| Length in/cm | 190"/483 cm |
| Width in/cm | 90"/229 cm |
| Height in/cm | 61"/155cm |
| Weight (empty) | 3,000 lbs/ 1361 kg |
| Weight (full) | 15,800 lbs/7161 kg |
| Water Capacity (gal/liters) | 2118 gal/8018 L |
| Seats | 3 |
| Depth in/cm | 57"/145 cm |
| Grab Bar | 1 |
| Steel Substructure | Yes |
| Northern Exposure® | Yes |
| Prog. Filter Cycles | Yes |
| 3.5" Underwater Light | Yes |
| LED Illuminated swim lane | Yes |
| Pump 1 | 3.0Hp/6.0bHp 2Sp |
| Pump 2 | 3.0Hp/6.0bHp 2Sp |
| Pump 3 | 3.0Hp/6.0bHp 1Sp |
| Pump 4 | 3.0Hp/6.0bHp 1Sp |
| Elct Req. | 240V/60A |
| Export | 230V, 50Hz, 1x35A |
| Head Cushions | 2 |
| Digital Color Optics | Yes |
| Status Indicator Light | Yes |
| MAAXForce™ Swim Jets | 3 |
| Hydrotherapy Jets | 25 |
| Aurora Cascade Jets | 4 |
| Stainless Steel Jets | Yes |

Options

Bluetooth Music System

CleanZone®

CleanZone® Ultra (Dual Sanitization System)

Wifi Connectivity

Exercise Kit

Swim Tether

Note: Specifications are subject to change without prior notice.
See retailer for current specifications.

RS2

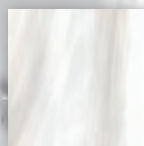
| | |
|------------------------------|--------------------|
| Length in/cm | 144"/366 cm |
| Width in/cm | 90"/228 cm |
| Height in/cm | 50"/127 cm |
| Weight (empty) | 2,200 lbs/ 998 kg |
| Weight (full) | 14,808 lbs/6717 kg |
| Weight Capacity (gal/liters) | 1010 gal/3823 L |
| Seats | 7 |
| Depth in/cm | 46"/117 cm |
| Grab Bar | 1 |
| Steel Substructure | Yes |
| Northern Exposure® | Yes |
| Prog. Filter Cycles | Yes |
| 3.5" Underwater Light | Yes |
| LED Illuminated swim lane | Yes |
| Pump 1 | 3.0Hp/6.0bHp 2Sp |
| Pump 2 | 3.0Hp/6.0bHp 2Sp |
| Pump 3 | 3.0Hp/6.0bHp 2Sp |
| Elct Req. | 240V/50A/60A |
| Export | 230V, 50Hz, 1x35A |
| Head Cushions | 2 |
| Digital Color Optics | Yes |
| Status Indicator Light | Yes |
| Turbo Swim Jets | 6 |
| Hydrotherapy Jets | 69 |
| Aurora Cascade Jets | 4 |
| Stainless Steel Jets | Yes |

Options

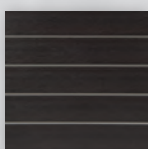
Bluetooth Music System
 CleanZone®
 CleanZone® Ultra (Dual Sanitization System)
 Wifi Connectivity
 Exercise Kit
 Pneumatic Power Oars



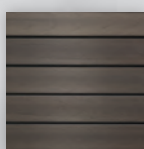
SAHARA



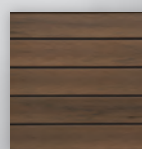
SILVER MARBLE



MODERN
MOCHA



RESORT
GRAY



PECAN
RIDGE

RS2 SIDING
COLORS

Note: Specifications are subject to change without prior notice.
 See retailer for current specifications.

RL4/ML4

| | |
|-----------------------------|--------------------|
| Length in/cm | 168"/427 cm |
| Width in/cm | 90"/228 cm |
| Height in/cm | 50"/127 cm |
| Weight (empty) | 2,000 lbs/ 907 kg |
| Weight (full) | 13,200 lbs/5987 kg |
| Water Capacity (gal/liters) | 1550 gal/5867 L |
| Seats | 3 |
| Depth in/cm | 47"/119 cm |
| Illuminated Drink Holders | 2 |
| Grab Bar | 1 |
| Steel Substructure | Yes |
| Northern Exposure® | Yes |
| Prog. Filter Cycles | Yes |
| 3.5" Underwater Light | Yes |
| LED Illuminated swim lane | Yes |
| Pump 1 | 3.0Hp/6.0bHp 2Sp |
| Pump 2 | 3.0Hp/6.0bHp 2Sp |
| Pump 3 (ML4 only) | 3.0Hp/6.0bHp 2Sp |
| Elct Req. / RL4 | 240V/40A/60A |
| Elct Req. / ML4 | 240V/50A/60A |
| Export / RL4 | 230V, 50Hz, 1x25A |
| Export / ML4 | 230V, 50Hz, 1x35A |
| Head Cushions | 2 |
| Digital Color Optics | Yes |
| Status Indicator Light | Yes |
| Turbo Swim Jets / RL4 | 4 |
| MAAXForce™ Swim Jets / ML4 | 2 |
| Hydrotherapy Jets | 19 |
| Aurora Cascade Jets | 6 |
| Stainless Steel Jets | Yes |

Options

Bluetooth Music System
 CleanZone®
 CleanZone® Ultra (Dual Sanitization System)
 Wifi Connectivity
 Exercise Kit
 Pneumatic Power Oars
 Swim Tether

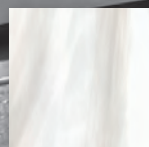
Note: Specifications are subject to change without prior notice.
 See retailer for current specifications.



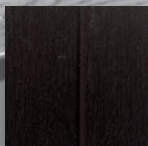
ML4 Shown



SAHARA



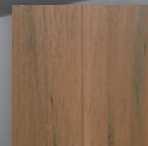
SILVER MARBLE



MOCHA



GRAY



PECAN

RL4 SIDING COLORS



MODERN MOCHA



RESORT GRAY



PECAN RIDGE

ML4 SIDING COLORS

RB4/MB4

| | |
|-----------------------------|--------------------|
| Length in/cm | 168"/427 cm |
| Width in/cm | 90"/228 cm |
| Height in/cm | 50"/127 cm |
| Weight (empty) | 2,200 lbs/ 998 kg |
| Weight (full) | 11,400 lbs/5170 kg |
| Water Capacity (gal/liters) | 1325 gal/5016 L |
| Seats | 3 |
| Depth in/cm | 47"/119 cm |
| Illuminated Drink Holders | 2 |
| Grab Bar | 1 |
| Steel Substructure | Yes |
| Northern Exposure® | Yes |
| Prog. Filter Cycles | Yes |
| 3.5" Underwater Light | Yes |
| LED Illuminated swim lane | Yes |
| Pump 1 | 3.0Hp/6.0bHp 2Sp |
| Pump 2 | 3.0Hp/6.0bHp 2Sp |
| Pump 3 (MB4 only) | 3.0Hp/6.0bHp 2Sp |
| Elct Req. / RB4 | 240V/40A/60A |
| Elct Req. / MB4 | 240V/50A/60A |
| Export / RB4 | 230V, 50Hz, 1x25A |
| Export / MB4 | 230V, 50Hz, 1x35A |
| Head Cushions | 2 |
| Digital Color Optics | Yes |
| Status Indicator Light | Yes |
| Turbo Swim Jets / RB4 | 4 |
| MAAXForce™ Swim Jets / MB4 | 2 |
| Hydrotherapy Jets | 19 |
| Aurora Cascade Jets | 6 |
| Stainless Steel Jets | Yes |

Options

Bluetooth Music System
 CleanZone®
 CleanZone® Ultra (Dual Sanitization System)
 Wifi Connectivity
 Exercise Kit
 Pneumatic Power Oars
 Swim Tether

Note: Specifications are subject to change without prior notice.
 See retailer for current specifications.



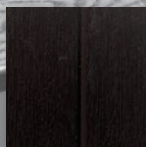
MB4 Shown



SAHARA



SILVER MARBLE



MOCHA



GRAY

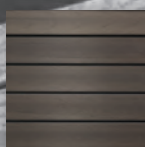


PECAN

RB4 SIDING
COLORS



MODERN
MOCHA



RESORT
GRAY



PECAN
RIDGE

MB4 SIDING
COLORS

DM8

| | |
|-----------------------------|--------------------|
| Length in/cm | 218"/553 cm |
| Width in/cm | 90"/229 cm |
| Height in/cm | 53"/135 cm |
| Weight (empty) | 3,000 lbs/ 1361 kg |
| Weight (full) | 19,574 lbs/8879 kg |
| Water Capacity (gal/liters) | |

| | |
|----------|-----------------|
| swim end | 1650 gal/6245 L |
| spa end | 300 gal/1136 L |

| | |
|---------------------------|------------------|
| Swim Seating | 3 |
| Spa Seating | 5 |
| Depth in/cm | 48"/122 cm |
| Illuminated Drink Holders | 1 |
| Grab Bar | 1 |
| Steel Substructure | Yes |
| Northern Exposure® | Yes |
| Prog. Filter Cycles | Yes |
| 3.5" Underwater Light | Yes |
| LED Illuminated swim lane | Yes |
| Pump 1 | 3.0Hp/6.0bHp 2Sp |
| Pump 2 | 3.0Hp/6.0bHp 2Sp |
| Pump 3 | 3.0Hp/6.0bHp 2Sp |
| Spa Pump | 3.0Hp/6.0bHp 2Sp |
| Elct Req. | |

| | |
|----------|--------------|
| swim end | 240V/50A/60A |
| spa end | 240V/40A/50A |

| | |
|----------------------|-------------------|
| Export / Swim End | 230V, 50Hz, 1x35A |
| Export / Spa End | 230V, 50Hz, 1x25A |
| Head Cushions | 2 |
| Digital Color Optics | Yes |
| MAAXForce™ Swim Jets | 2 |
| Hydrotherapy Jets | 31 |
| Aurora Cascade Jets | 4 |
| Stainless Steel Jets | Yes |

Options

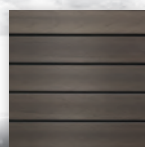
Bluetooth Music System
 CleanZone® Ultra (Dual Sanitization System)
 Wifi Connectivity
 Exercise Kit
 Exercise Kit with Oars
 Swim Tether



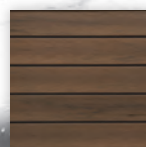
SILVER MARBLE



MODERN
MOCHA



RESORT
GRAY



PECAN
RIDGE

Note: Product models, features and options are subject to change.
 See retailer for current specifications.





AMERICANWHIRLPOOL.com

MAAX Spas Industries Corp. • 25605 S. Arizona Ave. • Chandler, AZ 85248

©2020 MAAX Spas Industries Corp. All rights reserved. Manufactured by MAAX Spas Industries Corp. Specifications subject to change without notice. Spas shown at various percentages of actual size. AMERICAN WHIRLPOOL, Foot Relief Zone, Zone Therapy, Comfort Collar, CleanZone, CleanZone Ultra, Powerworks, TheraMAAX, BlueMAAX, Northern Exposure, and DuraMaax are official trademarks of MAAX Spas Industries Corp. 3M and Thinsulate are Registered trademarks of 3M.

Rev 011920