

Come home to  
a Canadian spa

- Hot tubs • Swim spas • Gazebos
- Accessories • Chemicals

[www.canadianspacompany.com](http://www.canadianspacompany.com)



# Canadian Spa

Ever since the Romans invented baths, people have enjoyed the indulgence and feeling of rejuvenation provided by a hot spa. Now you can enjoy what was once an occasional luxury every day of the year in your own garden.

The Canadian Spa Company, one of Canada's leading manufacturers have years of experience in outdoor leisure products and only the very best components; the quality and attention to detail is second to none.

Troy Labelle  
Founder



## Spa health benefits

The massaging action of a spa will accelerate the healing process of aches and pains. Warm, swirling water reduces stress and allows you to rest, giving you a better nights sleep by refreshing your body and mind to tackle the next day. Sufferers from arthritis with painful or inflamed joints will find that hydrotherapy will help relax the muscles and allow a greater range of motion in the joints.

### Arthritis

Painful or inflamed joints can cause muscles to tense in an effort to protect them. Warm water and hydrotherapy help relax the muscles and pain is often reduced, even after leaving the spa.

### Bouyancy

When submerged in water your body is about 1/10 its normal weight. Buoyancy is a key element of relaxation and stress relief. It helps overcome the effects of gravity and relieves stress on the joints.

### Exercise

Exercising can cause microscopic tears in the muscle and lactic acid build up. The warm massaging action of a spa will accelerate the healing process and allows the lactic acid to be carried away from the muscles. As muscles relax and pain eases you move more easily with less pain.

### Sleep

Warm swirling water reduces stress and allows you to rest and get a better sleep. Sleep deepens as body temperature drops. Experts recommend that people who suffer from sleeplessness soak in a spa at 38° to 40°C (100°-104°F) for 15 minutes before bedtime.

### Pain relief

Endorphins are natural painkillers for the body. Warm water stimulates their release. When the body is in warm water, blood vessels near the skin relax.



[www.canadianspacompany.com](http://www.canadianspacompany.com)

# Come home to a Canadian spa

## Pressure points

All of our spas incorporate a unique pressure point system, which delivers soothing water to specific points on the body. If your problem area is in the hard to reach neck or shoulder region, many of our spas have a unique moulded neck support with recessed neck jets, which create a truly invigorating experience.

Additionally, across all our spas, various types of jets allow you to massage different muscles with different water pressure.

Air controls mean you can adjust the jets – from a soft gentle massage to a vigorous work out.

## Spas that last

All spas have high quality stainless steel jets. The proven efficiency of this jet system assures you reliable performance that you will enjoy for years to come.

The shells are made from super tough, four layer bonded plastic and acrylic, which eliminates any blistering or cracking.

## Choose your location

When thinking about where to position your spa pool, you should consider:

- The view from the house to the spa, and the view from the spa itself.
- Ensure quick and easy access from your house to the spa.

- Direction of drainage. Water should always drain away from the spa. Do not locate your spa in a low run-off area – rainwater could flood the area and cause pump and equipment damage.
- If you are installing the spa within a deck, the entire spa base must be sitting directly on the prepared base. The lip of the shell must not support any weight.
- The minimum clearance for entry to the spa's access panel for servicing is 1 metre or 39 inches.
- The spa should not be located near or under overhead wires and must be kept clear of all electrical appliances.

## Planning permission

Under normal circumstances planning permission is not required, but we recommend consulting your local planning office prior to purchase.

## Pre-delivery preparation\*

- The site you select for your spa must be a flat, level continuous surface that contacts the bottom of your spa fully.
- Spas weigh between 900kg -1,900kg (1,984 - 4,188lbs) when full, so a solid support is essential. A 10-15cm (4" - 6") thick reinforced concrete slab is ideal, but not a requirement. In most cases your spa can be placed on a properly fitted existing patio. Your spa can be mounted on a deck, but it must be of solid construction.

Either way, it is recommended you install your spa at ground level to allow easy internal access. The base needs to be at least the same size as the footprint of your spa.

Check individual spa measurements for details.

- The power supplied must be a dedicated RCD / GFCI protected circuit. You will need to get a qualified electrician to undertake this work (check spa for Amp requirement).
- Plug and play models plug directly into a normal outlet.

## Delivery and access

The spa will arrive as a unit and cannot be dismantled. You will need to have sufficient clearance for the spa to be rolled into place on a trolley, either on its side or on its base. (See measurements for each spa.)

*\*All sizes and specifications are approximate and we reserve the right to change without notice.*







# Why buy a Canadian Spa

Canadian Spa Company offers a range of spas with great features to suit every need.

## State of the art control packs

A spa is controlled by a processor pack which works with all the components of the spa. It controls heating and filtration whilst built-in sensors check that your spa is running efficiently. The spa pack is essentially the brains of your spa



and we install the best in order to deliver the flexibility, control and smooth performance vital to any Canadian spa.

## Filtration and cleaning

For complete flow-through purification, Canadian Spa Company uses a single or dual canister skimmer filtration system. The Canadian Spa hot tub is a self-contained unit that does not require a dedicated water connection and will automatically filter the water without any need for user



interaction. The spa pump runs at low speed to purify and clean the water within the spa. During this phase the water is drawn in through the filter to catch large debris and then injected with Ozone gas to help remove any harmful bacteria. Automatic filtration and cleaning is needed to ensure your water is fresh and clear.



100sq ft filtration with pre filters

## Microban 'Silver Ion' Filters

Microban filters with silver ion\* provide an added level of defence that keeps your filter cleaner between cleanings. Silver ion is infused into the grey plastic of the Microban filter. The Silver Ions disinfect water so that micro-organisms like bacteria cannot cause disease.



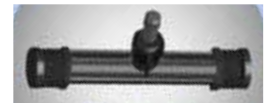
Silver Ions act in similar ways to Chlorine, but do not have the Chlorine odour and are not chemical based. This means they do not usually bother people with sensitive skin the way chlorine does. While Chlorine eventually fades away, silver ions remain active as long as they are present in the water.

## Ozone



We use a unique system to cleanse the water within the spa. Water is passed through a filter which sifts out debris and dirt. Our spa includes a Ozonator which creates Ozone gas, this drawn out of the ozonator using the flow of the spa water. The bacteria in the water is exposed to the Ozone and the reaction creates a clean water.

Canadian Spa Company further uses a 'Mazzei slow-flow' system before being pushed through mixing chamber and back to the spa.



This is in contrast to just putting ozone through a small jet only allowing minimal benefit because the ozone is not absorbed into the spa water.



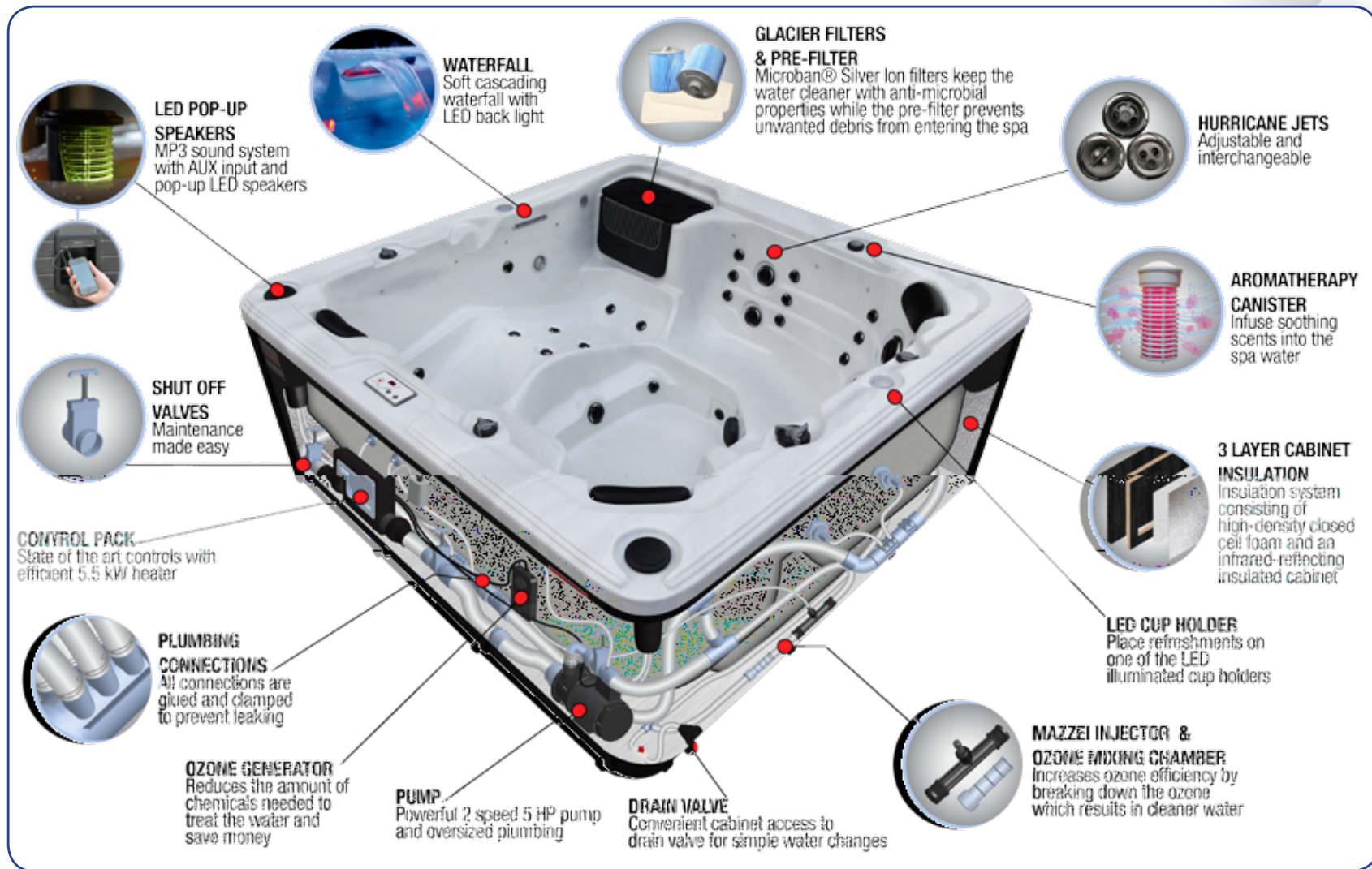
## Ozone mixing chamber

The Mazzei injector helps dissolve the Ozone into the water by creating smaller bubbles that are easier to break and be absorber into the water. Our next stage is to put the water through our a mixing chamber where it further breaks down the ozonated bubbles into the water.

This concentrates the Ozone allowing it to kill more bacteria and reducing wear and tear on your spa cover. This will ensure maximum natural sanitisation of your water, greatly reducing chemical consumption with virtually no off gas effects.

# built to endure

We take pride in using only the best materials in the industry, such as genuine Aristech or Dupont Acrylic sheets for unsurpassed product protection. Canadian Spa Company uses only the finest components from the industries leading manufacturers for exceptional durability.





# Why buy a Canadian Spa

## Jets delivery system

Jets give out that massaging, relaxing feeling associated with hot tubs and as such need to be able to supply a high pressure current on demand anywhere in the spa. To power our hydro-therapy massages Canadian Spa uses a uniquely designed pump.



Our oversized (2.6") pump intake allows more water to be drawn in and pumped out efficiently at a faster and higher pressure. This allows our spas to work off a lower electrical amperage than similar specification models delivering greater output whilst saving on running costs.

## Jet customisation

The jets within our spas are individually customisable in a number of different ways. Jets can be controlled by the top-side control system or manually changed using the diverter and air controls in order to experiment with positions and settings. This allows you to target different massage combinations and whether you use directional, rotational or twin rotational massage jets you are sure to find the exact massage style to suit your needs. Same sized jets can be changed from their original positions in the spa by turning the jets counter-clockwise to eject them from the jet housing and placed within a similar sized jet housing elsewhere in the spa.

## Air control valves

These valves (air venturies) add bubbles of air to the water stream. For example the more the valve is turned the larger the bubbles that are added to the water. The bigger the bubbles the higher the pressure. Models with a heated air blower can further increase the pressure by 'turbo injecting' air through the water lines resulting in increased pressure without cooling.



## Energy efficiency through insulation

The energy efficiency of your hot tub is critical to determine how much your spa costs to run. The most important part of this efficiency is maintaining the heat once the spa reaches temperature.



*Quality insulated hot tub covers designed to withstand the harshest Canadian winters*

The heater starts heating the water to a set temperature then shuts off to maintain this temperature intelligently within 0.5°C but this needs to be coupled with a high level of insulation to be effective.

A quality hot tub cover prevents the majority of the heat loss on a spa. Canadian Spa covers are specifically designed to keep the heat in, even in the depths of a Canadian winter! Our covers are 5" thick tapering down to 3" providing a higher level of insulation when compared with others on the market (typically 4" to 2" or less). The taper/gradient allows snow or rain water to run-off the spa easily which would otherwise affect the insulation. In addition, a heat seal between the two sides of the cover ensures no heat is lost from the hinge.

## Features as standard

When we build a spa, we build with all the options and features as standard including:

- **Perimeter lighting:** Perimeter 'waterline' lighting and cascading LED-backlit waterfall(s) plus a large under water LED safety light to help users enter/exit the spa.
- **MP3 System:** All our acrylic spas come equipped with a set of water-resistant speakers that can play music from any device with a standard (3.5mm) headphone jack. Illuminated speakers slowly rise and retract from their housing designed to make them look a seamless part of the overall design of the spa.
- **Adjustable jets:** Our spa jets are adjustable allowing you to individually target specific muscle groups with varying pressures. They are easy to grip especially if you suffer from arthritis.

## Accessories as standard

When you purchase a spa from us we always include: a hard top insulating cover, a set of steps and an installed filter included as standard. All these features create a relaxing and unique spa experience. Our Customer Care department can assist wherever possible providing product advice, help with accessories, chemical ordering as well as spa maintenance and service.

## Safety

The safety of family and friends is paramount when protecting the ones you love. At Canadian Spa when you join our family we have the same philosophy. All, our passive safety features are built into the spa providing constant protection whilst you relax.



## Warranty

At Canadian Spa we pride ourselves in our customer service ability and believe that great service should be expected with every purchase. To honour this belief we require that each customer register their warranty on our website so that their spa can be maintained now and in the future.

## Over 30 years experience

Canadian Spa have over 30 years manufacturing experience in North America, Europe and throughout the world with award winning customer service.



*Canadian Spa Company offer after sales service packages as well as replacement parts. Ask for details.*

# Hot tub - top view product guide



## 15. Pop LED speakers:

Built into each of our spas is an audio system that is compatible with any MP3 player or smart phone to play music while enjoying the spa. Each pop up speaker is illuminated to match the LED perimeter lighting.



## 14. Diverter control:

Controls the water pressure between the different seats by diverting the water flow around the spa.



## 13. LED cup holder:

Illuminated placeholder for a glass of your favourite drink (plastic glasses only please).



## 12. Foot jets:

Extra jets located in the foot well to massage your feet.



## 11. Adjustable jets:

Our jets provide complete customisation of the water pressure in the spa. Each jet can be individually adjusted to either increase or decrease the pressure, and the stylised grip allows for the jets to be easily interchangeable.



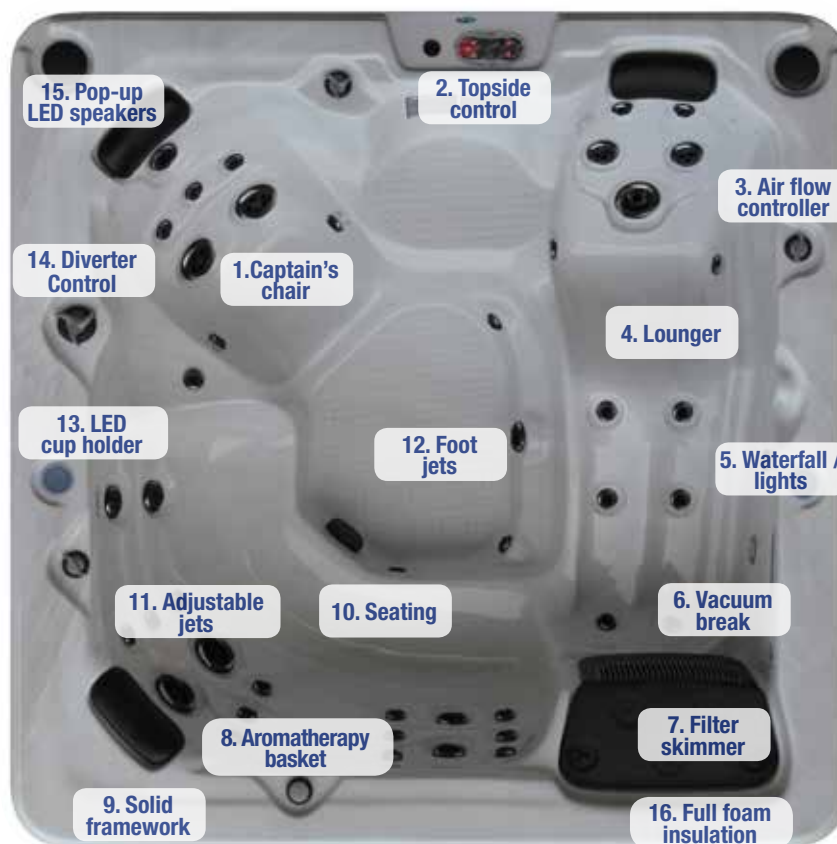
## 10. Seating:

Each spa is designed to maximise comfort with its contoured seating and innovative mould. Everyone will enjoy the various seating styles from the no-float lounge and deep 'Captain's' chair to the barrier-free bench and elevation seat for children.



## 9. Solid frame construction:

A Canadian Spa Company spa is built from the ground up with a totally enclosed floor and reinforced framing.



(Top view based on Toronto model)



## 1. 'Captain's' Chair:

Specially sculpted 'Captain's' Chair for the ultimate back massage.



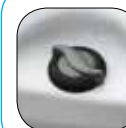
## 16. Full foam insulation:

Full foam coated components designed to maximise insulation.



## 2. Topside control panel:

An easy to use control panel allows for complete control of the spa components, whether it is the pump, blower, temperature, or lighting.



## 3. Air flow control:

Adjust the massage action and jet pressure by changing the air flow.



## 4. Lounger:

Integral lounger to let you lie back and receive a full body massage.



## 5. Waterfall & perimeter lighting:

Helps to create a relaxing spa mood to soothe your mind.



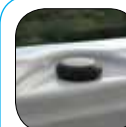
## 6. Vacuum brake:

User safety is the top priority for Canadian Spa Company, and with our Vacuum Brake the suction inside the spa is immediately cut off if any of the intakes are blocked.



## 7. Filter skimmer:

The 'Fresh Water' filter pack from Canadian Spa offers 100 ft<sup>2</sup> filtration. Includes 2 'Microban Silver Ion' filters and 2 pre-filters. The key benefit is that the filter cartridges in the hot tub have their life significantly increased by use of the pre-filter.



## 8. Aromatherapy basket

Scented beads can be placed inside this canister to activate the aromatherapy feature of the spa. This canister is connected to the air line of each jet and directly infuses the jet stream with the therapeutic scents.

# Plug & Play Hot tubs



*plugandplay*

- Easy to install - just plug in and start using your spa straight away! - no electrician required
- Energy efficient
- Three different sizes to choose from
- Maintenance free cabinet
- Portable and easy to relocate

	Yukon	Quebec	Winnipeg
• Jet Breakdown	17	29	35
• Shoulder & Neck Jets	4	4	4
• Back Jets	8	17	21
• Hip Jets	4	4	4
• Leg Jets	-	2	4
• Foot Jets	1	2	6



## Yukon 2 person spa

The Yukon Spa fits almost any location. This roomy but small spa is packed with all the features of a full size spa.

It easily accommodates 2 adults. Features include Ozone, hard top cover, 2 speed pump.

Features include:

- 17 Stainless steel jets,
- The latest control technology from Balboa provides safe, efficient, and easy-to-use operation
- MP3 sound system with pop up speakers
- LED mood lighting system
- Hard top safety cover

*plugandplay*





# Plug & Play Hot tubs

## Quebec 3 person spa

The Quebec Spa fits in almost any location. This roomy but small spa is packed with all the features of a full size spa.

It easily accommodates 3 adults.  
This is the perfect spa for your sun room.

Features include:

- 29 Stainless steel jets.
- Hard top cover
- Powerful 2 speed pump.
- MP3 sound system with pop up speakers
- 100ft<sup>2</sup> of filtration along with an included ozone generator Mazzei injector and mixing chamber to keep your water clean



*plugandplay*

2 Seats	1 Lounger	170 gal 645 L Capacity	29 Jets	i-Pod MP3 Audio System	100 ft <sup>2</sup> Filter Size
2kW Heater	79" x 59" x 32" 200 x 150 x 80 cm Dimensions	550 lb 250 kg Ship Weight	Ozone installed	Waterfall	Aromatherapy



## Winnipeg 5 person spa

A full-featured family spa with high-quality insulation suited for the coldest climates.

Stretch out in the no-float lounge chair and enter a world of soothing relaxation that will help relieve the stress and tension of this fast paced world.

35 hydro-massage stainless steel jets together with a powerful 2 speed pump high output heater.

- Features perimeter multicoloured LED mood lighting, cascading waterfall, ozone water purification system, and built-in aromatherapy canister
- Equipped with digital MP3 audio sound system with pop-up LED speakers



*plugandplay*

5 Seats	1 Lounger	236 gal 895 L Capacity	35 Jets	i-Pod MP3 Audio System	100 ft <sup>2</sup> Filter Size
2 kW Heater	79" x 79" x 32" 200 x 200 x 80 cm Dimensions	785 lb 330 kg Ship Weight	Ozone installed	Waterfall	Aromatherapy



# Hot tubs

## Choosing your spa

### Features to look for:

- Multi-level seating - different jets provide a new spa experience in each seating position
- Body contoured lounger shaped for comfort and support so you can lay down and relax
- Powerful water pumps with high amperage pumps
- Electronic control - for temperature, filter cycles, water jets, air jets and lights. WiFi Ready
- Heater to keep your spa at a constant temp with a max of 40°C / 104°F
- Hard top 5 7/8" tapered cover with 8 straps, 6 handles and a fully hinged steam seal  
Cover is custom fit to minimise operating costs and maintain maximum safety
- Ozone cleaning system - an ultraviolet light system acts to automatically ozonate the water at regular intervals, which disinfects and kills bacteria in the water. A delivery system including a Mazzei injector and mixing chamber
- Interactive jets - can be easily manipulated to adjust the volume and flow of the heated water in varying combinations for different massage effects
- Aromatherapy unit - to capture the power of scent to enhance relaxation and improve your overall state of mind
- Steps - for easy access to the spa
- LED Light with changeable coloured LEDs to create the mood of your choice
- Silver Ion Microban Filters for clean fresh water
- MP3 Sound System with LED pop up speakers
- After sales service and technical support



LED lighting and waterfall



Stainless steel jets



MP3 Sound system with LED illuminated speakers



Multi-level seating and loungers



Hard top cover and steps for easy access



Powerful 5 HP water pumps



Fresh water filter packs for cleaner fresher water



# Hot tubs



## Toronto 6 person spa

Slow down and enjoy each other's company in a Toronto hot tub while 44 adjustable stainless steel jets help to work out that knot in your back. A powerful 2 speed 5-HP pump and adjustable air valves ensure that everyone receives the pressure that they require.

Relax with a gentle playlist from the included pop-up waterproof speakers and let the perimeter LED lighting and aromatherapy system calm your senses. Every Toronto spa is manufactured with Lucite acrylic and an ozone generator and mixing chamber to assist with the water.

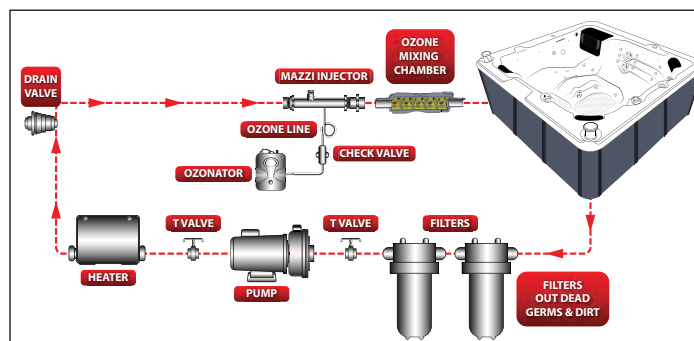
5 Seats	1 Lounger	259 gal 980 L Capacity	44 Jets	i-Pod MP3 Audio System	100 ft <sup>2</sup> Filter Size
3/5.5 kW Heater	84" x 84" x 33" 213 x 213 x 82 cm Dimensions	840 lb 380 kg Ship Weight	Ozone installed	Waterfall	Aromatherapy



Hot tub hard top cover with steps



New 100sq ft filtration skimmer basket with Pre-filters



## Thunder Bay Spa



The Thunder Bay's two sculpted 'Captain's chairs' with integrated arm rests form the basis of this beautiful design ensuring that the Thunder Bay is unbelievably comfortable.

Enjoy a deep leg massage in the lounger seat as this two pump spa uses a mix of water and air to soothe aching calves and hamstrings.

5 Seats	1 Lounger	333 gal 1230 L Capacity	44 Jets	i-Pod MP3 Audio System	100sq ft Filter Size
3/5.5 kW Heater	86" x 86" x 33" 218 x 218 x 83 cm Dimensions	880 lb 399 kg Ship Weight	Ozone installed	Waterfall	Aromatherapy

# Hot tubs

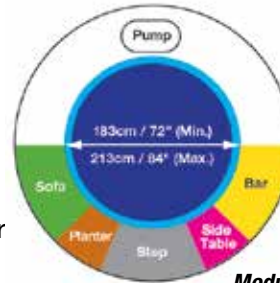


## Ottawa 6 person round spa

The Ottawa is designed for people who prefer a circular seating arrangement where family and guests can interact whilst enjoying back, seat and foot massage jets.

The Spa includes a 3 person 'love seat' and 3 other individual seats. The top mounted 100sq ft filtration system uses with Microban Silver Ion filter and comes with a pre-filter to maximise filtration and keep you spa sparkling.

The round design is also a good choice for creating that special landscape project in any garden. The modular Spa Surround system allows customers to select items and configure their spa furniture personally.



**Modular spa furniture system:**  
Allows customers to select items and configure their spa furniture personally.



<b>6</b> Seats	<b>0</b> Lounger	<b>220 gal</b> 835 L Capacity	<b>38</b> Jets	<b>iPod</b> MP3 Audio System	<b>100 ft²</b> Filter Size
<b>3 / 5.5</b> kW Heater	<b>80" x 35"</b> 203 x 90 cm Dimensions	<b>617 lb</b> 280 kg Ship Weight	<b>Ozone installed</b>	<b>Waterfall</b>	<b>Aromatherapy</b>



## Victoria 7 person spa

The Victoria spa offers an unparalleled therapeutic quality massage with a standard feature list that sets it miles above the competition. This superb spa is in every sense of the word a therapeutic massage spa. It incorporates hydrotherapy, chromotherapy, skin therapy, and aromatherapy packages. With a twin pumps 5 HP system this monster will satisfy even the hardest athlete for muscle massage. The 46 hydrotherapy massage jets can be combined in unlimited combinations and degrees to suit every taste from the gentlest touch to firm deep muscle massaging power.

<b>7</b> Seats	<b>0</b> Lounger	<b>325 gal</b> 1230 L Capacity	<b>46</b> Jets	<b>iPod</b> MP3 Audio System	<b>100sq ft</b> Filter Size
<b>3 / 5.5 kW</b> Heater	<b>86" x 86"</b> 218 x 218 x 86 cm Dimensions	<b>785 lb</b> 330 kg Ship Weight	<b>Ozone installed</b>	<b>Waterfall</b>	<b>Aromatherapy</b>





## Niagara 6 person spa

The Niagara spa incorporates high-quality insulation suited for the coldest climates. Stretch out in the no-float lounge chair and enter a world of soothing relaxation that will help relieve stress and tension.

This spa would suit even the largest of families with it's seven seat configuration including LED lighting, MP3 dock, pop up speakers and 60 stainless steel jets powered by twin 5 HP water pumps. With the combined power of twin hydro-massage pumps and a 900 Watt heated air blower you will be sure that everyone is satisfied and no one is left out.

- Multi-level seating with internal step
- Latest spa control technology provides safe, efficient, and easy-to-use operation
- MP3 sound system with pop up speakers
- 100 sq. ft. of filtration along with an included ozone generator to keep your water clean without hassle



# Hot Tubs

## Montreal 3 person spa



Young couples, best friends, and those whose children have now left home all love the Montreal.

This compact hot tub proves itself by delivering many features in a small footprint.

Move the Montreal into your garden with ease, making the old adage true, good things do come in small packages.

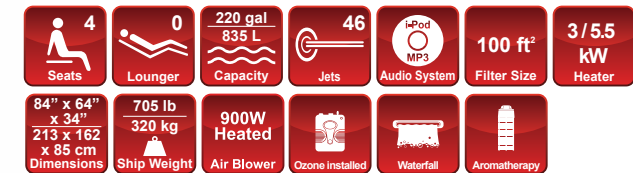


## Halifax 4 person spa



A small, deep spa that can comfortably seat four people and still deliver great therapy. Ideal for the locations where space is at a premium.

The Halifax is our most compact spa, but it will surprise you with how well it accommodates you and your friends.



	Montreal	Halifax	Alberta	Vancouver
• Jet Breakdown	44	46	57	65
• Shoulder & Neck Jets	2	9	8	8
• Back Jets	13	17	21	25
• Hip Jets	4	4	2	4
• Leg Jets	6	2	8	8
• Foot Jets	7	2	6	8
• Heated Air Jets	12	12	12	12



## Alberta 6 person spa



Reserved for the serious hot tub connoisseur, the Alberta offers unparalleled therapy, and a quality massage

It incorporates hydrotherapy, chromotherapy, skin therapy and aroma therapy packages. 2 x 5HP powerful system will satisfy even the hardest athlete for muscle massage.

The 45 hydrotherapy massage jets can be combined in unlimited combinations.

## Vancouver 7 person spa



The Vancouver spa is a perfect hot tub for couples with its dual loungers to provide a deep tissue massage to both people at the same time.

This large 7 person spa is a great addition to any backyard and will provide you and your guests with hours of enjoyment.

2 x 5 HP pumps provide enough power to keep everyone satisfied.

The 65 hydro-therapy massage jets can be combined in unlimited combinations and degrees to suit every taste from the gentlest soft touch caress to firm deep muscle massaging power.



# Swim Spas

## Looking for an exercise pool and a hot tub

The therapeutic benefits of regular exercise are well known and swimming is one of the most fun and fulfilling ways to get the whole family fitter and more active.

Owning a Swim Spa includes all the comforts and benefits of a swimming pool and a spa all in one unit.



*Ideal for learning how to swim*



*Perfect for exercise and practice*

## The ultimate aqua therapy and workout ...the Swim Spa



### 200 sq ft Microban® Filtration

Increase the cleaning power of your spa with a Canadian Spa Company Microban® spa filter! The Microban® antimicrobial protection to inhibit the growth of bacteria upon the cartridge and extend the filter's life cycle. Spend less time cleaning your filters and more time enjoying your spa!



### Galvanised steel frame

Sturdy galvanised steel frame cradle for supporting the swim spa



### Raised floor

Raised floor at the spa end ensures comfortable and secure seating



### Easy maintenance

Canadian Spa Company Swim Spas are ready all year round and are easier to maintain than an ordinary swimming pool



### Swim Trainer

Resistance bar and harness for a rigorous workout used by the best swimmers in the world



### Powerful Swim lane jets

Current River jets delivers a powerful continuous stream of water to aid straight and level swim



### Music & Lighting

MP3 enabled music system with Pop up LED Illuminated speakers and premium waterfall and perimeter lighting



### Build quality

We build spas with the best components. Our spa shell uses Lucite for strength and durability to withstand frequent use



# Swim Spas

## St Lawrence 13' Sport Pool



Our new sport pool offers you the very best in aqua fitness. The unique jet system provides controllable resistance for swimming and aqua aerobics.

Relax and enjoy one of five therapeutic areas including our stand-up massage.

The spa features:

- 3 x 5HP pumps
- 2 waterfalls
- Ozone
- 200 sq ft filter
- LED lighting system
- Galvanised steel frame
- 2-part hard top cover swim training pole



 4 Seats	 0 Lounger	 1387 gal 5250 L Capacity	 39 Jets	 i-Pod MP3 Audio System	 200 ft <sup>2</sup> Filter Size	 3/5.5 kW Heater	 154" x 90" x 54" 390 x 230 x 140 cm Dimensions	 2200 lb 998 kg Ship Weight	 Ozone installed	 Waterfall	 Aromatherapy
--	---	--	--	--	--	---	--	--	---	---	--

# Swim Spas



## St Lawrence 16' swim spa

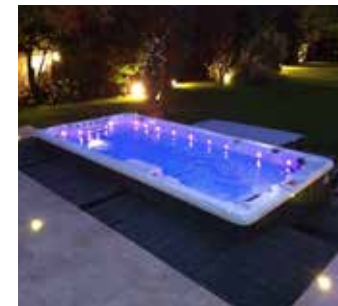


### Unique swim lane system

The St. Lawrence swim spa is a swimmer's delight. Our unique Swim Lane System is created using 3 resistance jets and 2 profile-aligning jets to ensure that you receive the appropriate pressure and support that you need for your exercise. The Swim Spa is powered by 4 x 5HP pumps.

One of the main problems that experienced swimmers encounter is the challenge of staying in their lane. Any differences in side strength and stroke patterns create a tendency to "pull" to one side or the other. Our Swim Lane System is completely customisable to adjust to anyone's swim pattern and keeps you centred in the swim lane. The 16 ft. St. Lawrence has 6 seats and a full-length lounger to maximize the spa massage benefits.

This system provides not only muscle development but also muscle repair. After a good swim enjoy a soothing massage in one of the two multi-jet Captain's Chairs.





# Swim Spas

## St Lawrence 20' Dual Zone Swim Spa & Hot Tub

### Fully-featured, luxury combined swim spa and hot tub

Canadian Spa offer the best of both worlds with this 13' swim spa and all the benefits of a 7' premium hot tub

This swim spa is for serious swimmers, who want to train in the water temperature that they will compete in. Excellent for triathletes, competitive swimmers, customers looking to achieve a pool and spa in a compact area

The dual zone system allows you to control the temperature in each zone. For competitive swimming in both standard competition and the Olympics.

After a great workout Relax in the hot soothing 5 x 5 HP pumps, full feature spa is ready to enjoy.





# Portable Spas

## Why Choose Canadian Spa Company portable spa?

Over 35 years' experience in building the best hot tubs in the world. We are focused on spas and it shows in our design and function of our products. We focused on providing a well-insulated product that can be used year round, heats quicker and is deep enough to cover your neck and shoulders. Our control systems uses a heat jacket design so that the heater element never touches the water. The advantage of this is no scaling of the electric heater and a safer product. We supply a full range of accessories including spa specific chemicals, Reemay filters, steps and spa surround to enhance your use of our spas. Lastly we provide the best aftercare and customer service in the industry.



### Portable spas benefits:

- Assemble in 15 minutes: Assembly requires no tools and can be completed in just 15 minutes
- Truly portable: A unique transportable design allows these spas to be placed virtually anywhere.
- Plugs into a normal socket: A Canadian Spa Company 'Plug & Play' hot tub means that no additional electrical installation is required to set up your spa.
- Simple to operate: Our portable spa control system houses the pump and blower in a compact unit for ease of operation. The control unit allows you to set the temperature, operates the jets and the filtration.



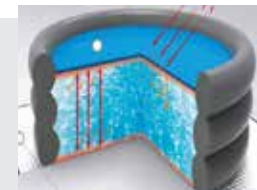
## Better insulated Spas = Lower Cost

### Cost savings calculation:

Save energy & money every day compared to the competition. Basic electric cost 2.00 a day less our energy saving features make our spa the best choice when you consider your buying and operating costs.

Operating cost savings calculation:	Canadian Spa	Brand Intx	Brand Bstwy
• Basic cost	2.00 per day	2.00 per day	2.00 per day
• Thermal blanket	-.30	no	no
• Insulated walls/foam bottom	-.50	no	no
• Hard top cover	-.70	no	no
<b>Total cost per year</b>	<b>182.50*</b>	<b>730.00*</b>	<b>730.00*</b>

*\* This is based on .10 per Kw with ambient temp of 50F or 10C. Savings may vary due to use and ambient temperature*



Save up to  
**550.00**  
per year\*  
in electrical savings  
with Canadian Spa  
Portable Spas

# Portable spas

## Muskoka spa...

insulated  
synthetic  
wood with  
Laminated  
Liner



### Technical Specification:

Seating capacity:	5-6 adults
Water capacity:	1500L / 396 US gal
Dimensions:	188 cm x 73 cm (74 in x 27 in)
Number of air jets:	130
Power rated:	115V, 60Hz 15 Amp with GFCI (N.A.) 240V, 50Hz 13 Amp with RCD (Europe)
Heater:	1340W (N.A.), 1940W (Europe)
Massage Pump	Air blower 500 W
Power cable length:	4.5m / 15 feet
Filter Pump:	AC 12V / 60W 2300L / 600 gal / H
Top lid:	Tapered Hard top cover + locking straps



**Includes:** • GFCI/RCD protected cable • Control unit • Filter • Hard top Cover

## The Grand Rapids...

inflatable bladder  
with cover spa

Ideal for positioning on  
a garden patio or taking  
with you to a holiday cottage.

Our spa also comes with a 6"  
inflatable cover that is tapered  
and lockable  
for insulation  
and security.



### Technical Specification:

Seating capacity:	4
Water capacity:	800L / 211 US gal
Outer spa diameter:	70" x 29" (180cm x 74cm)
Inner spa diameter:	55" (140 cm)
Depth without Cover:	74 cm / 29" + cover 76cm / 30"
Number of air jets:	88
Power rated:	115V, 60Hz 15 Amp with GFCI (N.A.), 240V, 50Hz 13 Amp with RCD (Europe)
Heater:	1340W (N.A.), 1940W (Europe)
Massage pump:	500W
Power cable length:	4.5m / 15 feet
Filter Pump:	AC 12V / 60W 2300L / 600 gal / H
Top lid:	6" Cover with locking straps



**Includes:** Thermal blanket • GFCI/RCD protected cable • Control unit • 6" Inflatable lid with straps • Filter

# Portable Spas

## The Rio Grande... 'iR-chamber' wall with liner spa

The Rio Grande easy to inflate 'i chamber' wall and a laminated liner delivers increased strength and improved look and feel to the spa. This sturdy spa features a padded thermal base and comes with a 6" inflatable cover for added insulation.



The Canadian Spa Company 4-person inflatable Rio Grande hot tub will have you relieved of everyday stress and tension. Adults will enjoy a full massage as they completely submerge their neck and shoulders in this extra deep 29" model with its 88 air jets.

The Rio Grande's spa wall is constructed using a contour I-Beam structure, making it safer and more rigid than standard inflatable models. Its reinforced vinyl liner and 6" thick inflatable cover keeps your hot tub protected and insulated year-round.

The Rio Grande's unique transportable design makes it the perfect addition to any home, cottage, or party.

The Rio Grande plugs directly into any standard outlet so no electrician is required. Just plug & play! A portable control unit located outside the spa houses the water filtration system, massage pump, and heater, allowing quick external access for trouble-free maintenance.

### Technical Specification:

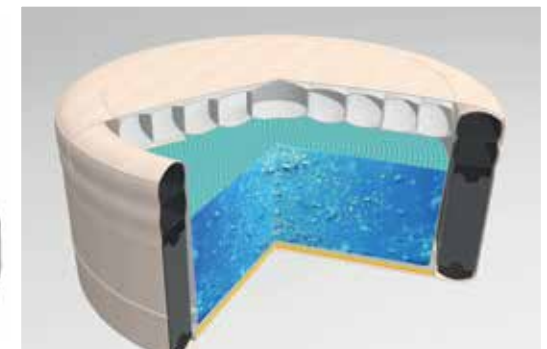
Seating capacity:	4
Water capacity:	820L / 217 US gal
Outer spa diameter:	70" x 29" (180cm x 74cm)
Inner spa diameter:	55" (140 cm)
Depth without Cover:	74 cm / 29" With cover 76cm / 30"
Number of air jets:	88
Power rated:	115V, 60Hz 15 Amp with GFCI (N.A.), 240V, 50Hz 13 Amp with RCD (Europe)
Heater:	1340W (N.A.), 1940W (Europe)
Massage pump:	500W
Power cable length:	4.5m / 15 feet
Filter Pump:	AC 12V / 60W 1136L / 300 gal / H
Top lid:	6" Cover with locking straps



**Includes:** Thermal blanket • GFCI/RCD protected cable • Control unit • 6" Inflatable lid with straps • Filter



*Inflatable cover for better spa insulation*



*Superior strength iR inflatable spa with durable laminated liner*



# Portable spas

## The Swift Current...insulated foam wall & Liner spa

Insulated foam wall 5 person portable spa hot tub is the deepest spa in the market. Totally submerge your shoulders and neck for a full massage. Our spa also comes with a tough and durable laminated vinyl liner and a 6" inflatable cover that is tapered and lockable for insulation and security.



### Technical Specification:

Seating capacity:	5
Water capacity:	1000L / 264 US gal
Outer spa diameter:	73" x 29" (184cm x 74cm)
Inner spa diameter:	63" (160 cm)
Depth without Cover:	74cm / 29" With cover 89cm / 35"
Number of air jets:	88
Power rated:	115V, 60Hz 15 Amp with GFCI (N.A), 240V, 50Hz 13 Amp with RCD (Europe)
Heater:	1340W (N.A.), 1940W (Europe)
Massage pump:	500W
Power cable length:	4.5m / 15 feet
Filter Pump:	AC 12V / 60W2300L / 600 gal / H
Top lid:	6" Cover with locking straps



### Includes:

Thermal blanket • GFCI/RCD protected cable • Control unit • 6" Inflatable lid with straps • Filter



# Spa Surround furniture

## Spa Surround for spas

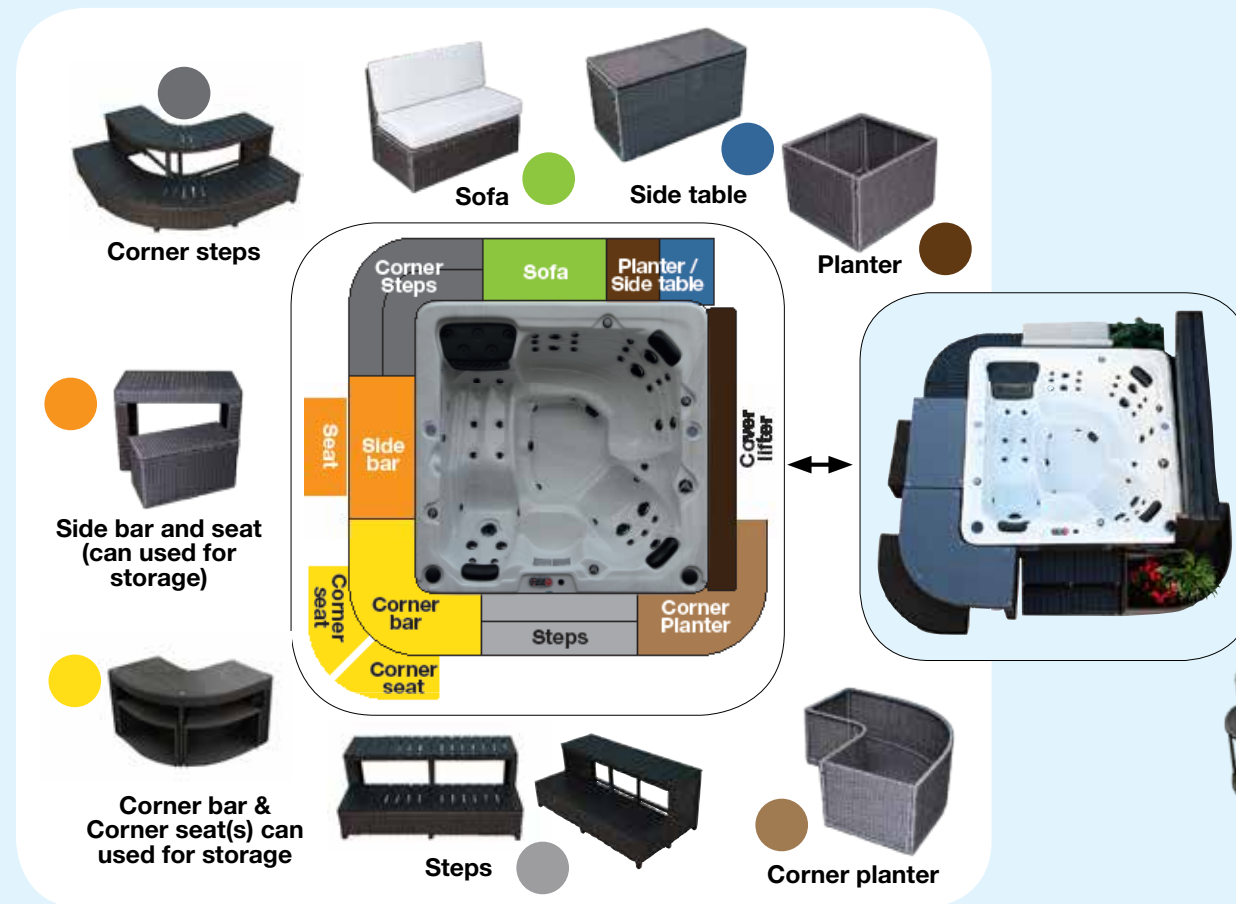
Our versatile modular spa furniture range has something to offer for everyone who wants to design their own spa surround.

Use combinations to personalise your own wellness centre from shape to feel with the Canadian Spa modular furniture option.

Canadian Spa range of spa furniture includes sofa, step, side table also can be used as a stool, planter and a glass top bar. All items are made of weather-proof synthetic Rattan material.



Hot tub with hard top cover and Spa Surround



# Spa Surround furniture

This sturdy furniture is made with synthetic Rattan designed to withstand all weather conditions.

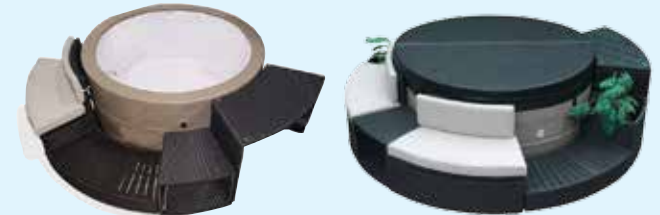
The furniture items are lightweight and can be moved easily around the hot tub in order to create the desired look.

The bar feature have seats that can be conveniently stowed under the bar(s). These can also be used to store towels, swimwear and shoes.

You can also add a cushioned sofa for extra comfort.

Enhance your garden hot tub by positioning corner and side planters filled with your favourite scented scrubs or exotic plants.

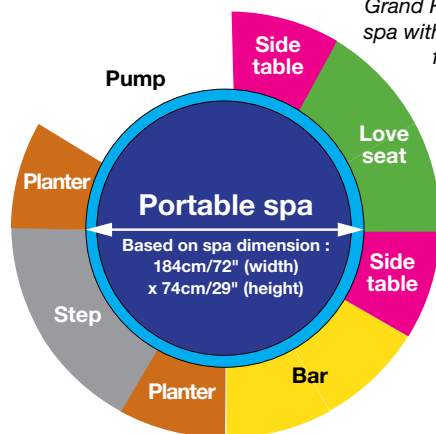
Add multiple steps around the hot tub to allow easier all round access to the spa.



*Swift Current portable hot tub with surround furniture and with hard top cover*



*Grand Rapids portable spa with Spa Surround furniture*



**Sofa**



**Steps**



**Bar**



**Planter**



**Side table (or stool)**



*Ottawa round acrylic hot tub, perfect for any garden landscape.*

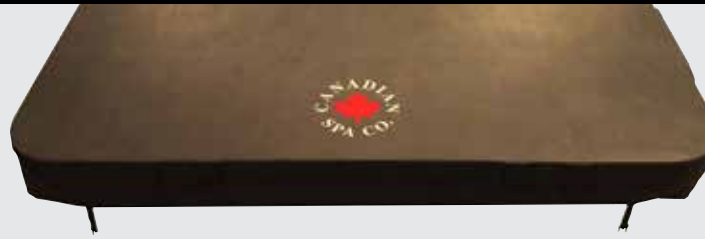


## **Modular spa furniture system:**

Allows customers to select items and configure their spa furniture personally.



# Covers / Cap Covers



*Round Top Cover available as an optional extra for the Swift Current Portable Spa*

## Proudly made and assembled in our factories

- 5"- 3" tapered 1.5 lb density foam cover for unparalleled heat retention and strength. All covers are a full 5" thick at the fold and taper to 3". This tapered design allows for added strength at the hinge and run off.
- 100% virgin, 1.5 lb density, EPS Styrofoam inserts wrapped in a 6 mil double coated, heat sealed polyethylene vapour barrier to increase the longevity of the cover and retain water temperature. For additional support, a galvanized "C" channel is added at the centre of each foam insert.
- UV and mildew resistant 30oz marine grade vinyl. Available in Walnut or Charcoal colours.
- Extra-thick, full length hinge seal runs the entire length of the fold to minimize heat loss.
- Dabond bonded polyester chlorine and bromine resistant marine thread is used throughout the entire cover for superior strength. All high stress areas of the cover are reinforced with Dabond stitching paying extra attention to the hinge, handles, tie downs and skirt.
- Six (6) re-enforced, thick vinyl handles. All six handles are located at points convenient for carrying your spa cover and are recessed and re-enforced using the same vinyl to perfectly match the cover.
- Commercial quality YKK zippers are tucked away inside the hinge for easy access to the inside of the cover.
- Double coated solid vinyl laminate under-liner protects the underside of the spa cover from harsh chemicals and heat.



## Cap covers (cover protection)



### Square & round cap covers

- Protect your cover from snow & ice
- Save energy & help retain heat loss
- Waterproof tough and durable
- Prevent cover colour bleaching
- Resists UV damage
- Protect from tree sap
- Square size(s): 8' x 8' and 7' x 7'
- Round size: 7' x 7' diameter

## Cover lifters

Using a cover lifter makes spa cover removal and replacement a quick, one-handed operation while reducing wear and tear on your hot tub cover.

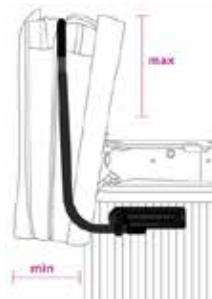
### Benefits include:

- No more struggling with heavy covers
- Protects your spa cover by off the ground and dirt free.
- Extends cover life and efficiency
- No more storage issues



### Bottom mount cover lifter

- Brackets made of tough ABS
- Foot assist eliminates the need for expensive hydraulic shocks
- Mounts directly to the spa
- Bars made of black powder-coated aluminium
- Fits up to 2.4m (95") wide Spas
- Requires 45cm (17") clearance



### Top mount cover lifter

- Brackets made of tough ABS
- Mounts directly to the spa
- Towel Hook included
- Lifting bars made of black powder coated aluminium
- Fits up to 2.3m (94") wide Spas
- Requires 30cm (12") clearance



### Universal mount cover lifter

Power lift assist - the only cover removal system with an enclosed adjustable spring mechanism for effortless cover removal.

- Mounts directly to the spa or deck
- Adjustable spring loaded
- Made of aluminium
- Fits up to 2.4m (96") wide spas
- Requires 25.4cm 10" - 20" clearance



# Gazebos

## Fraser Gazebo

Gazebos can create a safe, warm environment so that you can enjoy your spa all year round! Complete the package and turn your home and garden into a home resort with our 'no maintenance' Fraser synthetic Gazebo and accessories.



### Features:

- ABS roof
- Two louvred sides
- Skylight
- Rounded corners
- Easy assembly
- Bar
- 10' x 10' x 10'  
(305 x 305 x 295 cm)

### Optional:

- 4 stools





# Accessories

## Filters



**Portable spa filter 3 Pack + FREE bonus filter 3 x 15 ft² slip replacement filters for Canadian Spa Company Portable spas.**



**100 ft² 'Fresh Water' pack + 2 Pre-Filters (Microban Silver ION)**  
Designed for Canadian Spa 'Grate' type filters.



**Spa ball:** Acts like a sponge to absorb oil and other residue from the surface of the spa

## Portable Spa Chemical Kit



## Chemical Kit & Deluxe Chemical Kit

- Chlorine Granules
- Alkalinity Booster
- Test Strips
- PH up & PH Down
- Spa Shock
- Foam Free
- Spa Clear
- Scale Control



**Water filled booster seat:**  
for added comfort and great for small children



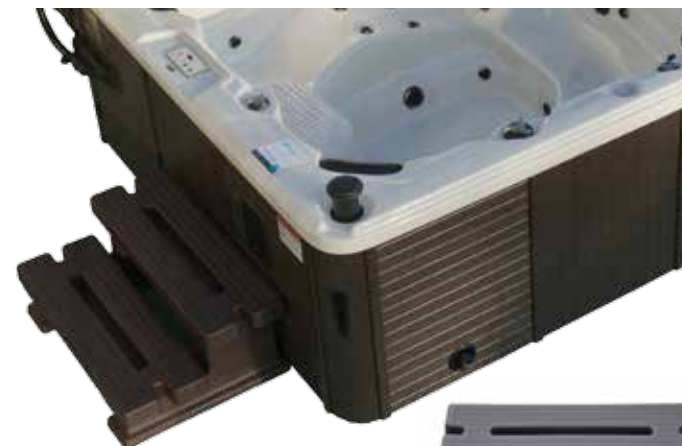
**Spa Vacuum:**  
Removes grit and debris from your spa



**Aromatherapy:**  
Just add some aromatherapy crystals of your favourite scent and place them inside the aromatherapy basket

## Steps (Coffee or Charcoal)

- Easy assembly
- Fade resistant
- Lightweight and durable
- Assembled size: 89 x 60 x 35 cm (35" x 24" x 14")



## Universal Steps (Black)

- Easy assembly
- Can be used against both 'round or straight' sided spas
- Assembled size: 72 x 57 x 36 cm (29" x 22" x 14")



# Pre-delivery Guide

## Delivering your Canadian Spa

### CHOOSE YOUR LOCATION

When thinking about where to position your hot tub, you should consider:

- The view from the house to the spa, and the view from the spa itself.
- Ensure quick and easy access from your house to the spa.
- Direction of drainage. Water should always drain away from the spa. Do not locate your spa in a low run-off area – rain water could flood the area and cause pump and equipment damage.
- If you are installing the spa within a deck, the entire spa base must be sitting directly on the prepared base. The lip of the shell must not support any weight.
- **IMPORTANT:** The minimum clearance for entry to the spa's access panel for servicing is 1 metre.
- The spa should not be located near or under overhead wires and must be kept clear of all electrical appliances.

### PLANNING PERMISSION

Under normal circumstances planning permission is not required, but we recommend consulting your local planning office prior to purchase.

### PRE-DELIVERY PREPARATION

- The site you select for your spa must be a flat surface that contacts the bottom of your spa completely.
- Spas weigh between 900kg and 1,400kg when full, therefore a solid support is essential. A 4-6" (10-15cm) thick reinforced concrete slab is ideal, but not a requirement. In most cases your spa can be placed on a properly fitted existing patio. Your spa can be mounted on a deck, but it must be of solid construction. Either way, it is recommended you install your spa at ground level to allow easy internal access.
- The base needs to be at least the same size as the footprint of your spa
- The power supplied must be a dedicated RCD protected circuit. You will need to get a qualified electrician to undertake this work (check spa for Amp requirement).
- Plug and play models plug directly into a 13 Amp socket.

## Positioning of your spa

When selecting a site for your spa, take into account the following:

### Local Codes:

There may be certain restrictions and/or requirements that are particular to your locality. If in doubt, check with your local council.



### Delivery Passageway:

The spa will arrive as a unit, and cannot be disassembled. Ideally the spa will be placed on a trolley, either on its side or on its base. The unit will then be rolled into place easily crossing grass, gravel, and small terrain anomalies. For safe and non-intrusive installation, we require an opening not less than the size of your spa plus at least 16" height for the trolley and a minimum of 2" clearance on each side. If your access does not meet these conditions, or in the case of other obstacles (steps, fences, walls, steep hills, etc.) contact Canadian Spa Company for advice and conditions.

### Location & Base:

A sheltered environment can result in lower operating and maintenance costs. You must allow 1 metre clearance for access to the spa's access panel for servicing.

## Setting up your hot tub/spa

A hot tub is a fully integrated unit; all you need is a flat, level spot, an electrical line and water from your garden hose. Even though it's not essential, we recommend that you have a cement pad prepared prior to delivery in order to support your hot tub.

**Please note:** We do not recommend placing a hot tub directly on unprepared ground.

### FILLING YOUR HOT TUB

Once you have installed your spa, your next step is to fill it up with water for heating. We recommend that you fill up your spa by placing a garden hose inside the filter housing. Be sure to use cold water to fill up your spa because warm water can cause the temperature sensors to malfunction.

### UNDERSTANDING YOUR FILTRATION SYSTEM

Your Canadian Spa hot tub is a self-contained unit that does not require a dedicated water connection and will automatically filtrate the water without any need for user interaction. By default the filtration cycle will run for 4 hours every 12 hours and will cause your pump to run in low speed mode to circulate the water. During this phase the water is drawn in through the filter to catch large debris and then injected with ozone gas to help remove any harmful bacteria.

### HOT TUB PLACEMENT

Your local building surveyor will give you the requirements for proper support of your hot tub on a wood deck. The average sized hot tub filled with water can weigh more than the car in your driveway. It must be supported properly to ensure a safe and reliable installation.

We recommend that you install your hot tub outside on a concrete pad. But if you do decide to install it in the home, ensure that your contractor provides proper ventilation according to your local building code. If you sink the spa into decking make sure you can remove the side panels in order to gain access to the spa's inner working parts in the event you need to replace components.

### PLAN YOUR PRIVACY

Look at the direction you will be facing, from neighboring windows, doors, trees or fences. Your hot tub location is very important to optimise your soaking and provide a relaxing environment for you and your family.



# Warranty

## LIMITED WARRANTY

Canadian Spa Co. Manufacturing extends the following warranties to the original purchasers of its portable acrylic spas:

**Structural Warranty:** Canadian Spa Co. warrants structure of the spa shell against water loss due to structural failure for the period of 25 years from the date of purchase by the original owner.

If in Canadian Spa Co. opinion, structure proves to be defective Canadian Spa Co. will repair or, at its option, replace the defective structure without charge to the customer.

**Surface Warranty:** Canadian Spa Co. warrants the acrylic finish against defects in material and workmanship and specifically against blistering, cracking or delamination for the period of two (2) years from the original purchase date to the original purchaser.

In Canadian Spa Co. opinion, the surface proves to be defective during this period, Canadian Spa Co. will repair or, at its option, replace the defective spa shell without charge to the customer.

**Plumbing Warranty:** Canadian Spa Co. warrants the plumbing of the spa will remain free from leaks for the period of two (2) years from the date of purchase to the original purchaser.

**Equipment Warranty:** Canadian Spa Co. warrants the equipment pack (pump, blowers, heater, and control system) against malfunction and defects in the materials and workmanship for two (2) years from the date of purchase to the original purchaser.

**Skirting Warranty:** Canadian Spa Co. warrants the wood skirting surrounding the spa to be free from defects in materials and workmanship at the time of purchase. Because wood is a natural product and subject to weathering, any fading, crazing, cracking or warping of the wood finish is not covered. Synthetic skirting may also have the same weathering all be it much slower.

**Extent of Warranty:** This Limited Warranty applies to portable spas manufactured after January 1st 2016 and sold by authorised Canadian Spa Co. dealers to residential retail customers.

**Inflatable, rigid-walled and foam-walled portable spas:** Limited warranty is covered for a period of one (1) year on plumbing, equipment and vinyl liner on the following models: Grand Rapids, Rio Grande, Swift Current and Muskoka.

This Limited Warranty is given only to the first retail purchaser and terminates upon transfer of ownership. No warranty is provided on light bulbs, light lens covers, filters, audio equipment or any dealer installed accessories. Cost of installation, removal and/or shipping of the spa is not covered by this Limited Warranty. In the event Canadian Spa Co. deems

necessary the removal of the spa to a place of repair or that the spa must be replaced, any and all costs of the spa removal and replacement; landscaping, decking, fencing and/or structure removal, alteration and/or replacement; or other costs of providing access to the spa will be for the purchaser. This Warranty applies only to spas in single family, residential installations. This Limited Warranty becomes void if the spa is placed in commercial application.

## TERMS, CONDITIONS AND LIMITATIONS

Any defect or damage caused by installation, alteration or repair by anyone who is not an employee of Canadian Spa Co. or authorised service technician is not covered by the Warranty. This Warranty becomes void if the spa has been subjected to misuse, abuse, alteration or attempted alteration, repairs or attempted repairs by anyone other than an authorised Canadian Spa Co. service technician, improper installation, improper water chemistry, improper maintenance, acts of god, or damage caused beyond the control of Canadian Spa Co. Misuse and abuse shall include any operation of the spas other than as directed in the Canadian Spa Co. Manual.

Examples of misuse and abuse include, without limitation:

- Damage of the spa surface caused by leaving the spa uncovered while the spa is empty of water or due to covering the spa with plastic film of any kind.
- Damage to the spa surface caused by contact with cleaners or solvents.
- Damage caused by the operation of the spas at water temperatures outside of the range of 1 – 40 degrees Celsius.
- Damage caused by unapproved sanitiser such as Calcium Hypochlorite, Tri-chlor type chlorine or any sanitising chemical that may remain undissolved on the spa surface.
- Damage caused by failure to provide even sufficient support for the spa.

**Warranty Performance:** In the event of a defect covered under the terms of this Limited Warranty, notify your authorised Canadian Spa Co. dealer. A Canadian Spa Co. authorised service technician will repair the spa subject to the Terms and Conditions of this Limited Warranty. Use all reasonable means to protect the spa from further damage. Reasonable travel charges may be assessed by Canadian Spa Co. or its authorised service technician if the spa is located outside the nearest authorised service technician's service area.

This warranty covers parts ONLY and does not include travel or on-site service charges unless a Service Contract has been purchased from Canadian Spa Co. Ltd.

**Disclaimers:** Canadian Spa Co. or any of its authorised service technicians shall not be held liable for injury, inconvenience, loss of use, chemical or water damage, transportation costs, content liabilities or any other incidental or consequential costs, expenses or damage as result of any deficiency or alleged deficiency of the spa.

In no event shall Canadian Spa Co. be liable, for any reason or cause, in excess of the amount paid for the product. No other warranties, expressed or implied, are valid. No agent, dealer, distributor, Service Company or other party is authorised to change, modify or extend the terms of this Limited Warranty in any manner whatsoever.

All products are subject to the Sales of Goods Act 1979.

## Canadian Spa Co. Manufacturing extends the following warranties to the original purchasers of its portable spas:

**Vinyl Warranty:** Canadian Spa Co. warrants the vinyl finish against defects in material and workmanship and specifically against blistering, cracking or delamination for the period of One (1) year from the original purchase date to the original purchaser. If, in Canadian Spa Co. opinion, the vinyl proves to be defective during this period, Canadian Spa Co. will repair or, at its option, replace the defective spa bladder without charge to the customer.

**Plumbing Warranty:** Canadian Spa Co. warrants the plumbing of the spa will remain free from leaks for the period of one (1) year from the date of purchase to the original purchaser.

**Equipment Warranty:** Canadian Spa Co. warrants the equipment pack (pump, blowers, heater, and control system) against malfunction and defects the materials and workmanship for one (1) year from the date of purchase to the original purchaser.

**Extent of Warranty:** This Limited Warranty applies to portable spas manufactured after January 1 2016 and sold by authorized Canadian Spa Co. dealers to residential retail customers. This Limited Warranty is given only to the first retail purchaser and terminates upon transfer of ownership. No warranty is provided on filters or any dealer installed accessories. Cost of installation, removal and/or shipping of the spa is not covered by this Limited Warranty. In the event Canadian Spa Co. deems necessary the removal of the spa to a place of repair or that the spa must be replaced, any and all costs of the spa removal and replacement; landscaping, decking, fencing and/or structure removal, alteration and/or replacement; or other costs of providing access to the spa will be for the purchaser.

This Warranty applies only to spas in single family, residential installations. This Limited Warranty becomes void if the spa is placed in commercial application or hire.



Please register your warranty at  
[www.canadianspacompany.com](http://www.canadianspacompany.com)





- Our vision is to continue being a caring, viable community-driven company
- We improve our customers quality of life by delivering a unique product and outstanding customer care
- Our pride of reputation ensures peace of mind and continuous commitment to our customers

**European Head Office:**

Canadian Spa Company  
Canada House  
Salbrook Road  
Salfords, Redhill  
Surrey, RH1 5GL  
T: +44 1293 824094  
[www.canadianspacompany.co.uk](http://www.canadianspacompany.co.uk)

**Vancouver Warehouse:**

Canadian Spa Company  
10118 Swenson way  
Delta, BC, V4G 1J4  
T: 1-877-347-7727  
Fax: +1 (905) 825 2513  
[www.canadianspacompany.ca](http://www.canadianspacompany.ca)

**North America Head Office:**

Canadian Spa Company  
2-3620B Laird Rd  
Mississauga, ON L5L 6A9  
T: 1-877-347-7727  
T: 1-905-820-7727  
Fax: +1 (905) 825 2513  
[www.canadianspacompany.ca](http://www.canadianspacompany.ca)

**Dubai Office:**

Canadian Spa Company  
P. O. Box 26455  
Dubai, UAE  
Tel : 009714 - 8815223  
Fax: 009714 - 8815224  
[www.canadianspacompany.com](http://www.canadianspacompany.com)

**Canadian Spa Company LLC**

**US Office (Mailing Address):**  
150 S 8th St, PO Box 420  
Lewiston, NY 14092-0420, USA  
Tel: 1 877 347 7727 toll free  
[www.canadianspacompany.com](http://www.canadianspacompany.com)

**Canadian Spa Company LLC**

**US Office (Warehouse):**  
1457 Glenn Curtiss St.  
Carson, CA 90746, USA  
Tel: 1 877 347 7727 toll free  
[www.canadianspacompany.com](http://www.canadianspacompany.com)

**France Office:**

Canadian Spa Company sarl  
29 avenue de Grande Bretagne  
66000 Perpignan  
France  
T: +33 9970 4448004  
E: [support@canadianspacompany.com](mailto:support@canadianspacompany.com)  
[www.canadianspacompany.com](http://www.canadianspacompany.com)

**German Office:**

Canadian Spa GmbH  
Lützerathstrasse 127  
51107 Köln  
T: 0049-221- 94655344  
F: 0049-221- 94655342  
E: [mark@canadian-whirlpools.de](mailto:mark@canadian-whirlpools.de)  
[www.canadianspacompany.de](http://www.canadianspacompany.de)

**Sweden Office:**

SbaoBad i Sverige AB  
Munkarp 601  
24391 Höör  
Sweden  
Tel : +46413400400  
[www.canadianspacompany.com](http://www.canadianspacompany.com)

**Asia Office:**

Canadian Spa Company  
Beihai Road  
Haian County  
Jiangsu  
China  
[www.canadianspacompany.com](http://www.canadianspacompany.com)



[www.canadianspacompany.com](http://www.canadianspacompany.com)



Canadian Spa Company meets ISO 9001 Standards  
When you purchase a hot tub from Canadian Spa Company, the ISO 9001 certification assures world class excellence in manufacturing and customer service. 19/04/16