

bullfrog
spas





bullfrog
SPORTS



PERSONAL SPAS

PERFECTED

Occasionally a product design comes along that is so uniquely matched to its purpose that you must say – this is perfect.

The all new Bullfrog Spas combine the patented JetPak Therapy System™, cutting-edge engineering, daring design, comfort and unmatched quality. The result: the personal spa, perfected.

Discover how Bullfrog Spas is engineering your perfect spa experience.

GET FIT...



JETPAK THERAPY SYSTEM™

You deserve the best spa experience, and that means a spa that is personalized just for you.

Bullfrog Spas created the JetPak Therapy System to allow you to fit your spa to your body and lifestyle. Only Bullfrog Spas let you select your perfect massages, move them from seat to seat, and upgrade at any time.

HEALTH





FITNESS

PERFECTED

It's a fact, regular exercise is necessary to maintain your health. Nothing supports the achievement of fitness goals better than your personalized Bullfrog Spa.

Your Bullfrog Spa allows you to select specific JetPak massages to help you to stay loose and pain free. Your recovery times will be shorter while energy levels and performance are enhanced.





WELLNESS

PERFECTED

Wellness is more than just being healthy; it includes staying balanced, relaxed, active and being happy with your life.

Your Bullfrog Spa supports this balanced approach to life and wellness. Daily spa time with your choice of soothing JetPak massages will help you stay stress free, energized, healthy and happy.

HEALTH



CLOUDCONTROL™



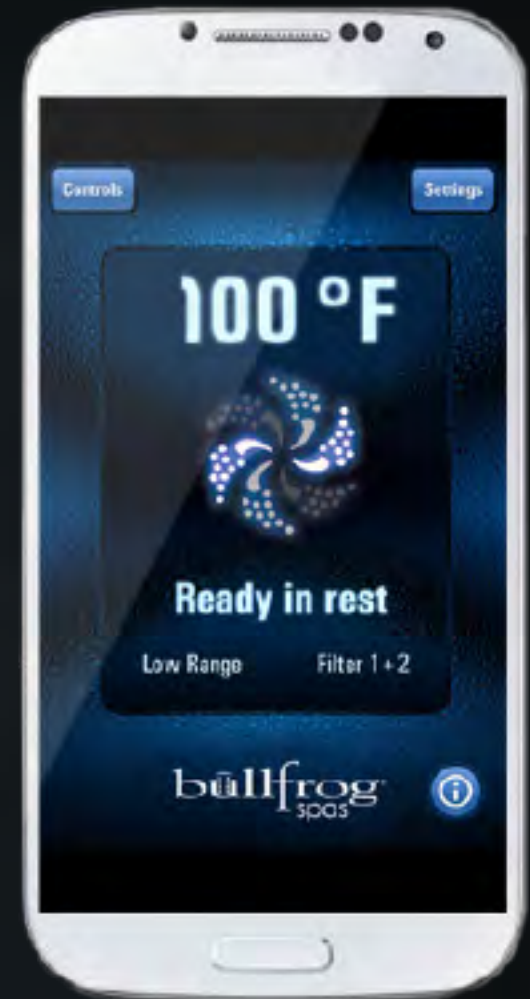
EVERYWHERE...

CONTROL & MONITOR

With Bullfrog Spas' exclusive CloudControl app you can control and monitor your spa from anywhere with your smartphone or app-enabled device. Adjust settings from the comfort of your living room. Check on your spa while on vacation. Dial up the perfect temperature from work.

Spa ownership is now easier than ever.

ANYWHERE...



*CloudControl WiFi module optional on A & R Series spas. Standard data rates apply. Subscription cloud service free during first year of ownership.

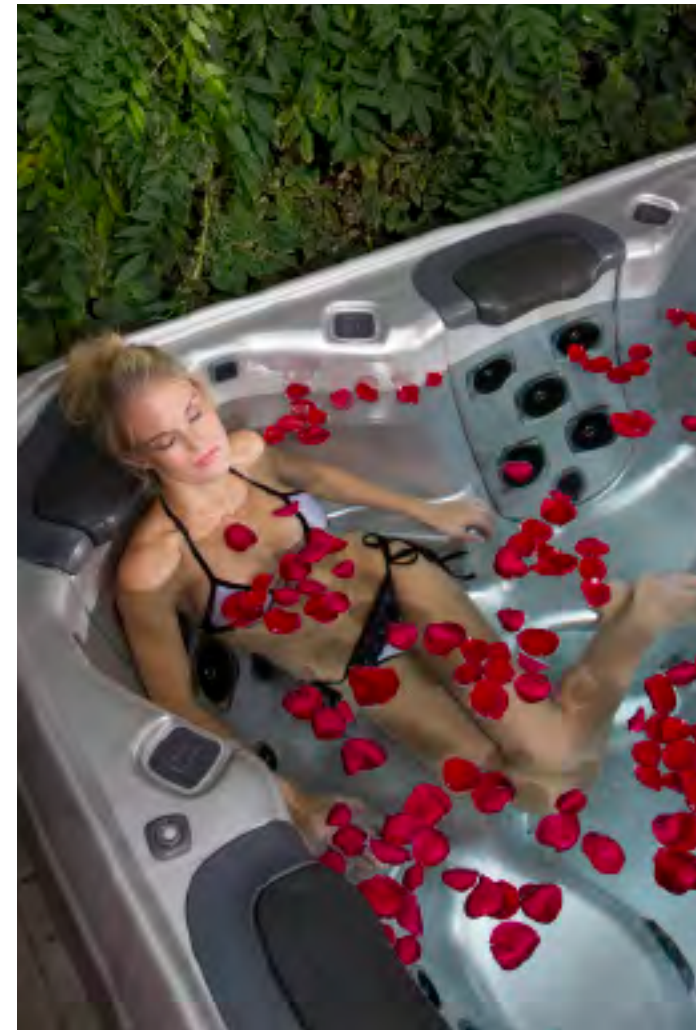


ESCAPE

RELAXATION PERFECTED

We all need a little time for ourselves, time to slow down, time to unwind, and time to simply relax.

In just a few minutes a day you can make deep relaxation a reality in your own home spa. You are empowered to choose the JetPak massages that feel best. Your relaxation experience is completely personalized.



ESCAPE

LUXURY --- PERFECTED



The stunning design of your Bullfrog Spa creates a beautiful environment. Sync your favorite music to the premium sound system and set your lighting for just the right mood. Add a few candles, your favorite aroma salts, and a gentle massage.

This is your private spa paradise, luxury perfected.



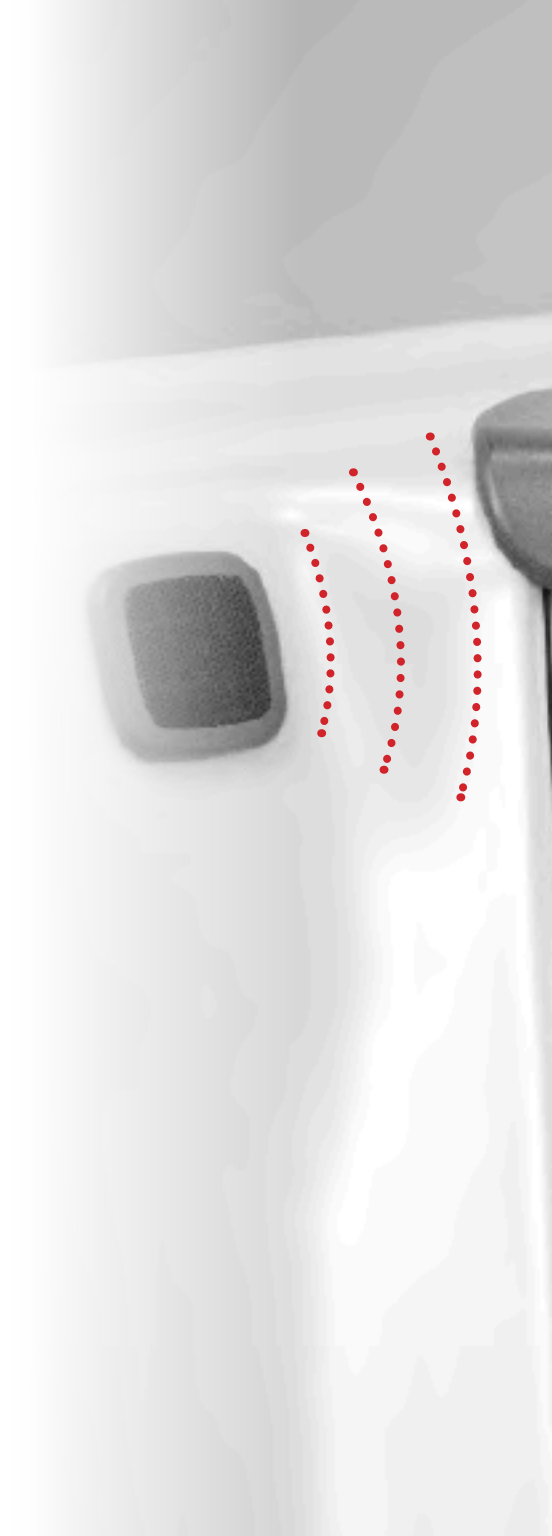
SOOTHING SOUND

Relaxation, therapy, and good times are all enhanced by your soundtrack.

Bullfrog Spas' optional Elite Audio System includes seat surround speakers and a powered sub-woofer to immerse you with rich high-quality sound. Protect and charge your iPod, iPhone, or other digital music player right in the spa-side water-proof housing. Or, simply connect via Bluetooth and stream your favorite playlists.



Also Available - Life Audio System. See dealer for specifications and details.







RELATIONSHIPS

ROMANCE

PERFECTED

Remove yourselves from everyday distractions and allow time for true communication and a stronger connection. Your relationship will be strengthened as you relax.

Fresh air, swirling jets, romantic mood lighting, soft music, and aroma-therapy combine to create a romantic spa retreat without ever leaving your own backyard.

Quality time in your Bullfrog Spa will help you remember why you fell in love.



RELATIONSHIPS

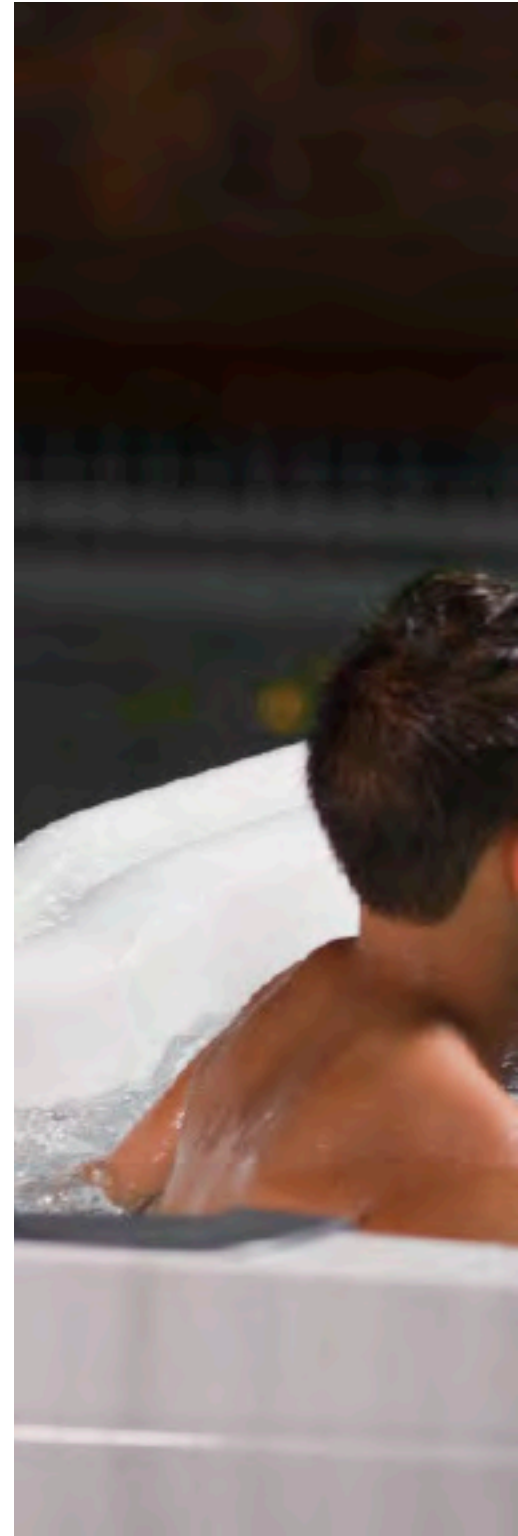
FAMILY TIME

PERFECTED

Your family will absolutely love your new Bullfrog Spa.

Every member of your family can choose their own personalized massage. Mom can escape with a soothing RainShower JetPak. Dad will love the powerful therapy of the DeepRelief JetPak. And kids will love playing in the Cascadia waterfall.

Your children will open up in conversation and all ages will absolutely love the relaxation, quality time, and memories.







The image features a dark, almost black background. On the left side, there are blurred, out-of-focus mechanical components, possibly parts of a car or industrial machinery, in shades of grey and blue. The main focus is the text at the bottom.

PERFECTION THROUGH ENGINEERING

JETPAK THERAPY SYSTEM



0

..... PLUMBING

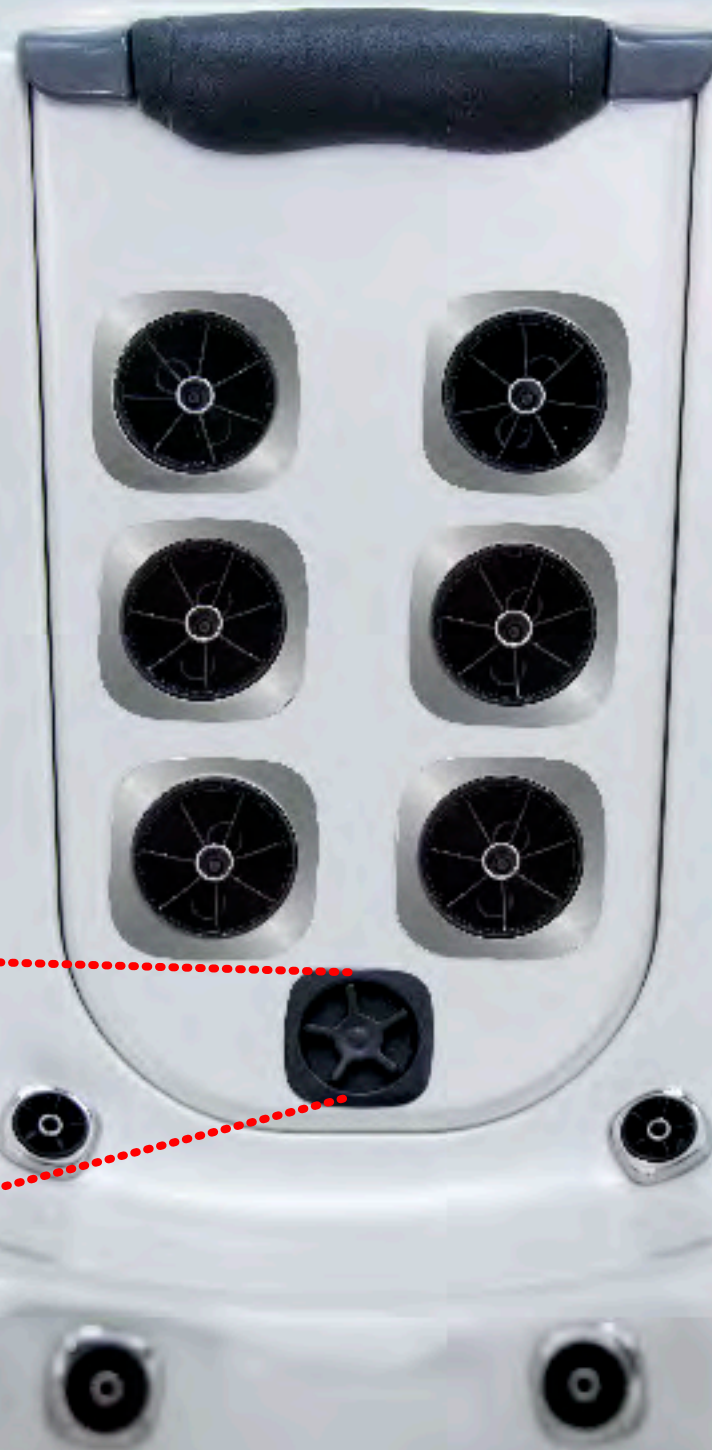
100%

..... PERFORMANCE

The plumbing used in other spas is inefficient, expensive, and unreliable. Bullfrog Spas' exclusive H₂Air Manifold is one simple self-contained seat-back unit. The result is far less plumbing, greater efficiency, and optimal performance.

DIALED IN

Every aspect of the JetPak Therapy System was re-imagined and re-engineered to deliver the best personalized therapy and performance. With JetPaks® you are in complete control of your massage experience.





CUSTOMIZATION

■ NECKBLASTER™

Maximum Stress Relief

The NeckBlaster JetPak provides a one-of-a-kind massage. With the most penetrating neck and shoulder jets of any JetPak, along with a complete-back array of single pulse jets, you'll get a powerful massage that eliminates built up tension in neck and shoulder muscles.



■ ALLEVIATE™
Perfectly Aligned Therapy

The Alleviator JetPak features 8 bio-aligned medium pressure jets with a steady-stream massage for a unique whole-back sensation.



■ PULSATOR™
Comfortable Rhythmic Massage

The Pulsator JetPak features 6 rotating dual pulse jets to provide comfortable rhythmic full-back therapy.



■ ACUTHERAPY™
Focused Stress Relief

The AcuTherapy JetPak combines deep-relief jets for the upper and lower back muscles and a medium pressure massage for the mid back.



■ **GYROSSAGE™**

Peaceful Rhythmic Sensation

The Gyrossage JetPak utilizes 5 rotating single pulse jets to provide a rhythmic kneading massage for your entire back.



■ **RELIEVER™**

Maximum Relief

The Reliever JetPak combines a deep steady massage in the lower back with a medium-pressure kneading of upper obliques.



■ **DEEPRELIEF™**

Deep Tension Relief

The DeepRelief JetPak provides a steady penetrating whole-back massage for maximum tension relief.

UPGRADEABILITY

FIBROTHERAPY™

Therapy for Pain Relief and Health

The FibroTherapy JetPak is engineered to provide a unique kneading action to relax your lower back with deep-penetrating therapy in the area of your thoracic vertebrae.





PERSONALIZATION

■ NECKMASSEUSE™

Targeted Neck Therapy

The NeckMasseuse JetPak combines a targeted deep-pressure massage for relief of neck, shoulder, and upper back tension with the rhythmic massage of 3 large rotating single-pulse jets.



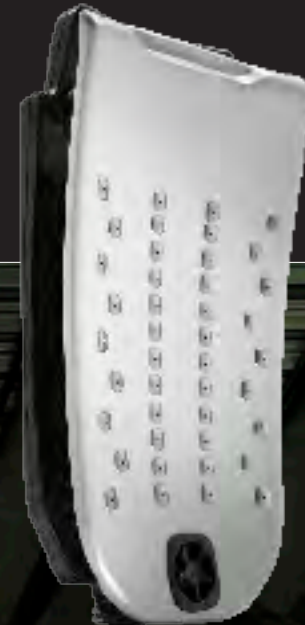
■ **OSCILLATOR™**
Ultimate Kneading Massage

The Oscillator JetPak provides a unique wide-coverage kneading massage to soothe all key regions of your back.



■ **CASCADIA™**
Waterfall and Massage

Designed for the A8, A8L, and A8D models, the Cascadia JetPak combines a smooth waterfall feature with a steady 4-point back massage.



■ **RAINSHOWER™**
Smooth Soothing Sensation

The RainShower JetPak features 42 of Bullfrog Spas' exclusive Shower Jets aligned for a smooth caressing whole-back massage.



SPINALHEALTH™
Powerful Spinal Therapy

The SpinalHealth JetPak provides a steady deep-penetrating massage for the upper and lower spinal muscles.



SPINALSSAGE™
Spinal Tension Relief

The SpinalSage JetPak provides a simple, yet highly effective, dual pulse massage for your spinal region.



WELLNESS™
All-Around Back Therapy

The Wellness JetPak combines 3 unique jet types to create an amazing whole-back massage experience.

INTERCHANGEABILITY

■ LUMBAR™

Powerful Low-Back Therapy

The Lumbar JetPak targets key pressure points in your lower back with a deep-pressure penetrating hydromassage, combined with a rhythmic dual pulse massage for the upper back muscles.





A SERIES

PREMIUM LUXURY



Advanced and stylish, yet elegantly simple, the A Series sets a new standard in spa excellence.



SIZE 7' 10" x 7' 10" x 38" / 2.39m x 2.39m x .97m
WATER CAPACITY 540 gallons / 2044 liters
DRY WEIGHT 758 lbs. / 344 kg
FILLED WEIGHT 6409 lbs. / 2907 kg
JETPAKS 6
INDUSTRIAL PUMPS 2

A 8

8
interior speakers
(audio system optional)



8
available seats

\$14
per month EST*



*Estimated monthly operating cost based on \$.10 per kw/h, 60°F ambient temperature, 101°F water temperature and CEC reported data.

A 8 L

SIZE 7' 10" x 7' 10" x 38" / 2.39m x 2.39m x .97m
WATER CAPACITY 504 gallons / 1908 liters
DRY WEIGHT 778 lbs. / 353 kg
FILLED WEIGHT 6296 lbs. / 2856 kg
INDUSTRIAL PUMPS 2



6
custom JetPaks

7
available seats

4
exterior sconce lights
(standard on all A Series spas)



SIZE 7' 10" x 7' 10" x 38" / 2.39m x 2.39m x .97m
WATER CAPACITY 512 gallons / 1938 liters
DRY WEIGHT 763 lbs. / 346 kg
FILLED WEIGHT 6164 lbs. / 2796 kg
JETPAKS 5
INDUSTRIAL PUMPS 2

A8D





2
full comfort lounges

5
available seats

1
large color display
(standard on all A Series spas)





2
luxury captain chairs

8
available seats

\$12
per month EST*

A7

SIZE	7' 4" x 7' 4" x 36" / 2.24m x 2.24m x .91m
WATER CAPACITY	434 gallons / 1643 liters
DRY WEIGHT	661 lbs. / 300 kg
FILLED WEIGHT	5316 lbs. / 2411 kg
JETPAKS	5
INDUSTRIAL PUMPS	2

*Estimated monthly operating cost based on \$.10 per kw/h, 60°F ambient temperature, 101°F water temperature and CEC reported data.







SIZE 7' 4" x 7' 4" x 36" / 2.24m x 2.24m x .91m
WATER CAPACITY 440 gallons / 1666 liters
DRY WEIGHT 680 lbs. / 308 kg
FILLED WEIGHT 5235 lbs. / 2375 kg
JETPAKS 5
INDUSTRIAL PUMPS 2

A7L

5

ComfortFit pillows
(standard on all A series spas)

6

available seats

1

full comfort lounge

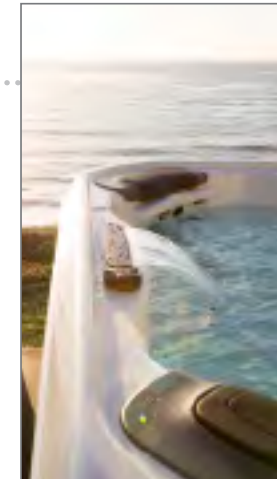


A6L

SIZE	6' 8" x 7' 4" x 34" / 2.03m x 2.24m x .86m
WATER CAPACITY	350 gallons / 1324 liters
DRY WEIGHT	575 lbs. / 261 kg
FILLED WEIGHT	4552 lbs. / 2065 kg
JETPAKS	4
INDUSTRIAL PUMPS	1



1
Cascadia water feature
(standard on all A Series spas)



6
available seats

\$11
per month EST*



*Estimated monthly operating cost based on \$.10 per kw/h, 60°F ambient temperature, 101°F water temperature and CEC reported data.



A5L

SIZE	5' 8" x 7' x 31" / 1.73m x 2.13m x .79m
WATER CAPACITY	243 gallons / 920 liters
DRY WEIGHT	455 lbs. / 206 kg
FILLED WEIGHT	3209 lbs. / 1456 kg
JETPAKS	3
INDUSTRIAL PUMPS	1

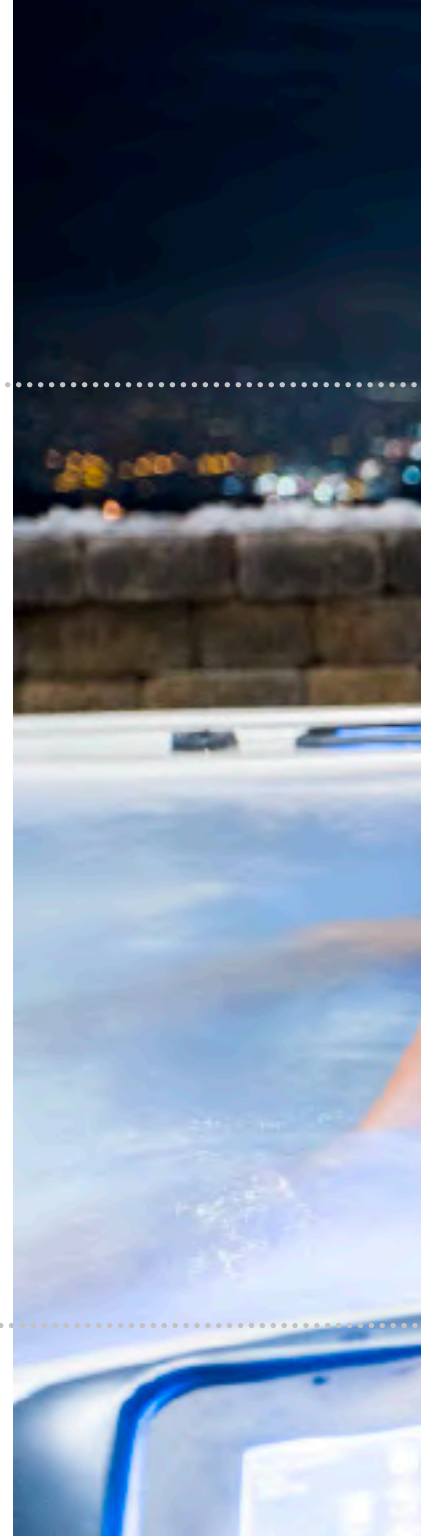


1
auxiliary jet control
(standard on all A Series spas)

3
available seats

\$11
per month EST*

*Estimated monthly operating cost based on \$.10 per kw/h, 60°F ambient temperature, 101°F water temperature and CEC reported data.







R SERIES

AFFORDABLE LUXURY

★★★★

Stunning design with uncompromising quality. The most fully featured spa in its class.

R7L

R



SIZE	7'4" x 7'4" x 36" / 2.24m x 2.24m x .91m
WATER CAPACITY	426 gal/ 1613 liters
DRY WEIGHT	680 lbs/ 308 kg
FILLED WEIGHT	5151 lbs/ 2337 kg
JETPAKS	4
INDUSTRIAL PUMPS	2

6
available seats

SERIES

AFFORDABLE LUXURY

R7



a touch of tranquility

8

available seats



SIZE	7'4" x 7'4" x 36" / 2.24m x 2.24m x .91m
WATER CAPACITY	432 gal/ 1635 liters
DRY WEIGHT	661 lbs/ 300 kg
FILLED WEIGHT	5184 lbs/ 2351 kg
JETPAKS	4
INDUSTRIAL PUMPS	2

R6L



R

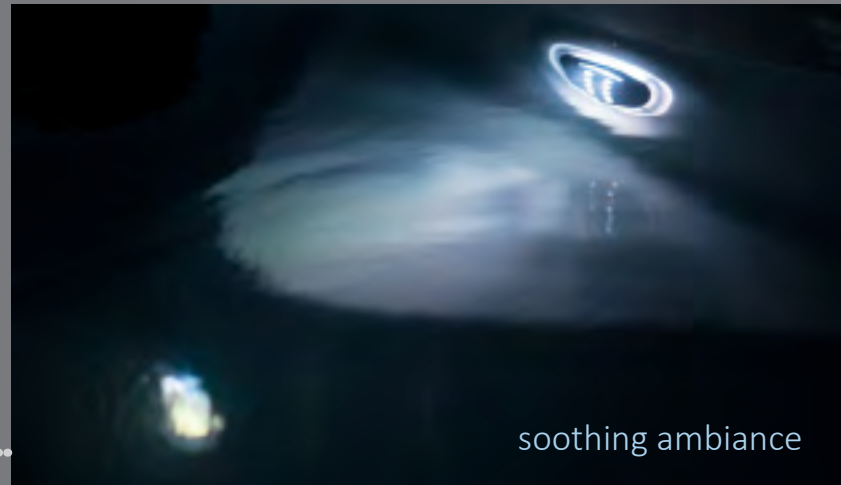
SIZE	6'8" x 7'4" x 34" / 2.03m x 2.24m x .86m
WATER CAPACITY	342 gal / 1295 liters
DRY WEIGHT	575 lbs / 261 kg
FILLED WEIGHT	4469 lbs / 2027 kg
JETPAKS	3
INDUSTRIAL PUMPS	1

6
available seats

SERIES

AFFORDABLE LUXURY

R5L



soothing ambiance

3
available seats



SIZE	5'8" x 7'0" x 31" / 1.73m x 2.13m x .79m
WATER CAPACITY	235 gal / 890 liters
DRY WEIGHT	455 lbs / 206 kg
FILLED WEIGHT	3126 lbs / 1418 kg
JETPAKS	2
INDUSTRIAL PUMPS	1

UNMATCHED QUALITY

Our commitment to quality begins with the solid ABS EnduraBase™ foundation. The 100% wood-free EnduraFrame support structure is precision-built with a composite material that is impervious to moisture. Other conventional hot tubs still use wood or metal framing that can rot, warp, or corrode. With a Bullfrog Spa, you have no need to worry about the elements.

The ultra-durable 3 layer spa shell is designed to last a lifetime. This incredibly strong shell is further supported by energy smart, full foam insulation. In all areas of design and manufacturing your Bullfrog Spa is built to last and is backed by our comprehensive warranty.

WARRANTY

	A SERIES	R SERIES
EnduraFrame & Base	Life	Life
Shell Structure	10 yrs.	7 yrs.
Shell Surface	7 yrs.	5 yrs.
Components JetPaks Cabinet	5 yrs.	5 yrs.
Lighting Stereo System Ozone System	1 yr.	1 yr.

Wood-Free EnduraFrame™

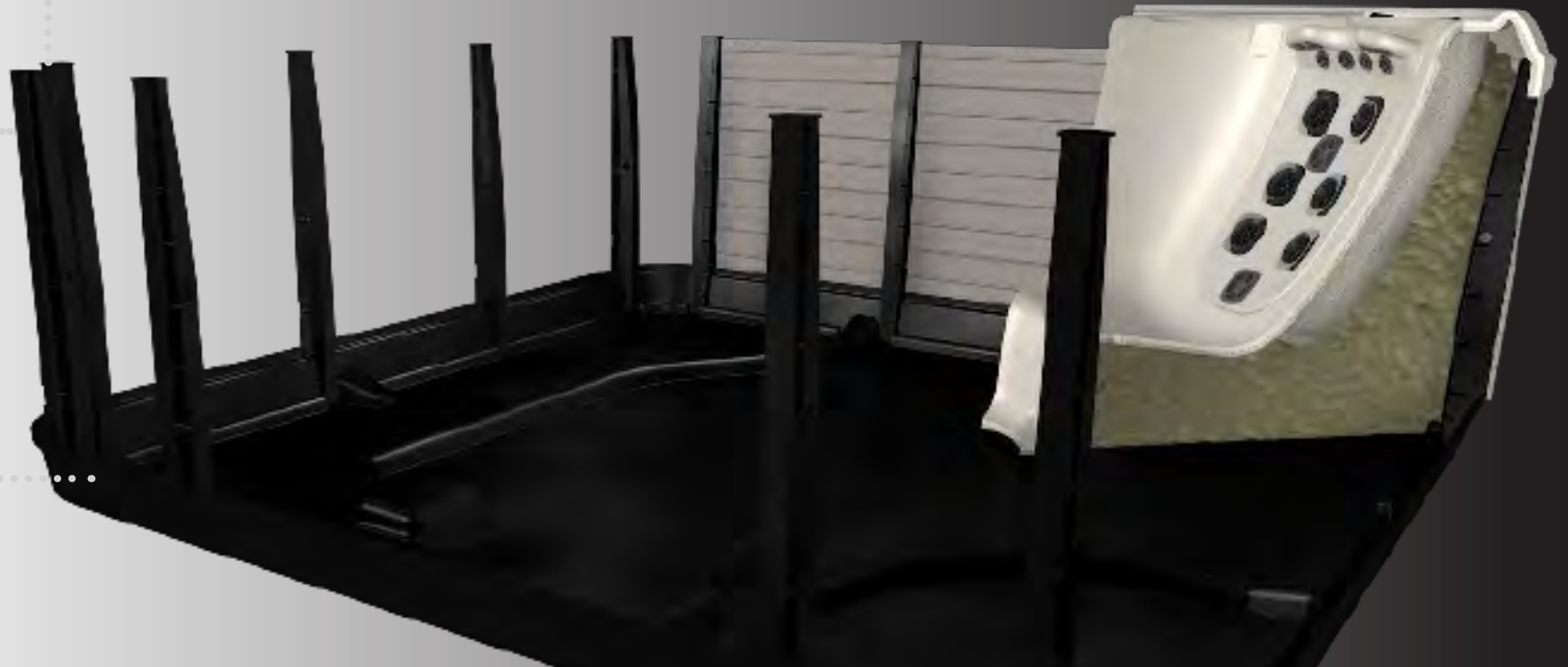


Full Foam
Insulation

High-Density
Polyurethane

ABS Rigidizer

Acrylic Spa Shell



EFFICIENCY PERFECTED

THERE IS ALWAYS A BETTER WAY

up to **90%**
Less Plumbing

OURS



THEIRS



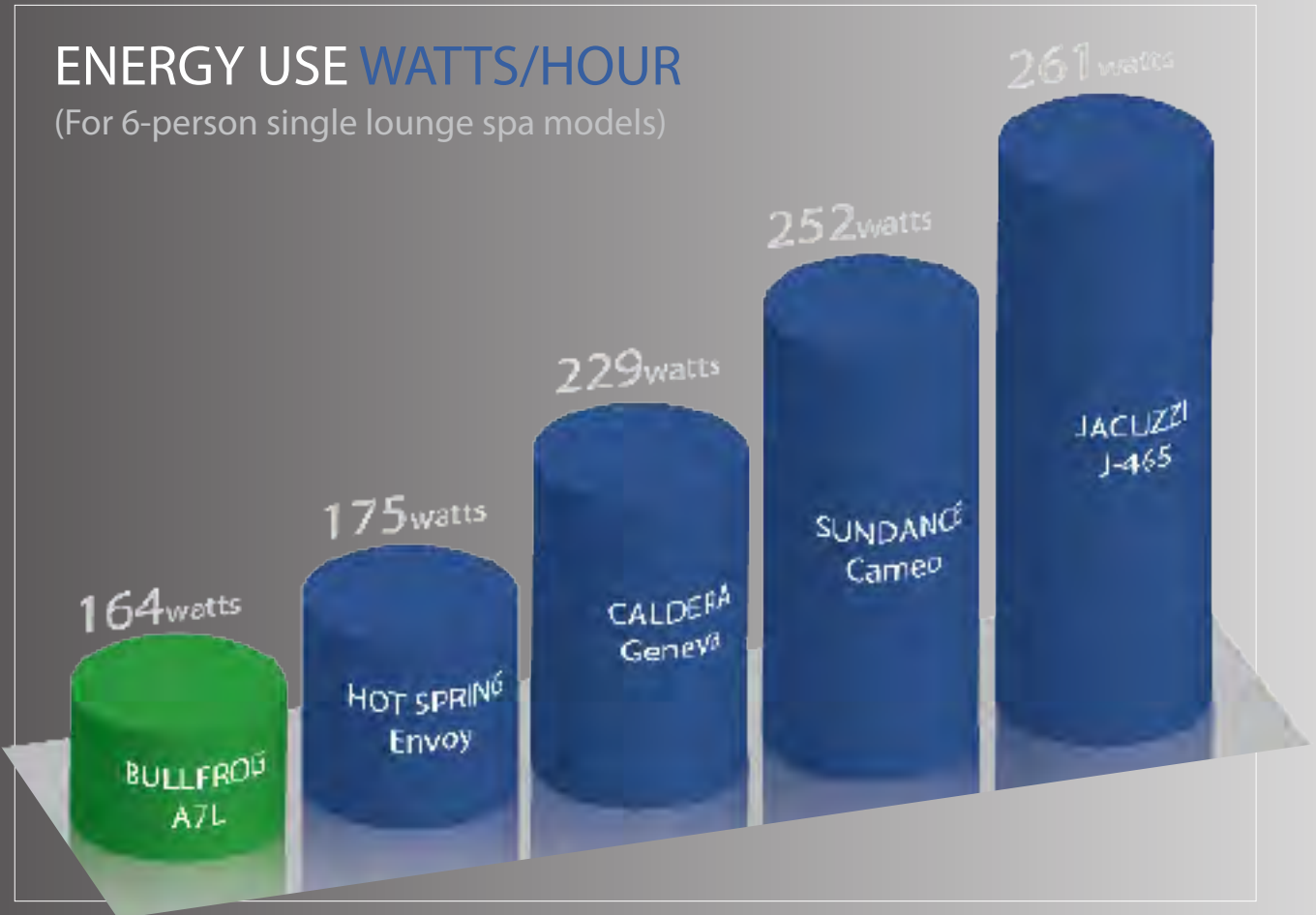
Bullfrog Spas use less energy than other comparable spas, saving you thousands of dollars over time.

The ultra-efficient plumbing design of your Bullfrog Spa provides more powerful massages while helping to minimize energy costs.

MONTHLY OPERATION COST

\$11.81*

for an A7L model



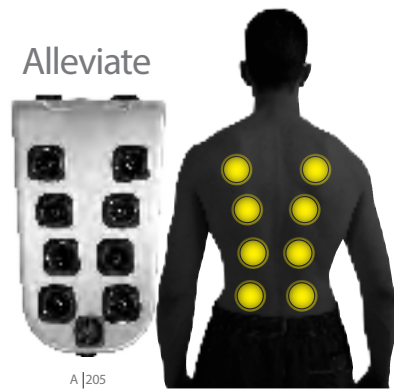
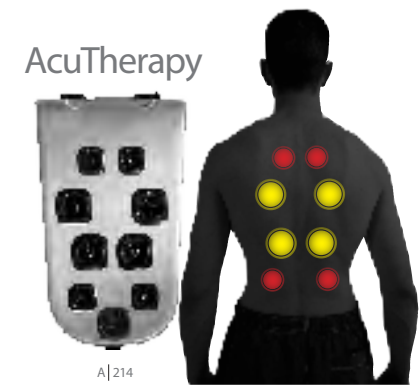
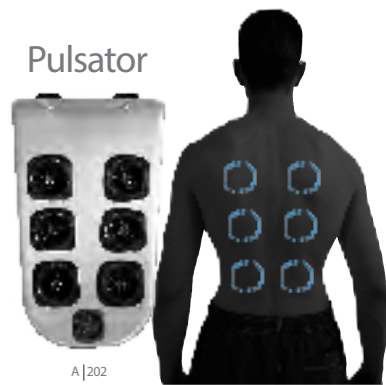
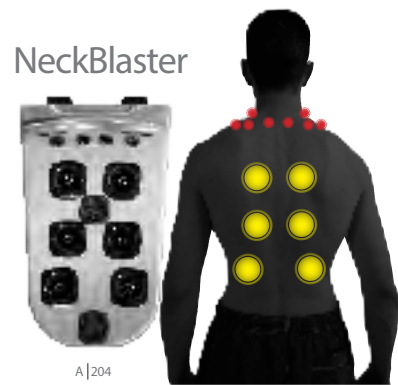
* Figures based on A7L model with optional WellSpring filtration pump, avg. energy cost of \$0.10 per kilowatt hour, avg. ambient air temperature of 60°F and 101°F water temperature. Energy usage shown varies according to local rates and use. Energy usage figures based on data published by the California Energy Commission.

SPA OPTIONS

INTERIOR FEATURES	A Series	R Series	DESCRIPTION
JetPak Therapy System	Standard	Standard	Choose from 16 unique JetPaks to customize your spa. JetPaks can be interchanged at any time.
Durable 3-Layer Spa Shell	Standard	Standard	Beautiful acrylic surface is chemically bonded to a tough ABS layer and then backed with a dense coat of polyurethane rigidizer.
Wood-Free EnduraFrame	Standard	Standard	This precision-formed ABS frame is strong, durable, and moisture proof. No rotting, warping or corrosion like wood-framed or metal-framed spas.
Electronic Spa Control	Standard A900	Standard R600	USA made Balboa control systems feature color screens (A900) and easy menu driven control of your spa.
Auxiliary Jet Control	Standard	N/A	Turn on jets to low or high from any place in the spa with these simple one-touch control buttons.
Brushed Stainless Steel Jets	Standard	Optional	Enhance the look of your spa with beautiful brushed stainless steel jet faces.
Interior LED Mood Lighting	Standard	Standard	Improve your relaxation experience with multi-colored in-spa LED lighting. Multiple modes for solid colors, fading in and out, or quickly changing colors to suit your preferences.
Perimeter Cup Holders	Standard Backlit	Standard	Your A series cup holders are visible, even at night, with a lighted JetPak logo.
Water Feature	Standard Cascadia	Standard pop-up	Enjoy the soothing sounds of falling water and fun with a Cascadia waterfall or pop-up water feature.
ComfortFit Pillows	Premier	Standard	Comfort engineered spa pillows designed to support your relaxation position.
Elite Audio System	Optional	Optional	Rich quality sound with a powered sub-woofer, in-spa speakers, compatibility with multiple digital music players, Bluetooth, wireless remote, FM radio and optional out-facing yard speakers.
Life Audio System	Optional	Optional	Bluetooth audio system with in-spa speakers, sub-woofer, and spa control integration.



EXTERIOR FEATURES	A Series	R Series	DESCRIPTION
EnduraBase	Standard	Standard	ABS base is moisture proof and 100% wood-free. Includes convenient electrical chase ways, screens to keep out pests, molded hand holds, and an easy exterior drain.
Energy Smart Full Foam Insulation	Standard	Standard	Less plumbing in our design allows for more polyurethane insulation, which fills all dead air spaces and creates a higher R-value to lock in heat.
EternaWood Cabinet	Standard	Standard	100% wood-free spa cabinet. Weather resistant and requires no maintenance.
Exterior LED Lighting	Standard	N/A	LED sconce exterior lights are an important safety feature for nighttime spa use.

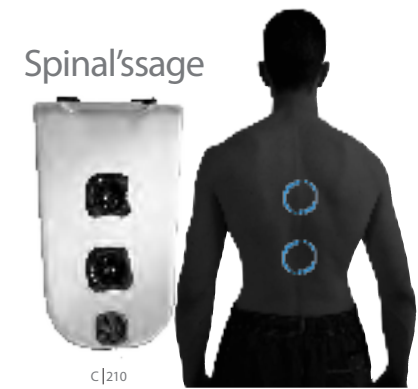
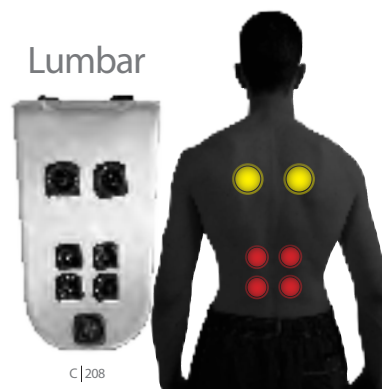
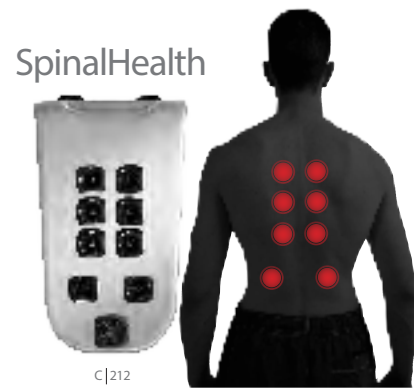
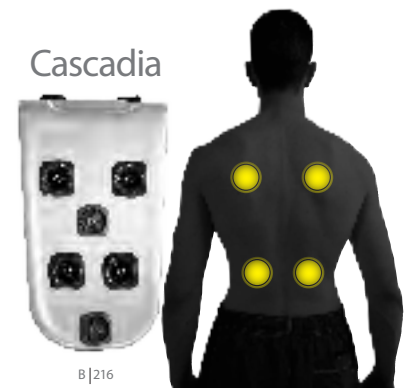
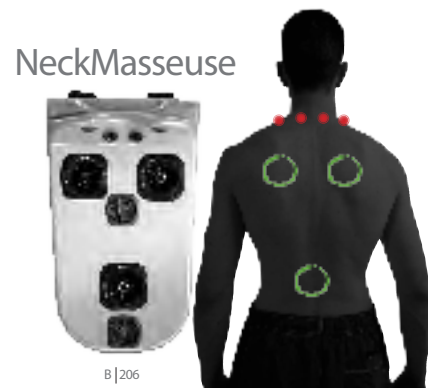
EQUIPMENT FEATURES	A Series	R Series	DESCRIPTION
2.5 HP/4.8 BHP Industrial Jet Pumps	Standard	Standard	Industrial-grade pumps operate longer, quieter and use less energy.
WellSpring Water Care System	Standard	Standard	Designed to provide the optimum amount of circulation and filtration. Includes 2 oversized spa filters that are protected by Microban Antimicrobial Technology which inhibits the growth of harmful bacteria for maximum water purity.
WellSpring Filtration Pump	Optional	Optional	Dedicated and programmable filtration pump improves water quality with virtually silent operation. (N/A model A5L & R5L)
WellSpring High-Output Ozone	Optional	Optional	Featuring Advanced Plasma Gap technology that consistently helps keep your spa clean while reducing the need for other spa care products.
CloudControl™	Optional	Optional	An Android or iOS app allows you to operate your spa from your smartphone or wi-fi enabled device. Monitor and control your spa from anywhere in the world.
CoverMate I Cover Lifter	Optional	Optional	The CoverMate Cover Lifter makes it easy for even one person to lift your spa cover. Also creates a privacy shield on one side when in the lifted position.
DuraSteps	Optional	Optional	Durable composite steps in coordinating colors make it easy and safe to get in and out of your spa.



MASSAGE TYPE

● Powerful DeepRelief Jets



 Kneading Oscillator Jets
 Relaxing FirmRelief Jets



*NeckBlaster and NeckMasseuse not available in matte black JetPaks.

*Cascadia JetPak available only in A8,A8L, and A8D models.

-  Rhythmic Single Pulse Jets
-  Rapid Dual Pulse Jets

-  Soothing RainShower Jets
-  DeepRelief Neck Jets

A SERIES

A8



7' 10" x 7' 10" x 38"
2.39m x 2.39m x .97m

A8L



7' 10" x 7' 10" x 38"
2.39m x 2.39m x .97m

A8D



7' 10" x 7' 10" x 38"
2.39m x 2.39m x .97m

A7



7' 4" x 7' 4" x 36"
2.24m x 2.24m x .91m

A7L



7' 4" x 7' 4" x 36"
2.24m x 2.24m x .91m

A6L



6' 8" x 7' 4" x 34"
2.03m x 2.24m x .86m

A5L



5' 8" x 7' x 31"
1.73m x 2.13m x .79m

Select a Bullfrog Spa model, JetPaks, and the colors of your shell, cabinet, and spa cover.

R SERIES

R7



7' 4" x 7' 4" x 36"
2.24m x 2.24m x .91m

R7L



7' 4" x 7' 4" x 36"
2.24m x 2.24m x .91m

R6L



6' 8" x 7' 4" x 34"
2.03m x 2.24m x .86m

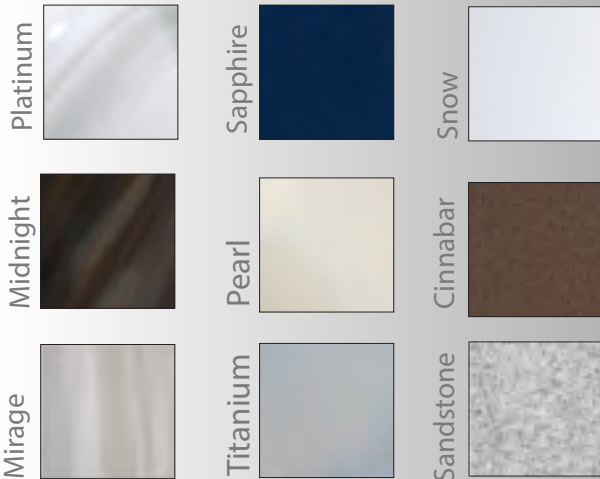
R5L



5' 8" x 7' x 31"
1.73m x 2.13m x .79m

ALL A&R SERIES BULLFROG SPAS REQUIRE AN ELECTRICAL CONNECTION: 240V-30/50A. A5L & R5L AVAILABLE WITH 120V-15A

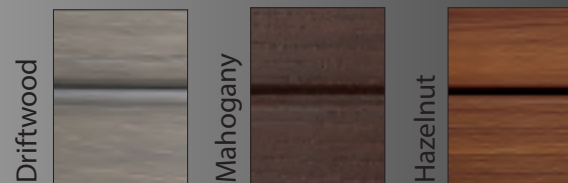
Available Colors Interior & JetPaks



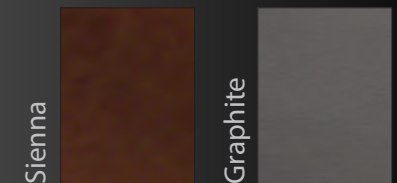
Premium Exterior



Exterior



Covers





Authorized Bullfrog Spas Dealer

www.bullfrogspas.com/brochure

Bullfrog Spas are protected by multiple patents worldwide.

Specifications subject to change without notice.
© 2015 Bullfrog International, LC. All rights reserved.

Made in the USA



2.3

