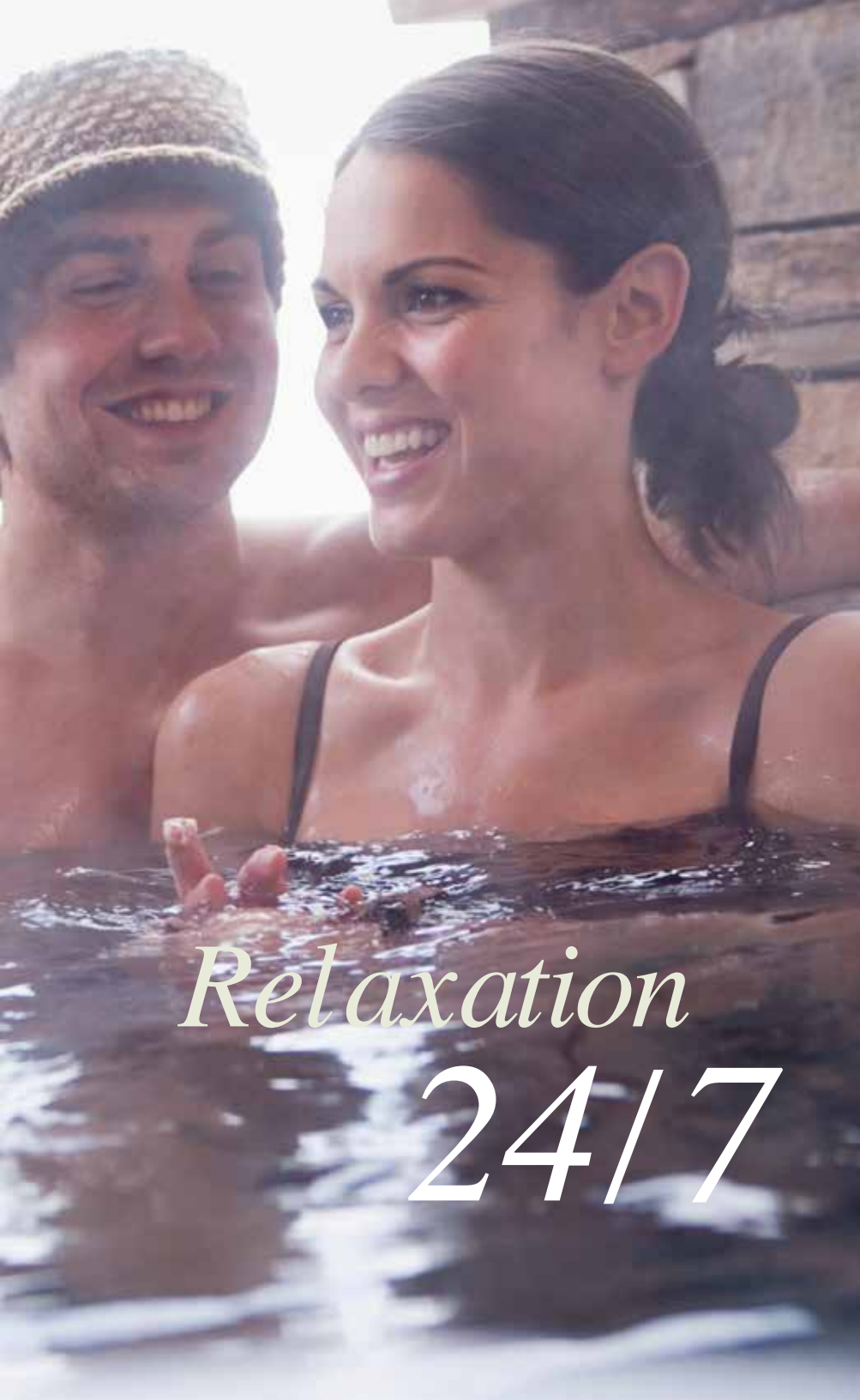




**COYOTE SPAS®**

A man and a woman are smiling and relaxing in a hot tub. The man is on the left, and the woman is in the center wearing a grey fur hat. A third person's arm is visible on the right. The background is a stone wall. The text is overlaid on the bottom half of the image.

YOUR OWN SPA *Health*  
*Wellness* FAMILY TIME  
*Fitness* LUXURY  
ROMANCE



# *Relaxation* *24/7*

Coyote Spas® are designed using the latest therapeutic principles. Each spa is engineered to fit the contours of your body, to provide proper lumbar support and to maximize your comfort. Ergonomic seating cradles your body, while the jets melt away stress and muscle strain.

No other substance on Earth can rival the innate natural healing properties of water. Ancient cultures recognized water as a natural medicine and pioneered the use of hydrotherapy for treatment of all manner of illnesses, pain and disease. A warm soak and having your muscles and joints massaged with water jets, creates measurable positive physiological changes in our bodies.

Traditional Spa designs afford much of these benefits, but our research shows that there is so much more that can be done to enhance the benefits of hydrotherapy.

Coyote Spas® engineers utilize larger high volume jets that pulsate to provide much better massage than the simple jets of years past. Targeted zones of massage concentrate the best jet action for that part of the body to deliver the ideal restorative results.



# THERAPY ZONES

---

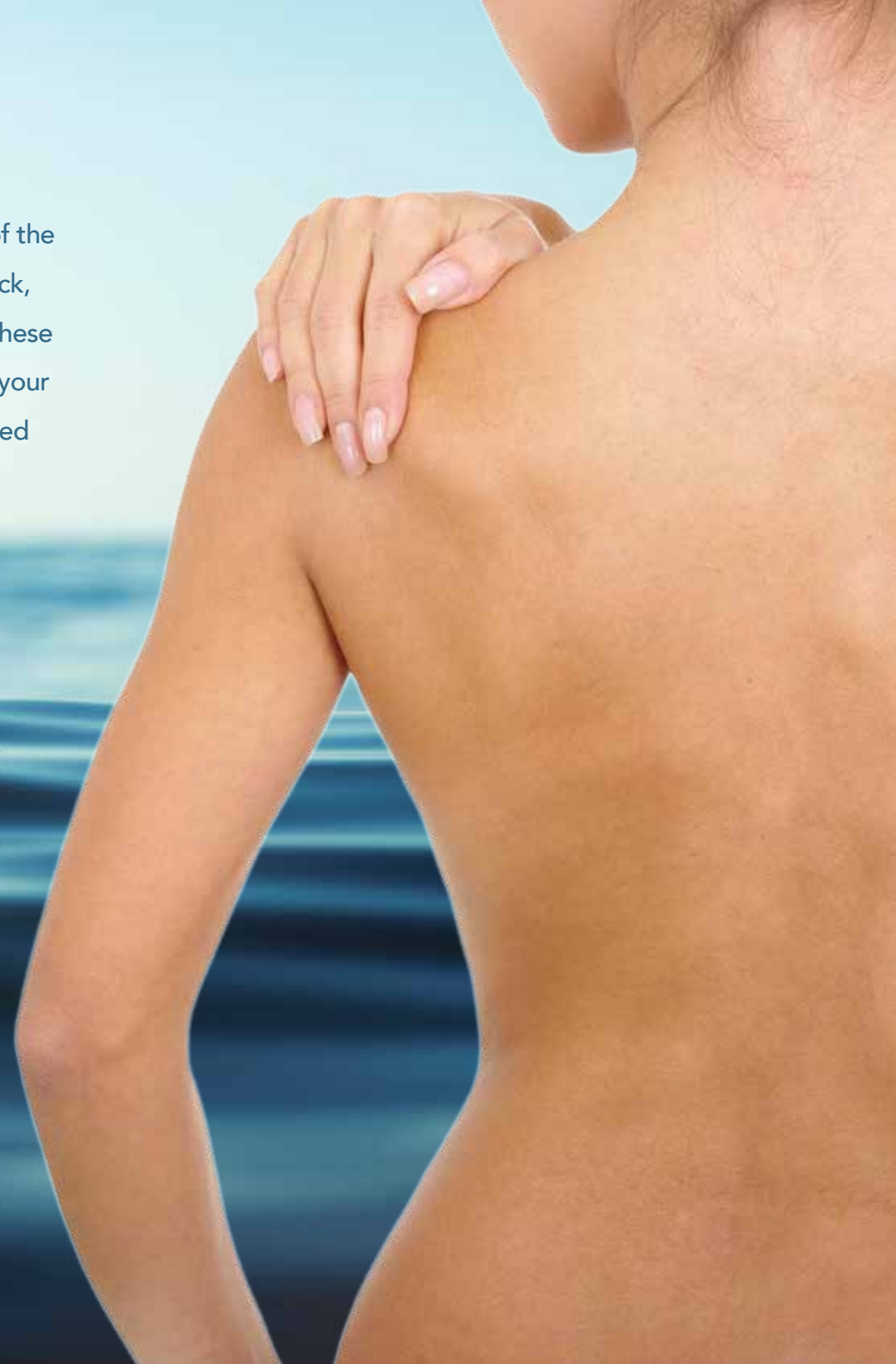
We have concentrated the jets in the corner seats to specific areas of the body making these targeted therapy zones. Lower body, lower back, upper body, mid-back and overall body coverage are all focuses of these seats. In essence, you can circuit train and address specific areas of your body by moving from zone to zone. Jetting in each zone is customized to provide optimal massage to that area of the body and deliver the ideal restorative results.



## JETS REDESIGNED

---

Vital to providing the best spa hydrotherapy available are jets that continue to perform over the long-term. Every Coyote Spa uses Axis™ and Quantum™ jet technologies and are the only jets available that effectively deal with problematic water chemistry. Further these jets operate with minimal friction, making the pulsating effect more powerful with less energy!





UPPER BODY:  
NECK, SHOULDER FOCUS



OVERALL BODY:  
QUICK FULL BODY MASSAGE FOCUS



MID-BACK :  
TORSO, UPPER LUMBAR AND SHOULDER FOCUS



LOWER BODY:  
FOOT, CALF, THIGH AND BUTTOCKS FOCUS



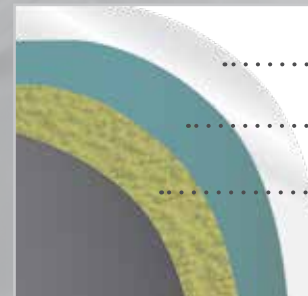
LOWER BACK:  
LUMBAR, SCIATIC FOCUS

# ADVANCED TECHNOLOGY



## COYOTE SPAS® SHELL TECHNOLOGY

The basis of any quality spa is the strength of the shell. At Coyote Spas®, we start with a wide selection of high gloss smooth and textured ABS backed cast acrylics. Then a proprietary heat transferring, no VOCs, composite material called Elastocast™ is sprayed on the shell to give steadfast structural integrity. This environmentally responsible way of building a spa shell allows us to take advantage of our Northern Insulation Heatlock® system.



..... Acrylic Spa Shell

..... ABS Rigidizer

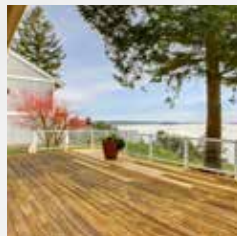
..... High- Density Polyurethane



## EVERLAST™ FLOOR\*

Coyote Spas® are available with our Everlast™ floor. This vacuum formed durable recycled ABS bottom is fully insulated and completely seals the underside of the spa, keeping it impervious to moisture, pests and time.

\* Not available on Havasu



# COYOTE CONFIDENCE

## VACSEAL COVER



Heat from the pump enters the spa shell and heats the water. Coyote Spas® insulation stops heat from escaping.

## HEAT LOCK INSULATION

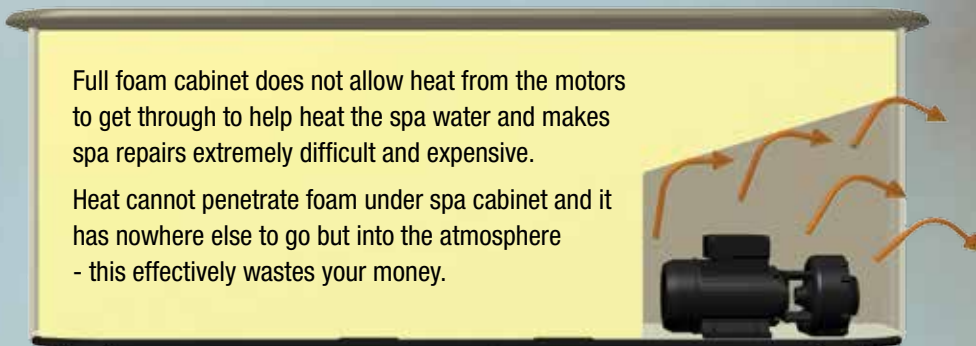
Coyote Spas® utilize a perimeter Heatlock® insulating system first developed for spas installed in the coldest regions in the world. Fundamental to this design is an outer layer of high tech insulating material, a trapped dead air space where the equipment is housed, and a shell material that allows the transfer of incidental heat through the spa shell.

This design guarantees extremely low operating costs and protects against freezing in the event of power failure.

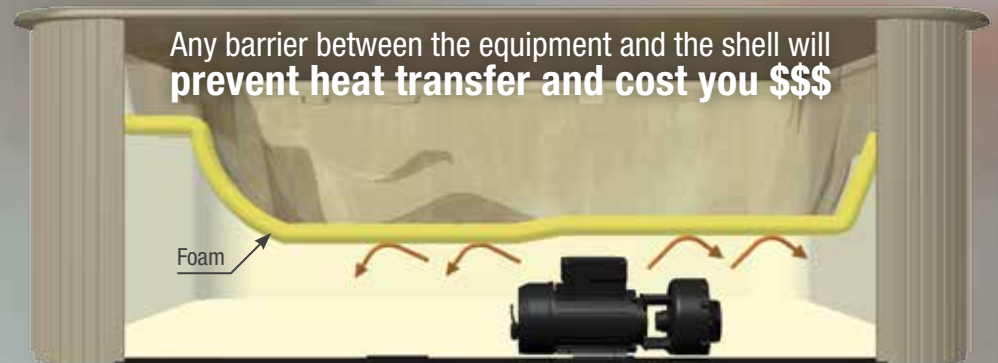
## OTHER SPAS:

Full foam cabinet does not allow heat from the motors to get through to help heat the spa water and makes spa repairs extremely difficult and expensive.

Heat cannot penetrate foam under spa cabinet and it has nowhere else to go but into the atmosphere - this effectively wastes your money.



Any barrier between the equipment and the shell will **prevent heat transfer and cost you \$\$\$**







## VACSEAL COVER

Coyote Spas® offers a wide range of hot tub covers and specifications. At the very top of our line is the VACSEAL™ cover, which is available on some models. This cover will outlast and retain more heat than any other cover. The VACSEAL™ cover was designed for extreme cold climates where temperatures reach 30 below zero for weeks on end and winter winds can blow standard covers across town.

\*Terrace series comes standard with a two-tone cover.





## STATE-OF-THE-ART CONTROLS

---

All Coyote Spas come standard with cutting-edge control systems. Paired with a proven, durable and self-diagnostic topside control, the control system is both convenient and reliable. All spa functions including temperature control, filtration control, LED lighting system and much more are at your fingertips.



## ADVANCED MICRO FILTRATION

---

Coyote Spas® utilize recyclable Silver Sentinel micro filters. This layered media thoroughly filters suspended particles down to 1 micron on a single pass leaving you with crystal clear water without the fuss of traditional filter systems.



## SOUND FX STEREOS

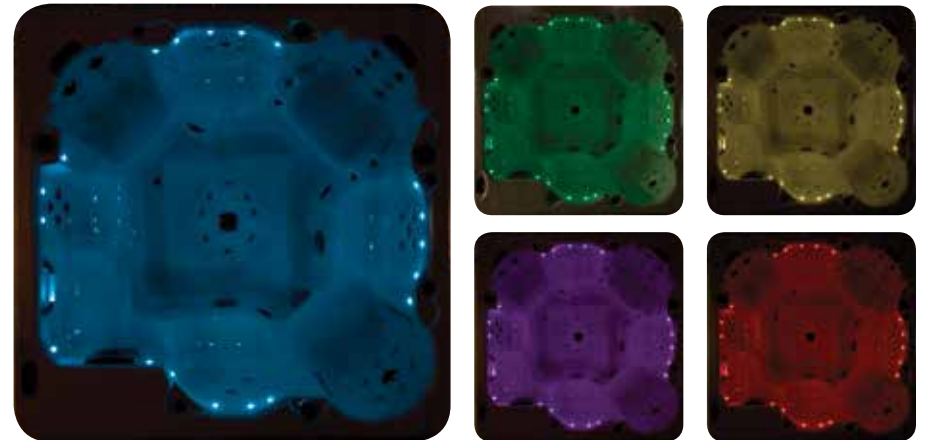
---

To enhance your hot tubbing experience, all Coyote Spas (except the Mesa) are available with marine grade stereo systems. Two flush mounted speakers paired with a Bluetooth amp and sub-woofer deliver superior sound quality. Control of your music is provided via wireless Bluetooth signal to your compatible device. A convenient supplemental control pad is also mounted on the spa side wall.



## LIGHTING

Coyote Spas® uses Precision Beam Diffusion™ LED technology to deliver perfectly mixed true color. Further, by using Wide Radius Projection™ technology our LED lights deliver more pure mood enhancing light than any other lights available. Enjoy your favorite color or at the touch of a button, change the lighting to whatever you desire.





# TERRACE *series*

Bold, sweeping lines and thoughtful two tone accents define the new look of the Terrace Series and accentuate the new thinking that is behind this innovative spa line.

Completely reinvented to focus on much of what has been learned about hot tubs and their benefits on the human body over the course of years of research and development.

The Terrace Series is based on the premise that the spa must be designed for who uses it most of the time and that therapy is the fundamental goal of the users. In order to maximize the healing properties of a spa, one must design the units to accommodate the various body types comfortably and then target those areas of the body correctly.

Traditionally, spas have tried to offer in each seat of the tub an array of jets so that all users could get some jetting. But the reality is that most spas are used regularly by two people and if we keep this in mind we can design seating and jetting for the main users and worry less about the few times a year that groups use the spa.

Seating is more open and barrier-free in style not for seating capacity, but rather to facilitate easy movement from seat to seat with minimal impediment. You will note that many of the middle seats on this line of tubs do not have jets at all and we have concentrated the jets in the corner seats, making these the targeted therapy zones. Going even further, each of these zones has a distinct focus for the jetting. Lower body, lower back, upper body, mid-back and overall body coverage are all focuses of these seats. In essence, you can circuit train and address specific areas of your body by moving from zone to zone.



# *the* MESA

## SEATING FOR 2 | 12 JETS

The new Mesa sets new standards for affordable luxury. Cool curves and smooth lines make the Mesa an appealing addition to any environment. Face to face offset seating is guaranteed to please in this great 2 person spa. Just fill and enjoy. You'll be wondering how you made it this far without one.



DIMENSIONS	86" x 46" x 29.5" ( 218.5cm x 117cm x 75cm )
WATER CAPACITY	163 gallons/ 617 litres
JETS /PUMPS	12- 3" jets, 1 pump
SEATING	2 people

## FEATURES & OPTIONS

- Beautiful curvilinear design
- Contoured design for comfort
- Effective hydro-massage for forearms, neck, back, legs and feet
- Multi-colored LED lights and drink holders
- Ecopro™ Professional Series ozone system
- All jets rotate using our patented Axis and Quantum technologies.
- Optional 110 Volt (12A) Power Configuration



TERRACE *series*

# *the* TUCSON

SEATING FOR 6 | 51 JETS | LOUNGE

The Tucson features a multi-level, barrier free, single lounge layout. Smooth lines and a curved interior profile, give the Tucson a high-end luxury feel. Enjoy one of the three different depth corner buckets or cool down on one of the shallower bench seats. Stretch out and relax in the lounge and let your cares soak away. Whether it's family or friends, all are guaranteed to love this spa.



DIMENSIONS	89"x93"x 35.5" ( 226cm x 236cm x 89cm )
WATER CAPACITY	375 gallons/ 1420 litres
JETS /PUMPS	26- 3" & 23- 5" jets 51 total jets, 3 pumps
SEATING	Up to 6 people

## FEATURES & OPTIONS

- Beautiful curvilinear design
- Contoured design for comfort
- Effective hydro-massage for forearms, neck, back, legs and feet
- 2 position headrests
- Multi-colored LED lights and drink holders
- EcoPro™ Professional Series ozone system
- SFX sound system
- 2 Waterfall Neck Jets with illuminated waterfall
- All jets rotate using our patented Axis and Quantum technologies.





# *the* DURANGO

## SEATING FOR 7 | 51 JETS

The Durango mixes open seating and style in a striking combination. Comfortable seating for seven people, the Durango makes the perfect addition to your backyard. Get deep in one of the four corner buckets or cool down in one of the shallower benches. There are plenty of different levels for different body heights. Whether it's entertaining or relaxing, let the power of 3 x 4HP pumps massage your cares away.



DIMENSIONS	89" x 93" x 35.5" ( 226cm x 236cm x 89cm )
WATER CAPACITY	375 gallons/ 1420 litres
JETS /PUMPS	26- 3" & 23- 5" jets 51 total jets, 3 Pumps
SEATING	Up to 7 people

## FEATURES & OPTIONS

- Beautiful curvilinear design
- Contoured design for comfort
- Effective hydro massage for forearms, neck, back, legs and feet
- 2 position headrests
- Multi-colored LED lights and drink holders
- Ecopro™ Professional Series ozone system
- SFX sound system
- 2 Waterfall Neck Jets with illuminated waterfall
- All jets rotate using our patented Axis and Quantum technologies.



TERRACE *series*

# *the* MARICOPA

SEATING FOR 6 | 75 JETS | LOUNGE

A spacious 6 person spa, the Maricopa offers a varied seating format to accommodate every body height. Wash away stress in the full-body hydro-massage lounger, or ease the aches and pains of a long day in the captain's chair, complete with jets targeting neck, arms, wrists, and even the hands. The smooth curves of this stylish design make a great addition to any backyard.



DIMENSIONS	81" x 81" x 39.25" (206cm x 206cm x 99.75cm)
WATER CAPACITY	362 gallons/ 1370 litres
JETS /PUMPS	75 stainless steel jets (2) 4 HP pumps
SEATING	Up to 6 people

## FEATURES & OPTIONS

- Ozone Purification System
- Volcano Therapy Jet System
- LED Lighting System
- 5 Neck Jet Therapy Seat
- Eco-Pak Digital Controls
- Optional SFX Sound System
- Waterfall Jet



# *the* LAREDO

## SEATING FOR 7 | 75 JETS

With its open seating design, the Laredo easily accommodates a party of 6 to 7. Boasting dual captain's chairs both equipped with adjustable neck jets, along with three variable height bench seats all offering different therapeutic jetting configurations, this sleek model creates a custom massage for each person.



DIMENSIONS	81" x 81" x 39.25" (206cm x 206cm x 99.75cm)
WATER CAPACITY	400 gallons/ 1515 litres
JETS /PUMPS	75 stainless steel jets (2) 4 HP pumps
SEATING	Up to 7 people

## FEATURES & OPTIONS

- Ozone Purification System
- Volcano Therapy Jet System
- LED Lighting System
- 5 Neck Jet Therapy Seat
- Eco-Pak Digital Controls
- Optional SFX Sound System
- Waterfall Jet



OTERO *series*



# *the* HAVASU

## SEATING FOR 2-3 | 25 JETS

The Havasu creates an intimate atmosphere, exclusively seating 2-3 people; this is the perfect model for a condo or small patio.

The sleek triangular profile of the Havasu emphasizes ultimate comfort in a compact size. Recline in one of the two lounge chairs or traditional seat and enjoy the strategically placed high powered jets designed for soothing relaxation.



DIMENSIONS	79" x 79" x 37" Triangular (201cm x 201cm x 94cm)
WATER CAPACITY	200 gallons/ 757 litres
JETS /PUMPS	25 jets, (1) 2 HP Dual Speed pump
SEATING	2-3 people

## FEATURES & OPTIONS

- Ozone Purification System ready
- 12 volt Underwater Light
- Optional SFX Sound System
- Optional 110 Volt (12A) Power Configuration



# *the* OUTLAW

## SEATING FOR 6 | 14 JETS

The Outlaw delivers modern therapy and efficiency in a traditional round design, comfortably transporting a group of 6 to a world of relaxation and fun. With multilevel spacious seating for the very tall, very small and everyone in between, the Outlaw is perfect for families of all sizes.



DIMENSIONS	87" Round x 39" Deep ( 220.98cm x 99.06cm )
WATER CAPACITY	400 gallons / 1514 litres
JETS /PUMPS	14 jets, 1 pump (4HP 220V)
SEATING	Up to 6 people

## FEATURES & OPTIONS

- Ozone Purification System ready
- Multi-colored LED drink holders
- Optional SFX Sound System
- Optional 110 Volt (12A) Power Configuration



ARROYO *series*

# *the* TEMPE

## SEATING FOR 6 | 30 JETS

The Tempe is a feature rich family spa with seating up to six. Featuring ergonomic seating design with variation of depth and width, the Tempe's seating layout surrounds a spacious footwell. The Tempe is equipped with modern, top skimming filtration and 30 therapeutic jets provide high quality massage and fun.



DIMENSIONS	81" x 81" x 37.5" ( 206cm x 206cm x 95.25cm )
WATER CAPACITY	341 gallons / 1291 litres
JETS /PUMPS	30 jets 1 pump (4HP 220V)
SEATING	Up to 6 people

## FEATURES & OPTIONS

- Ozone Purification System ready
- Diverter Valve Controlled Operation
- 12 volt Underwater Light
- 2 Neck Jet Therapy Seat
- Optional SFX Sound System
- Optional 110 Volt (12A) Power Configuration





# *the* AMARILLO

## SEATING FOR 6 | 30 JETS

Comfortably seating up to 6 people, the Amarillo offers powerful therapeutic seats, along with subtler yet invigorating options. The lounge provides a full-body hydro-massage with jets targeting legs, calves, feet and back.

This elegant model leads the way in innovative design and spa-therapy.



DIMENSIONS	81" x 81" x 37.5" (206cm x 206cm x 95.25 cm)
WATER CAPACITY	300 gallons/ 1136 litres
JETS /PUMPS	30 jets (1) 4 HP Dual Speed pump
SEATING	Up to 6 people

## FEATURES & OPTIONS

- Ozone Purification System ready
- Diverter Valve Controlled Operation
- 12 volt Underwater Light
- 2 Neck Jet Therapy Seat
- Optional SFX Sound System
- Optional 110 Volt (12A) Power Configuration



ARROYO *series*

# *the* TULSA

SEATING FOR 5 | 18 JETS

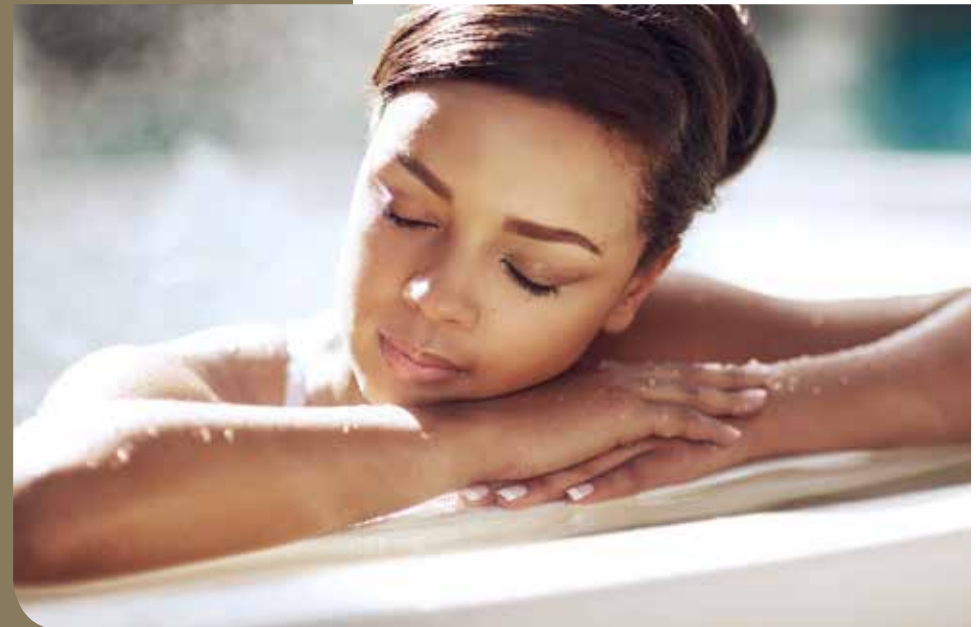
The Tulsa has room for 5, with a nice open plan and a variety of upright seating. Simple comfort and relaxation in a small footprint is what the Tulsa is all about.



DIMENSIONS	83" x 71" x 31" ( 211cm x 180cm x 79cm )
WATER CAPACITY	250 gallons / 946 litres
JETS /PUMPS	18 jets 1 pump (2HP 120V)
SEATING	Up to 5 people

## FEATURES & OPTIONS

- Ozone Purification System ready
- 12 volt Underwater Light
- ABS Sheet Moisture Barrier
- Optional 110 Volt (12A) Power Configuration



# *the* YUMA

## SEATING FOR 3 | 20 JETS

The Yuma has room for 3, with a nice lounge seat and 2 upright seats. It is perfect for small decks, condo owners or those who just want a reliable and simple way to get in hot water.



DIMENSIONS	86" x 62" x 31" (218cm x 157cm x 79 cm)
WATER CAPACITY	230 gallons / 871 litres
JETS /PUMPS	20 jets 1 pump (2HP 120V)
SEATING	Up to 3 people

## FEATURES & OPTIONS

- Ozone Purification System ready
- 12 volt Underwater Light
- ABS Sheet Moisture Barrier
- Optional 110 Volt (12A) Power Configuration



ARROYO *series*



## ACRYLIC COLORS

All models can be ordered in one of three different acrylic shell colors to suit your personal style.

*\*The Yuma and Tulsa are available in Silver White Marble only.*



Silver White  
Marble

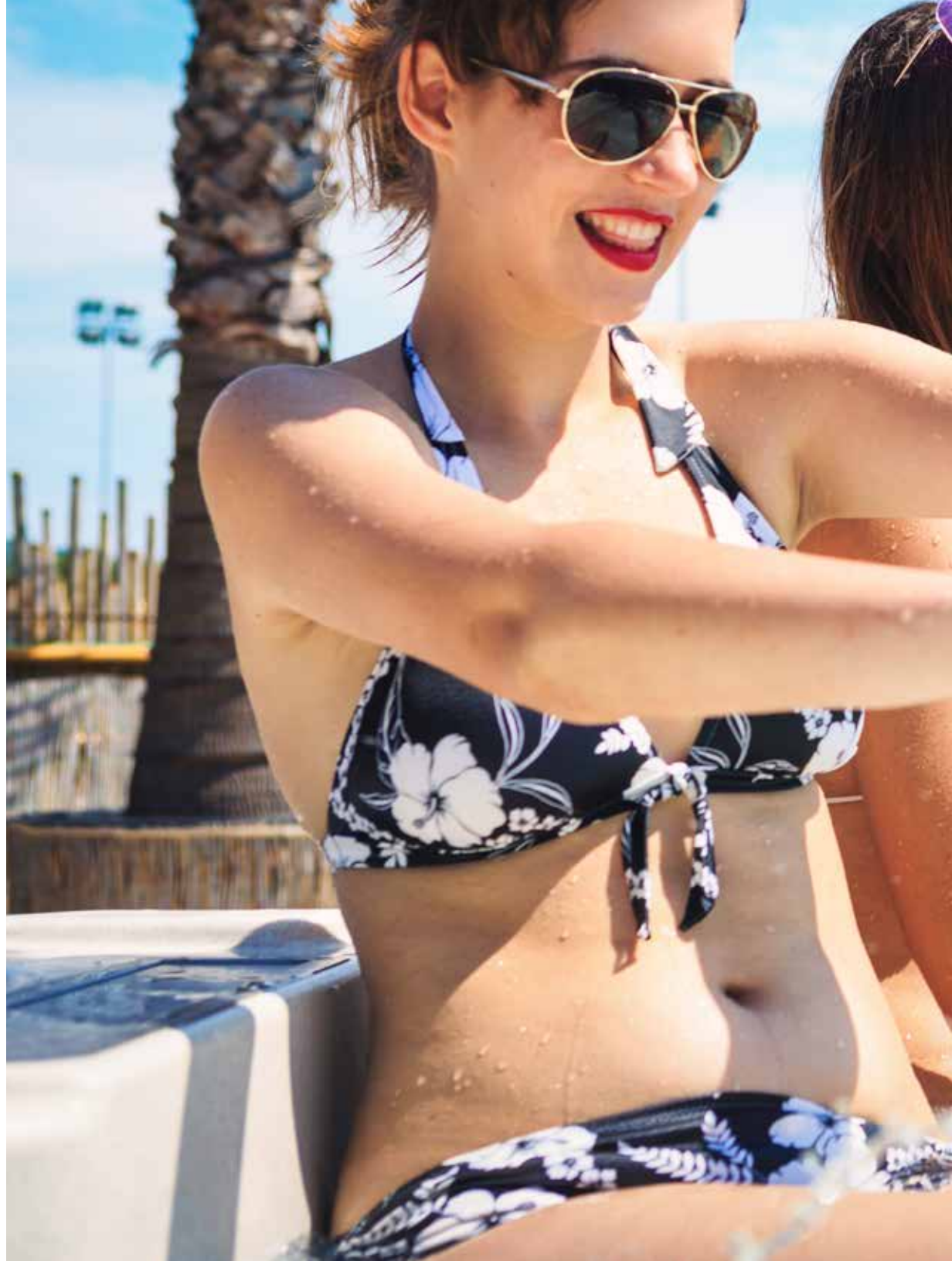


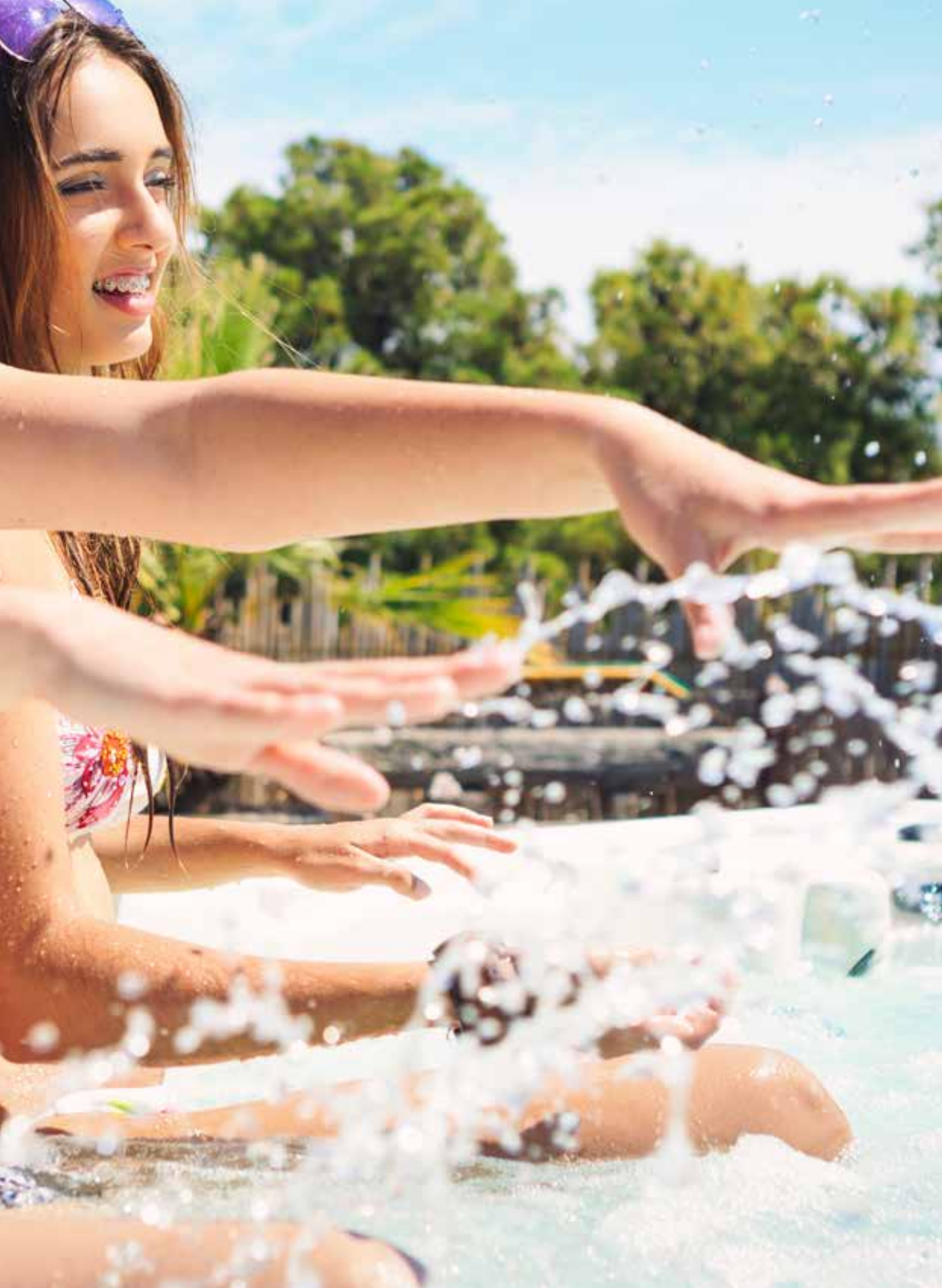
Sahara



Nickel

## COVER COLORS





## CABINET COLORS

### TERRACE SERIES



Stone



Coastal Grey



Desert



Graphite



Ash



Purple Rain



Navajo



Redwood

### ARROYO & OTERO SERIES



Coastal Grey



Redwood



Graphite Grey



Purple Rain



## TERRACE *series*



## OTERO *series*

	MESA	TUCSON	DURANGO	MARICOPA	LAREDO
Seating	2	6	7	6	7
Dimensions	86" x 46" 218.44cm x 116.84cm	88" x 93" 223 cm x 236 cm	88" x 93" 223 cm x 236 cm	80.5" x 80.5" 204 cm x 204 cm	80.5" x 80.5" 204 cm x 204 cm
Water Capacity	163 Gallons 617 Litres	375 Gallons 1420 Litres	375 Gallons 1420 Litres	362 Gallons 1370 Litres	400 Gallons 1515 Litres
Weight	400 Lbs 181 Kg	1000 Lbs 454 Kg	1000 Lbs 454 Kg	800 Lbs 363 Kg	800 Lbs 363 Kg
Shell Color Options	3	3	3	3	3
Cabinet Color Options	8	8	8	4	4
Jets	12	51	51	75	75
Ozone Water Treatment	✓	✓	✓	✓	✓
LED Lighting	✓	✓	✓	✓	✓
110 V Option	✓	—	—	—	—
Optional Cover Upgrade	—	✓	✓	—	—
SFX Stereo	—	✓	✓	Optional	Optional



## ARROYO *series*



	HAVASU	OUTLAW	TEMPE	AMARILLO	TULSA	YUMA
Seating	3	6	6	6	5	3
Dimensions	79" x 79" 201 cm x 201 cm	87" Round 221 cm	80.75" x 80.75" 205 cm x 205 cm	80.75" x 80.75" 205 cm x 205 cm	83" x 71" 211 cm x 180 cm	86" x 62" 218 cm x 157 cm
Water Capacity	200 Gallons 757 Litres	400 Gallons 1514 Litres	341 Gallons 1291 Litres	300 Gallons 1136 Litres	250 Gallons 946 Litres	230 Gallons 871 Litres
Weight	600 Lbs 272 Kg	700 Lbs 318 Kg	700 Lbs 318 Kg	700 Lbs 318 Kg	600 Lbs 272 Kg	500 Lbs 223 Kg
Shell Color Options	3	3	3	3	Sterling Silver (Platinum)	Sterling Silver (Platinum)
Cabinet Color Options	4	4	4	4	4	4
Jets	25	14	30	30	18	20
Ozone Water Treatment	Ready	Ready	Ready	Ready	Ready	Ready
LED Lighting	—	✓	—	—	—	—
110 V Option	✓	✓	✓	✓	✓	✓
Optional Cover Upgrade	—	—	—	—	—	—
SFX Stereo	Optional	Optional	Optional	Optional	—	—



# COYOTE SPAS WORLDWIDE DEALER NETWORK



## WARRANTY

Spa Shell	7 years
Equipment & Plumbing	3 year parts and 1 year labour
Other Components	3 years
Shell Surface	3 years
Arroyo, Otero Series Cover	1 year
Terrace Series Cover	3 years
Stereo	1 year





**COYOTE SPAS®**



*AUTHORIZED COYOTE SPAS DEALER*



Coyote Spas may make product modifications and enhancements without notice. Specifications and dimensions are approximate and for reference only.

Printed in Canada

#17950